

FRESNO, CALIFORNIA

HI-TACAN RWY 11L

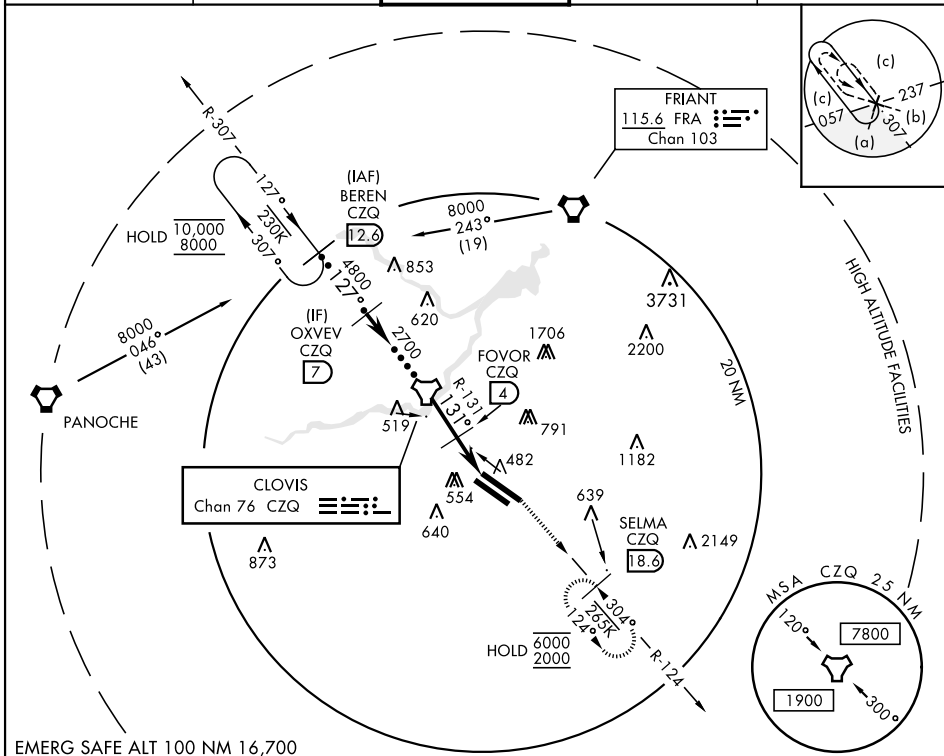
TACAN CZQ Chan 76	APCH CRS 131°	Rwy Idg TDZE Arprt Elev	11L 9279 11L 336 336	11R 8008 11R 333 333
-----------------------------	-------------------------	-------------------------------	---	---

AL-162 [USAF] FRESNO YOSEMITE INTL (KFAT)

DME required.

MISSED APPROACH: Climbing left turn to 2000 on CZQ TACAN R-124 to SELMA / 18.6 DME and hold.

ATIS 121.35 273.6	APP CON 119.6 351.95	TOWER 118.2 251.1	GND CON 121.7 348.6	CLNC DEL 124.35 348.6
-----------------------------	--------------------------------	-----------------------------	-------------------------------	---------------------------------



SW-2, 07 SEP 2023 to 05 OCT 2023

SW-2, 07 SEP 2023 to 05 OCT 2023

EMERG SAFE ALT 100 NM 16,700

BEREN CZQ R-307 12.3	OXVEV 7	TACAN	FOVOR 4	SELMA CZQ 18.6	ELEV 336	TDZE 11L 336 TDZE 11R 333
VGSi and descent angles not coincident (VGSi Angle 3.00/TCH 50)				2000 CZQ R-124	131° 7.3 NM from FAF	Rwy 11L Idg 9279' Rwy 29R Idg 9227'
10,000 8000				362	371	
4800				371		
2700				363		
1420				391		
3.00° TCH 55				404		
CATEGORY	C	D	E	TWR 445		
S-11L	800-1½	464	(500-1½)	MRL Rwy 11L-29L		
SIDESTEP 11R	800-1½ 467 (500-1½)	800-2	467 (500-2)	TDZL/CL Rwy 29R		
CIRCLING	920-1½ 584 (600-1½)	920-2 584 (600-2)	1140-2¾ 804 (900-2¾)			

FRESNO, CALIFORNIA

36° 47' N - 119° 43' W

FRESNO YOSEMITE INTL (KFAT)

Amdt 2A 10OCT19

HI-TACAN RWY 11L