

WAAS CH 48820 W35A	APP CRS 352°	Rwy Idg TDZE Apt Elev	6002 917 930
--	------------------------	-----------------------------	---

RNAV (GPS) RWY 35R

SOUTH TEXAS RGNL AT HONDO (HDO)

RNP APCH.

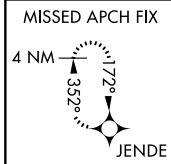
Baro-VNAV NA when using Castroville altimeter setting. For uncompensated Baro-VNAV systems, LNAV/VNAV NA below -16°C (4°F) or above 47°C (116°F). Visibility reduction by helicopters NA. When local altimeter setting not received, use Castroville altimeter setting and increase all DA 62 feet and all MDA 80 feet, increase LNAV/VNAV all Cats, and LNAV and Circling Cats C and D visibility ¼ mile. Circling Rwy 8, 13, 17R, 26, 31, 35L NA at night.

MISSED APPROACH:
Climb to 3700 direct
JENDE and hold.

ASOS
119.675

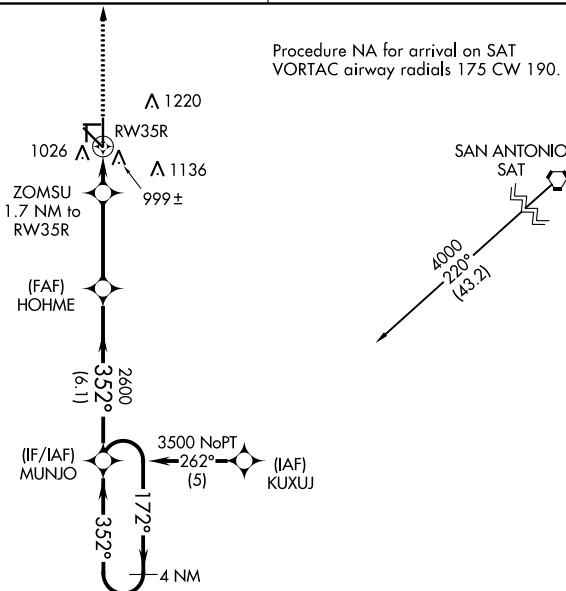
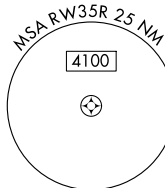
HOUSTON CENTER
134.95 269.4

UNICOM
122.725 (CTAF)



△ 1448

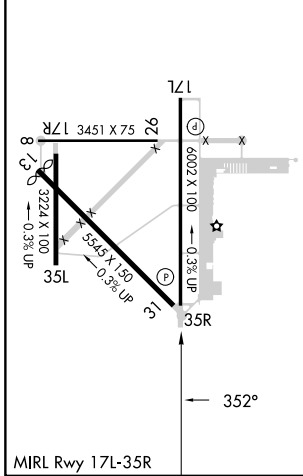
Procedure NA for arrival on SAT
VORTAC airway radials 175 CW 190.



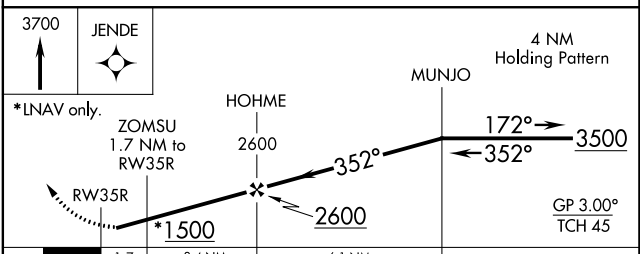
SC-3, 07 SEP 2023 to 05 OCT 2023

SC-3, 07 SEP 2023 to 05 OCT 2023

ELEV 930	TDZE 917
----------	----------



HONDO, TEXAS
Orig-B 15JUL21



CATEGORY	A	B	C	D
LPV DA	1170-1		253 (300-1)	
LNAV/VNAV DA	1293-1¼		376 (400-1¼)	
LNAV MDA	1360-1	443 (500-1)	1360-1¼ 443 (500-1¼)	1360-1½ 443 (500-1½)
CIRCLING	1440-1 510 (600-1)	1520-1 590 (600-1)	1580-1¾ 650 (700-1¾)	1580-2 650 (700-2)

29°22'N-99°11'W SOUTH TEXAS RGNL AT HONDO (HDO)
RNAV (GPS) RWY 35R