

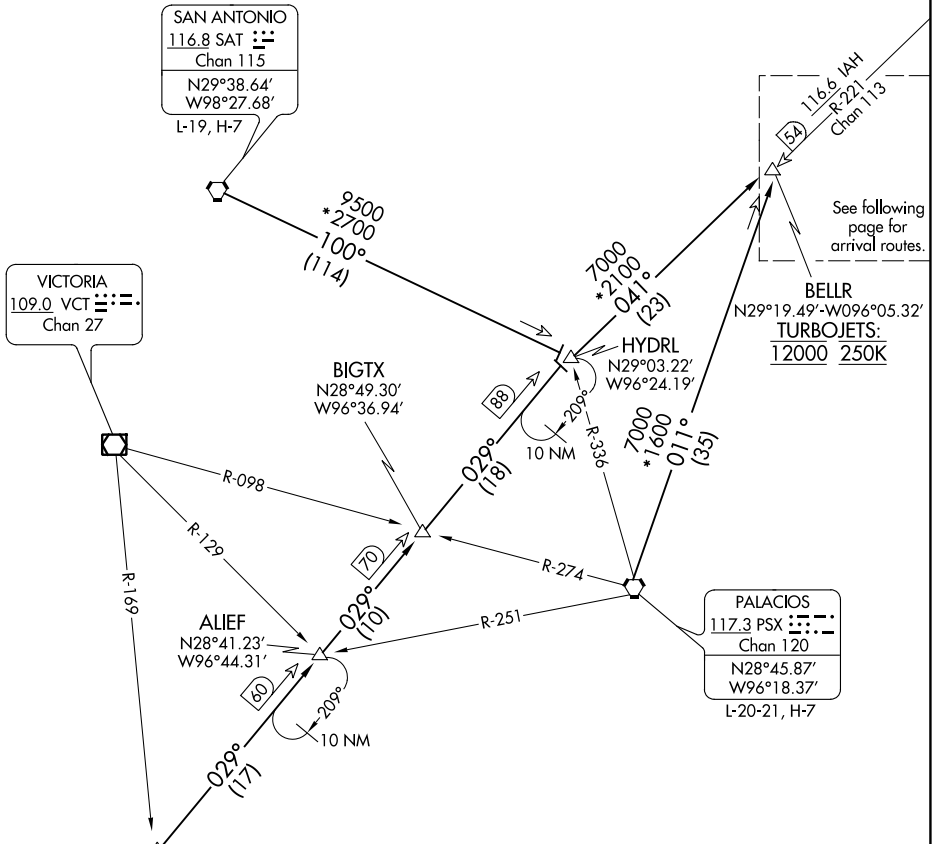
TSHRT TWO ARRIVAL

Transition Routes

HOUSTON, TEXAS

HOUSTON APP CON
 119.175 291.675
 EFD ATIS
 135.575 269.9
 HOU D-ATIS
 124.6
 SGR ATIS *
 118.125
 TME ATIS
 119.525

NOTE: RADAR required.
 NOTE: DME/DME/IRU or GPS equipped turbojet and turboprop aircraft landing HOU must file the BELLR (RNAV) STAR.
 NOTE: DME required.
 NOTE: DME required for holding at HYDRL.



See following page for arrival routes.

NOTE: Chart not to scale. (CONTINUED ON FOLLOWING PAGE)

CORPUS CHRISTI TRANSITION (CRP.TSHRT2): From over CRP VORTAC on CRP R-029 to HYDRL, then on IAH R-221 to BELLR. Thence

PALACIOS TRANSITION (PSX.TSHRT2): From over PSX VORTAC on PSX R-011 to BELLR. Thence

SAN ANTONIO TRANSITION (SAT.TSHRT2): From over SAT VORTAC on SAT R-100 to HYDRL, then on IAH R-221 to BELLR. Thence

TSHRT TWO ARRIVAL

Transition Routes

HOUSTON, TEXAS

SC-5, 07 SEP 2023 to 05 OCT 2023

SC-5, 07 SEP 2023 to 05 OCT 2023