

WAAS CH 63031 W14A	APP CRS 141°	Rwy Idg 4008 TDZE 41 Apt Elev 41
--	------------------------	---

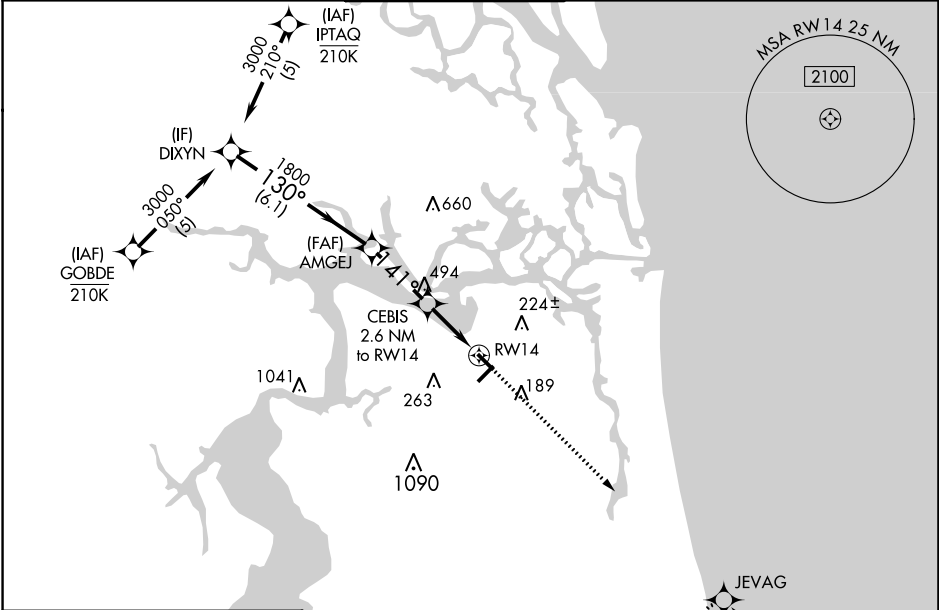
RNAV (GPS) RWY 14

JACKSONVILLE EXEC AT CRAIG (CRG)

⚠ Procedure NA at night. Baro-VNAV NA when using Jacksonville Intl altimeter setting. For uncompensated Baro-VNAV systems, LNAV/VNAV NA below -3°C (27°F) or above 54°C (130°F).
⚠ DME/DME RNP-0.3 NA. Helicopter visibility reduction below 1 SM NA. When local altimeter setting not received, use Jacksonville Intl altimeter setting; increase LPV DA to 325 feet; increase LNAV/VNAV DA to 450 feet and all visibilities ½ SM; increase all MDAs 40 feet and Circling visibility Cat C ¼ SM.

MISSED APPROACH:
Climb to 1900 direct JEVAG and hold.

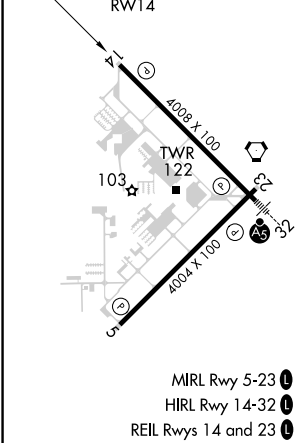
ATIS 125.4	JACKSONVILLE APP CON 124.9 308.4	CRAIG TOWER ★ 132.1 (CTAF) 269.525	GND CON 121.8	CLNC DEL 118.35	UNICOM 122.95
----------------------	--	--	-------------------------	---------------------------	-------------------------



SE-3, 07 SEP 2023 to 05 OCT 2023

SE-3, 07 SEP 2023 to 05 OCT 2023

ELEV	41	TDZE	41
------	----	------	----



RADAR REQUIRED

1900	JEVAG
↑	✦
*LNAV only.	
GP 3.00°	TCH 44
3000	130°
1800	141°
900	
6.1 NM	2.8 NM
2.6 NM	
CEBIS 2.6 NM to RW14	
RW14	
141° to RW14	
4008 X 100	
4004 X 100	
TWR 122	
TWX 122	
103	
MIRL Rwy 5-23	Ⓛ
HIRL Rwy 14-32	Ⓛ
REIL Rwy 14 and 23	Ⓛ

CATEGORY	A	B	C	D
LPV DA		293-1	252 (300-1)	
LNAV/VNAV DA		418-1¼	377 (400-1¼)	
LNAV MDA	500-1	459 (500-1)	500-1⅓	459 (500-1⅓)
CIRCLING	500-1 459 (500-1)	600-1 559 (600-1)	620-1½ 579 (600-1½)	800-2½ 759 (800-2½)