

VORTAC CRG <b>114.5</b> Chan <b>92</b>	APP CRS <b>132°</b>	Rwy ldg TDZE <b>41</b> Apt Elev <b>41</b>	<b>4008</b>
--	------------------------	---	-------------

# VOR RWY 14

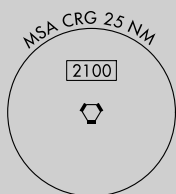
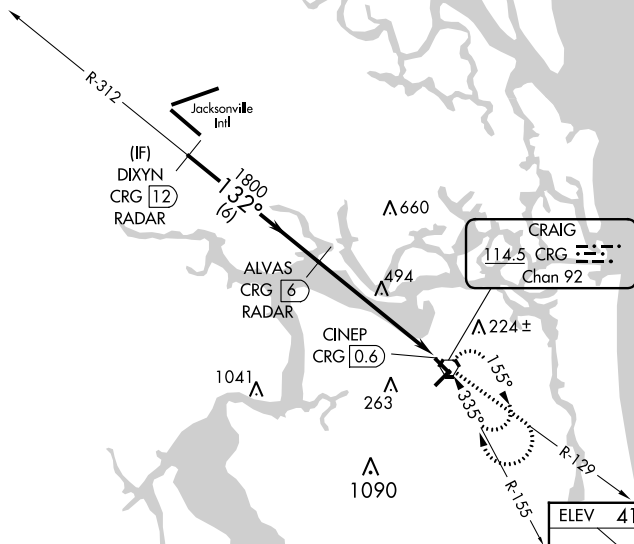
JACKSONVILLE EXEC AT CRAIG (CRG)

▼ Procedure NA at night.  
 ▲ DME or Radar required.  
 Helicopter visibility reduction below 1 SM NA.

MISSED APPROACH: Climb to 2100 via CRG VORTAC R-129 then right turn direct CRG VORTAC and hold.

ATIS <b>125.4</b>	JACKSONVILLE APP CON <b>124.9 308.4</b>	<b>CRAIG TOWER ★</b> 132.1 (CTAF) <b>269.525</b>	GND CON <b>121.8</b>	CLNC DEL <b>118.35</b>	UNICOM <b>122.95</b>
----------------------	--	---	-------------------------	---------------------------	-------------------------

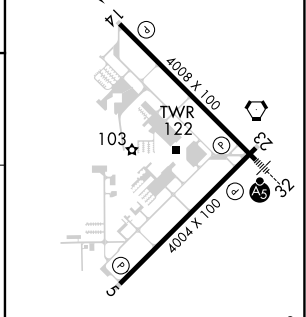
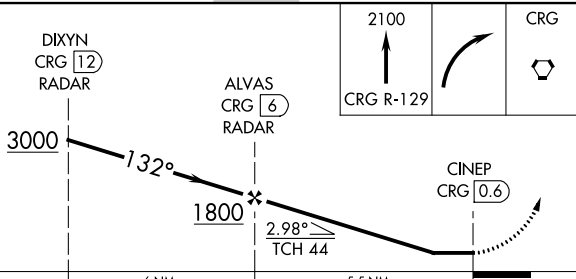
## RADAR REQUIRED



SE-3, 07 SEP 2023 to 05 OCT 2023

SE-3, 07 SEP 2023 to 05 OCT 2023

ELEV <b>41</b>	TDZE <b>41</b>
132° 5.5 NM from FAF	



MIRL Rwy 5-23  
 HIRL Rwy 14-32  
 REIL Rws 14 and 23

CATEGORY	A	B	C	D
S-14	800-1 759 (800-1)	800-1¼ 759 (800-1¼)	800-2½	759 (800-2½)
CIRCLING	800-1 759 (800-1)	800-1¼ 759 (800-1¼)	800-2½	759 (800-2½)

FAF to MAP 5.5 NM					
Knots	60	90	120	150	180
Min:Sec	5:30	3:40	2:45	2:12	1:50