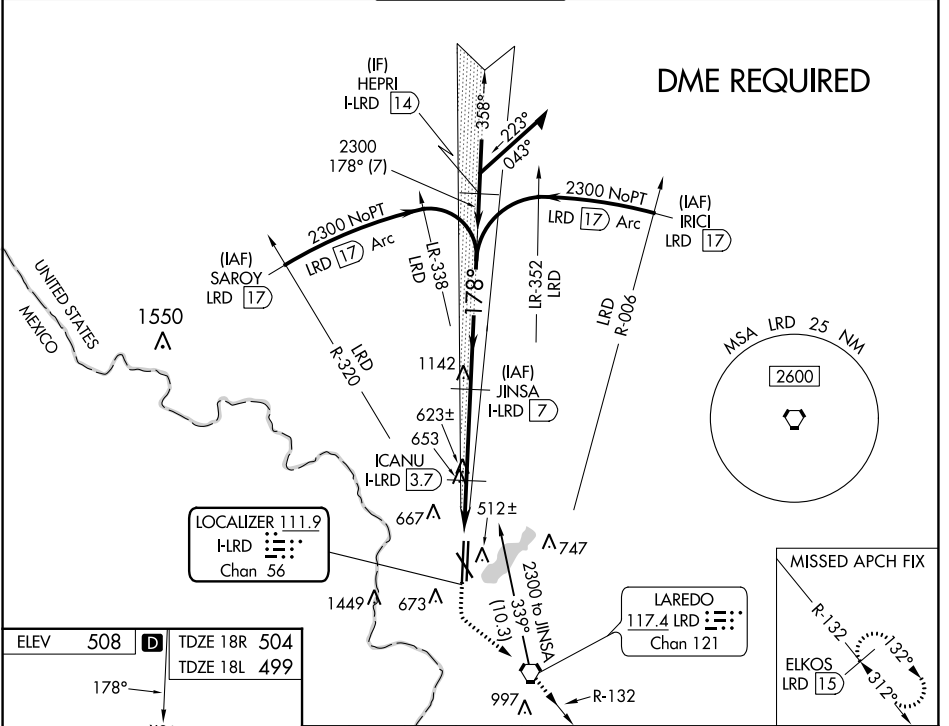


LOC/DME I-LRD <b>111.9</b> Chan 56	APP CRS <b>178°</b>	Rwy Idg <b>8743 8236</b>	18R <b>504 499</b>	18L <b>508 508</b>
TDZE		Apt Elev		

# ILS or LOC RWY 18R

LAREDO INTL (L.R.D)

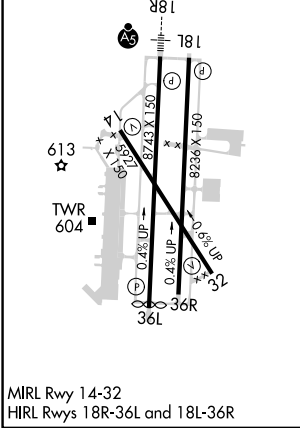
<p>Circling NA west of rwys 14 and 36L. DME required. For inop ALS, increase S-ILS 18R Cat E visibility to 3/4 SM and increase S-LOC 18R Cat C/D/E visibility to 1 1/2 SM.</p>	<p>MALS R</p>	<p>MISSED APPROACH: Climb to 1100 then climbing left turn to 2500 direct LRD VORTAC and on LRD VORTAC R-132 to ELKOS/LRD 15 DME and hold.</p>		
		<p>ATIS <b>125.775</b></p>	<p>HOUSTON CENTER <b>127.8 307.2</b></p>	<p>LAREDO TOWER ★ <b>120.1(CTAF) 0 257.9</b></p>



SC-3, 07 SEP 2023 to 05 OCT 2023

SC-3, 07 SEP 2023 to 05 OCT 2023

ELEV 508	<b>D</b>	TDZE 18R 504	TDZE 18L 499
----------	----------	--------------	--------------



MIRL Rwy 14-32  
HIRL Rwy 18R-36L and 18L-36R

1100 2500 LRD ELKOS LRD 15 VGSI and ILS glidepath not coincident (VGSI Angle 3.00/TCH 50).  
 Use I-LRD DME when on the localizer course.  
 \*LOC only

ICANU I-LRD 3.7

I-LRD 2.7

I-LRD 1.5

1.2 NM -1.1 NM -3.3 NM

2300 358° 2300 178° 2300

GS 3.00° TCH 57

Remain within 15 NM

CATEGORY	A	B	C	D	E
S-ILS 18R	704-1/2 200 (200-1/2)				
S-LOC 18R	920-1/2	416 (500-1/2)	920-3/4	416 (500-3/4)	
SIDESTEP 18L	920-1	421 (500-1)	920-1 1/2	920-2	421 (500-2)
<b>C</b> CIRCLING	940-1	980-1	1100-1 1/2	1200-2 1/4	1200-2 1/2
	432 (500-1)	472 (500-1)	592 (600-1 1/2)	692 (700-2 1/4)	692 (700-2 1/2)