

RNAV (GPS) RWY 2


LAS VEGAS MUNI (LVS)

APP CRS 022°	Rwy Idg 5006
	TDZE 6870
	Apt Elev 6877

RNP APCH-GPS.

▼ Inop table does not apply to Cat C. When local altimeter setting not received, use Santa Fe Rgnl altimeter setting and increase all MDAs 200 feet; increase LNAV Cat C visibility to 1 3/4 SM and Circling Cat C visibility to 2 1/4 SM.

ODALS

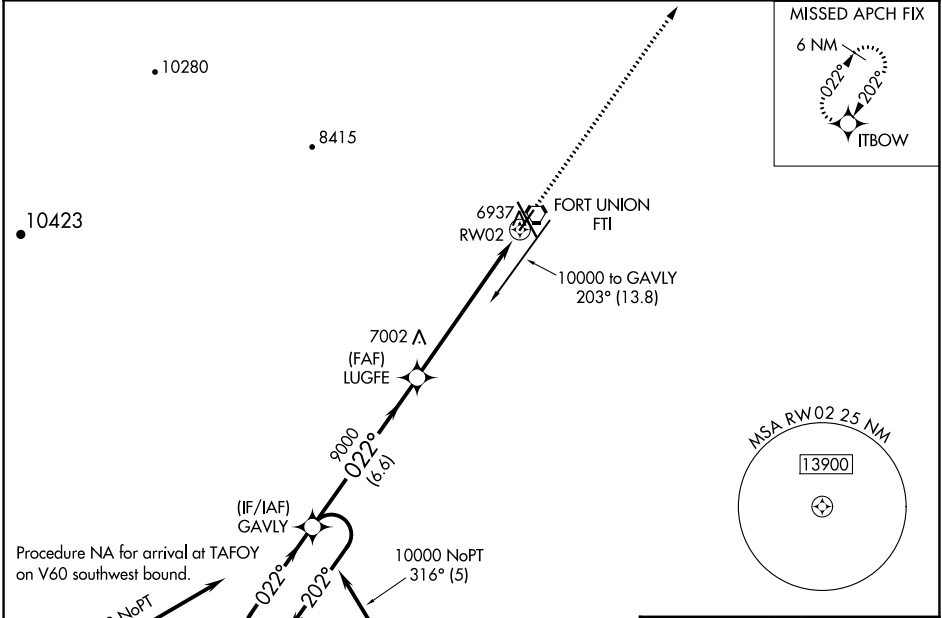


MISSED APPROACH: Climb to 10000 direct ITBOW and hold.

ASOS
118.525

ALBUQUERQUE CENTER
132.8 346.35

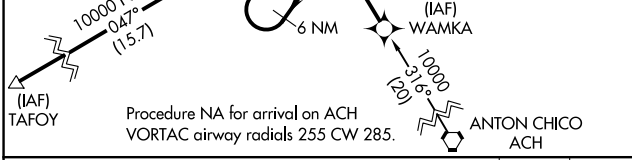
UNICOM
122.8 (CTAF) 0



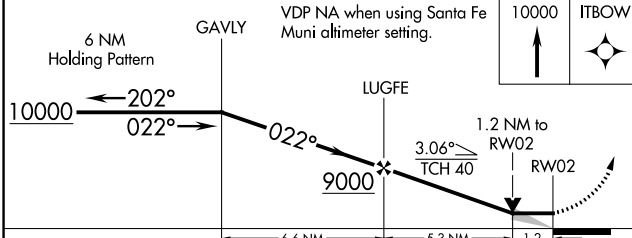
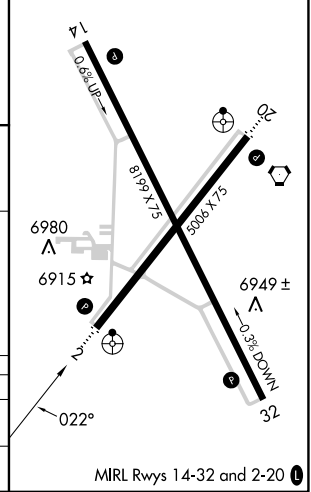
Procedure NA for arrival at TAFOY on V60 southwest bound.

10000 NoPT 316° (5)

Procedure NA for arrival on ACH VORTAC airway radials 255 CW 285.



ELEV 6877 | TDZE 6870



CATEGORY	A	B	C	D
LNAV MDA	7280-3/4	410 (500-3/4)	7280-1 1/4 410 (500-1 1/4)	NA
CIRCLING	7420-1	543 (600-1)	7420-1 1/2 543 (600-1 1/2)	NA

SW-1, 07 SEP 2023 to 05 OCT 2023

SW-1, 07 SEP 2023 to 05 OCT 2023