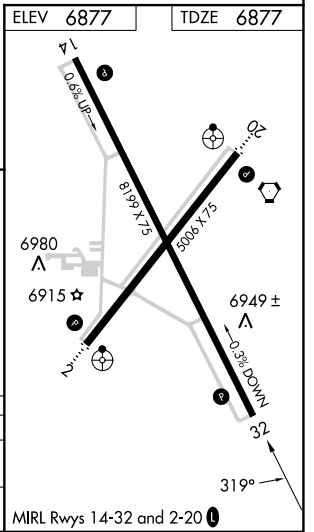
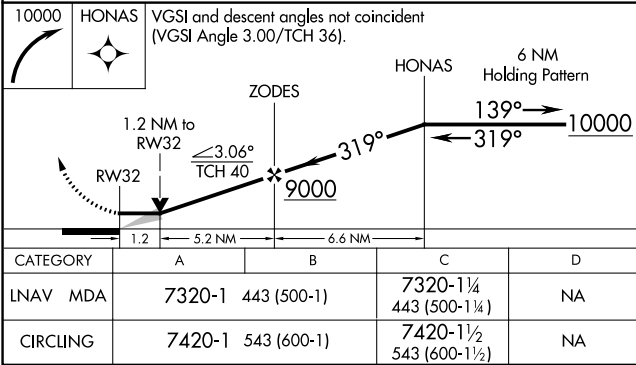
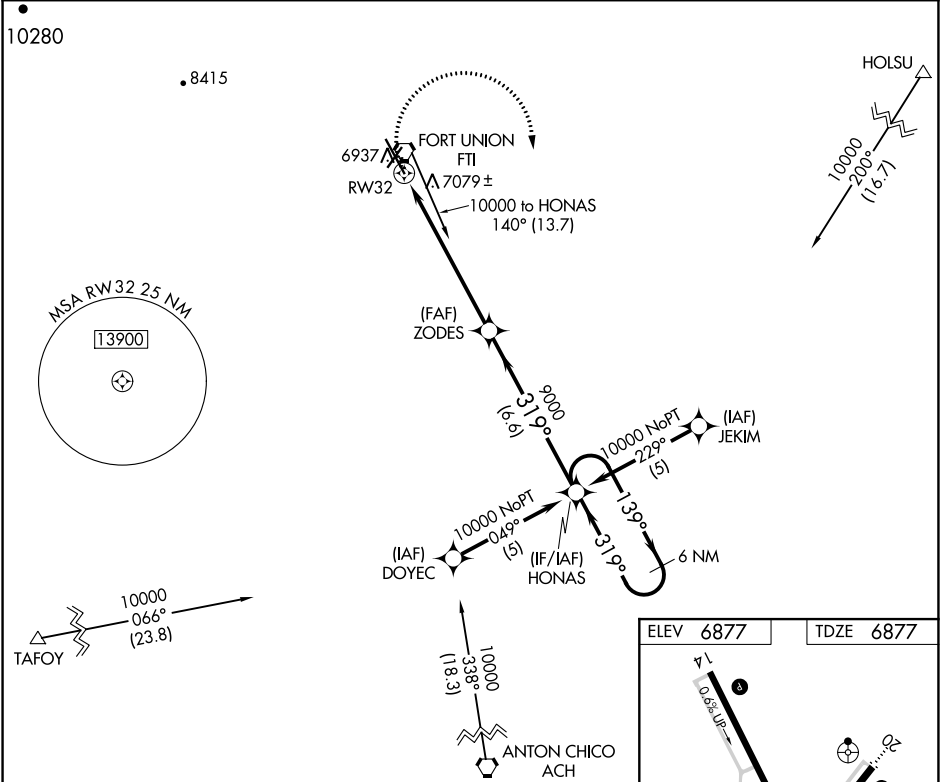


# RNAV (GPS) RWY 32

LAS VEGAS MUNI (LVS)

APP CRS <b>319°</b>	Rwy Idg TDZE Apt Elev	<b>8199</b> <b>6877</b> <b>6877</b>
------------------------	-----------------------------	---

RNP APCH-GPS.		MISSED APPROACH: Climbing right turn to 10000 direct HONAS and hold.
<p>▼ When local altimeter not received, used Santa Fe Rgnl altimeter setting and increase all MDA 200 feet; increase LNAV Cat C visibility to 1 7/8 SM and Circling Cat C visibility to 2 1/4 SM. VDP NA when using Santa Fe Muni altimeter setting.</p>		
ASOS <b>118.525</b>	ALBUQUERQUE CENTER <b>132.8 346.35</b>	UNICOM <b>122.8 (CTAF)</b>



SW-1, 07 SEP 2023 to 05 OCT 2023

SW-1, 07 SEP 2023 to 05 OCT 2023