

# KAYOH EIGHT ARRIVAL

AL-236 (FAA)

LONG BEACH, CALIFORNIA

Σ202 07 SEP 2023 to 05 OCT 2023

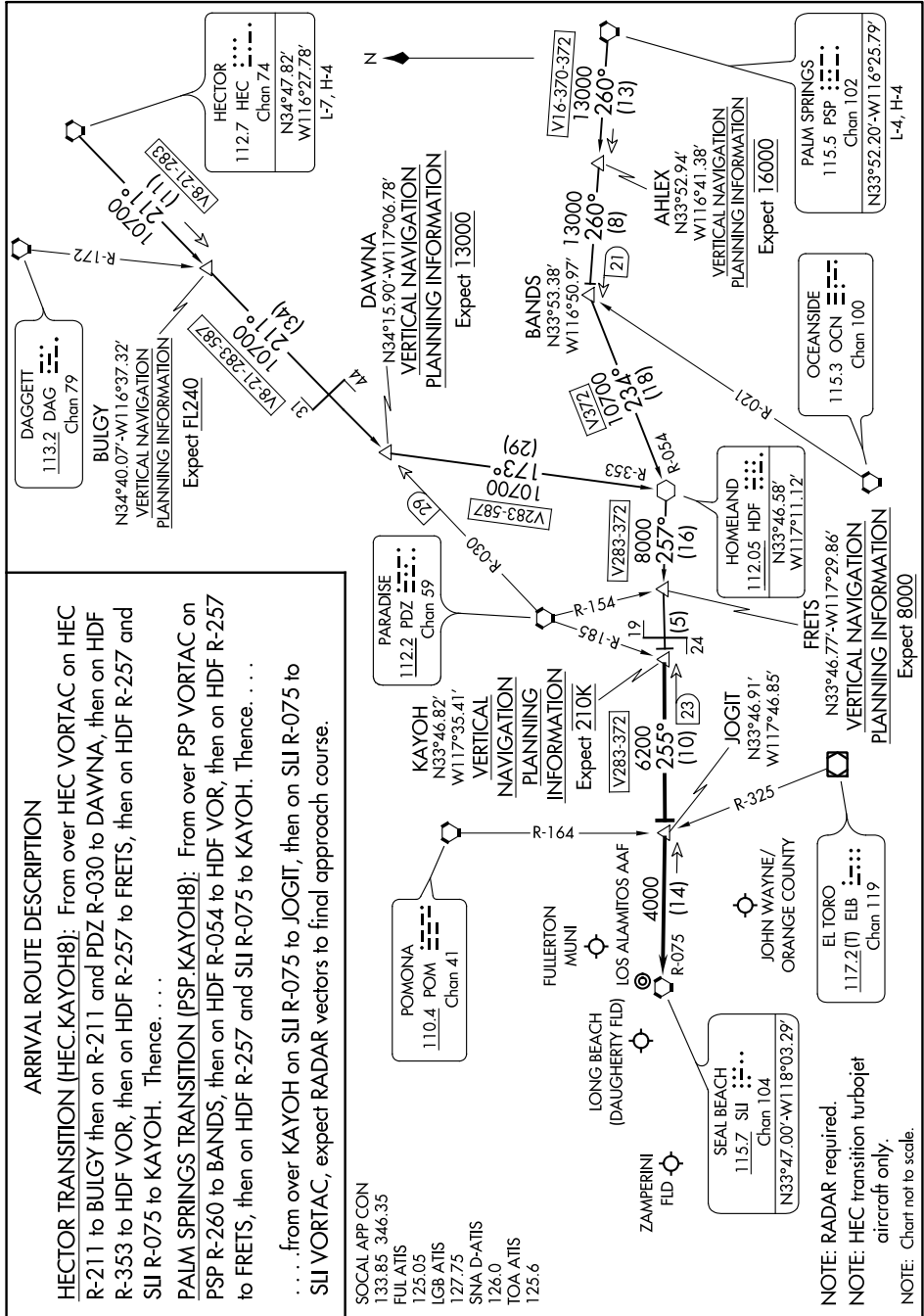
## ARRIVAL ROUTE DESCRIPTION

**HECTOR TRANSITION (HEC.KAYOH8):** From over HEC VORTAC on HEC R-211 to BULGY then on R-211 and PDZ R-030 to DAWNA, then on HDF R-257 to BULGY, then on HDF R-257 to FRETS, then on HDF R-257 and SUJ R-075 to KAYOH. Thence. . .

**PALM SPRINGS TRANSITION (PSP.KAYOH8):** From over PSP VORTAC on PSP R-260 to BANDS, then on HDF R-054 to HDF VOR, then on HDF R-257 to FRETS, then on HDF R-257 and SUJ R-075 to KAYOH. Thence. . .

. . . from over KAYOH on SUJ R-075 to JOGIT, then on SUJ R-075 to SUJ VORTAC, expect RADAR vectors to final approach course.

- SOCAL APP CON 133.85 346.35
- FUL ATIS 125.05
- LGB ATIS 127.75
- SNA D-ATIS 126.0
- TOA ATIS 125.6



NOTE: RADAR required.  
 NOTE: HEC transition turbojet aircraft only.  
 NOTE: Chart not to scale.

# KAYOH EIGHT ARRIVAL

LONG BEACH, CALIFORNIA

SW-3, 07 SEP 2023 to 05 OCT 2023