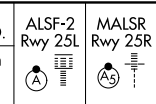


LOC/DME I-LAX 109.9 Chan 36	APP CRS 251°	Rwy ldg 11095	25L 11134	25R 104	25R 104
DME or RADAR required. RNP APCH - GPS. From CLPUR or CRCUS or SEAVU or TRNDO.		Apt Elev 128			

ILS or LOC RWY 25L

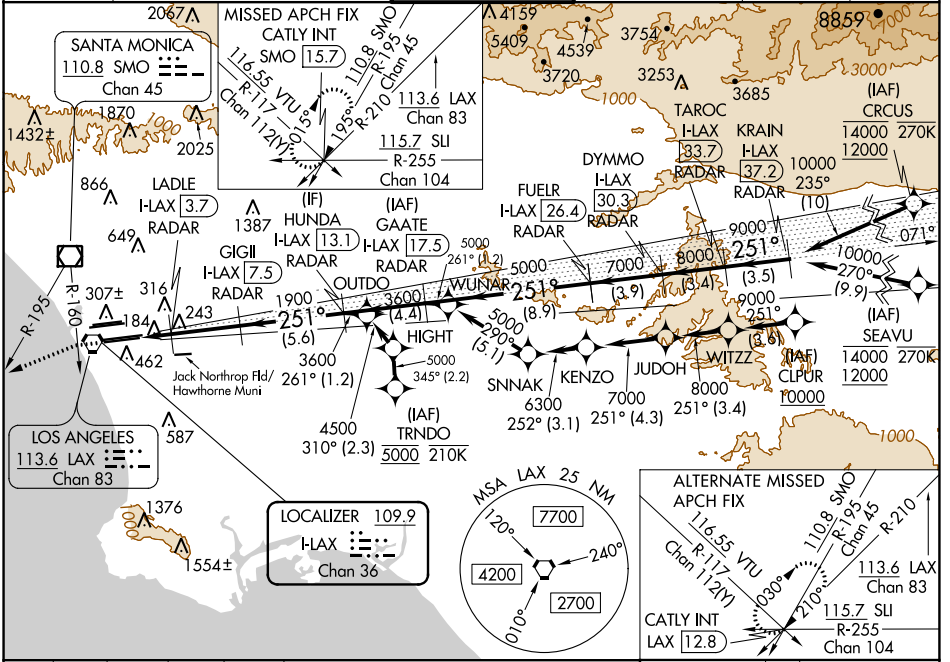
LOS ANGELES INTL (LAX)

Simultaneous approach authorized. Simultaneous approach authorized with HHR.



MISSED APPROACH: Climb to 2000 on heading 251° until crossing the SMO R-160, then left turn on heading 236° and on the SMO R-195 to CATLY INT/ SMO 15.7 DME and hold.

D-ATIS ARR 133.8 DEP 135.65	SOCL APP CON 124.3 363.2 (APCH FM WEST) 124.5 235.975 (225°-044°)	124.9 269.0 (090°-224°) 128.5 360.7 (045°-089°)	LOS ANGELES TOWER N 133.9 239.3 S 120.95 379.1	GND CON N 121.65 327.0 S 121.75 327.0 W 121.4 327.0	CLNC DEL 120.35 327.0	CPDLC
---	---	--	--	---	---	-------



SW-3, 07 SEP 2023 to 05 OCT 2023

SW-3, 07 SEP 2023 to 05 OCT 2023

2000 hdg 251°	SMO R-160	SMO R-195	CATLY INT	TAROC I-LAX 33.7	KRAIN I-LAX 37.2
	hdg 236°			RADAR	RADAR
				DYMMO I-LAX 30.3	
				RADAR	
				FUELR I-LAX 26.4	
				RADAR	
				GAATE I-LAX 17.5	
				RADAR	
				HUNDA I-LAX 13.1	
				RADAR	
				GIGII I-LAX 7.5	
				RADAR	
				LADLE I-LAX 3.7	
				RADAR	
				I-LAX 2	
				I-LAX 3	
				700	1900
				3600	5000
				7000	8000
				9000	10000
				GS 3.00°	TCH 54
				VGSi and ILS glidepath not coincident (VGSi Angle 3.00/TCH 70).	
				1 NM	0.8 3.8 NM 5.6 NM 4.4 NM 8.9 NM 3.9 NM 3.4 NM 3.5 NM
CATEGORY	A	B	C	D	
S-ILS 25L	304/18 200 (200-1/2)				
S-LOC 25L	480/24 376 (400-1/2)		480/35 376 (400-3/4)		
SIDESTEP 25R	480/55 376 (400-1)		480-1 1/2 376 (400-1 1/2)		

ELEV 128	D	TDZE 25L 104	TDZE 25R 104
TDZ/CL Rwy's 6R, 7L, 24R, and 25L HIRL all Rwy's			
FAF to MAP 5.5 NM			
Knots	60	90	120 150 180
Min:Sec	5:30	3:40	2:45 2:12 1:50