

LOC/DME I-DSZ <b>110.1</b>	APP CRS <b>185°</b>	Rwy Idg <b>8606</b>
Chan <b>38</b>	TDZE <b>864</b>	Apt Elev <b>887</b>

# ILS or LOC RWY 18

DANE COUNTY RGNL/TRUAX FLD (MSN)

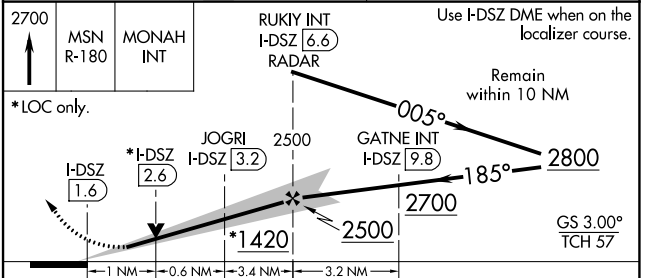
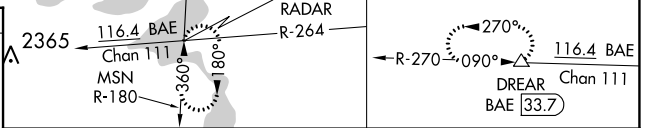
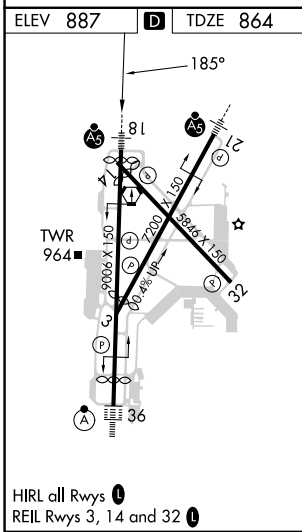
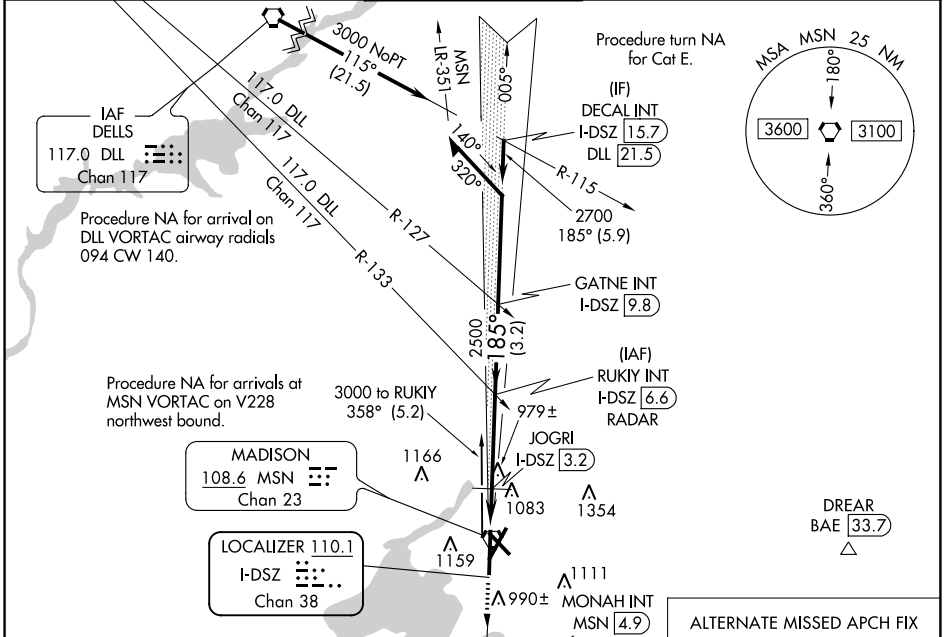
**DME required.**

For inop ALS, increase S-ILS 18 Cat E visibility to RVR 4000 and S-LOC 18 Cat C/D/E visibility to RVR 5500.  
 \*\*RVR 1800 authorized with use of FD or AP or HUD to DA.

MALSR

MISSED APPROACH: Climb to 2700 on MSN VORTAC R-180 to MONAH INT/ MSN VORTAC 4.9 DME/RADAR and hold.

ATIS <b>124.65 278.3</b>	MADISON APP CON * <b>135.45 343.7</b>	MADISON TOWER * <b>119.3 (CTAF) 0 257.8</b>	GND CON <b>121.9 348.6</b>	CLNC DEL <b>121.625</b>	UNICOM <b>122.95</b>
-----------------------------	--	--	-------------------------------	----------------------------	-------------------------



CATEGORY	A	B	C	D	E
S-ILS 18 **	1064/24 200 (200-1/2)				
S-LOC 18	1240/24	376 (400-1/2)	1240/35	376 (400-5/8)	
CIRCLING	1420-1 533 (600-1)	1460-1 573 (600-1)	1460-1 1/2 573 (600-1 1/2)	1700-2 3/4 813 (900-2 3/4)	1700-3 813 (900-3)

EC-3, 07 SEP 2023 to 05 OCT 2023

EC-3, 07 SEP 2023 to 05 OCT 2023