

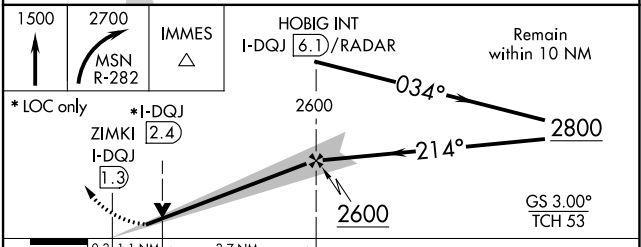
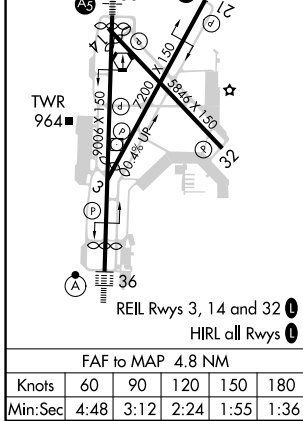
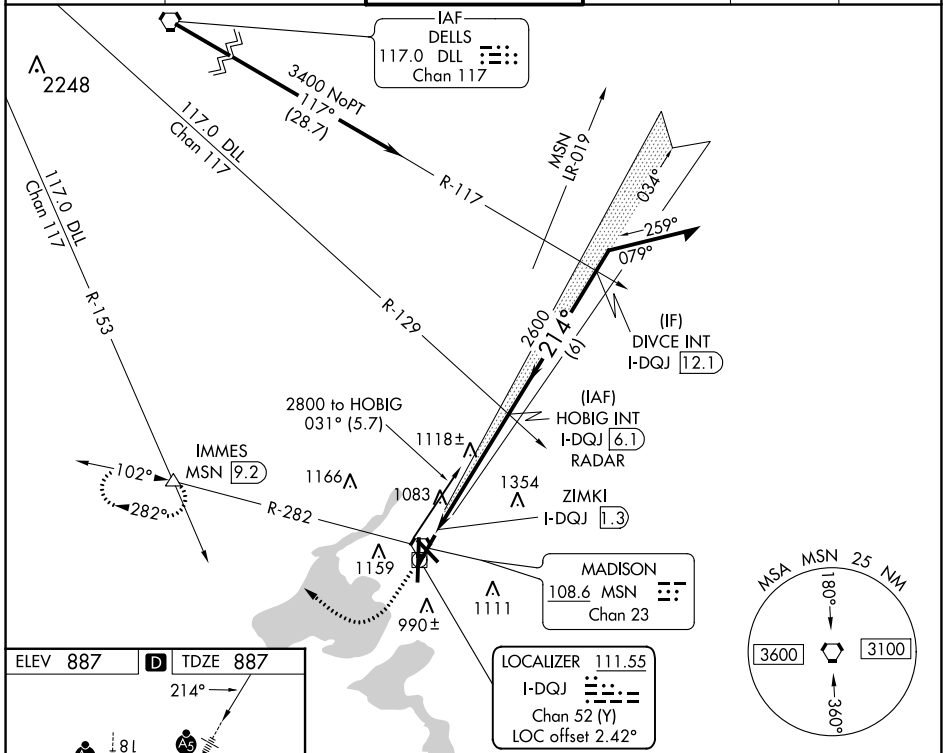
LOC/DME I-DQJ 111.55 Chan 52 (Y)	APP CRS 214°	Rwy Idg TDZE Apt Elev	7015 887 887
---	------------------------	-----------------------------	---

ILS or LOC RWY 21

DANE COUNTY RGNL/TRUAX FLD (MSN)

For inop MALSR, increase S-LOC 21 Cat C/D visibility to 1/8 mile.	MALSR	MISSED APPROACH: Climb to 1500 then climbing right turn to 2700 on MSN VORTAC R-282 to IMMES INT/MSN 9.2 DME and hold.			

ATIS 124.65 278.3	MADISON APP CON * 135.45 343.7	MADISON TOWER * 119.3 (CTAF) 0 257.8	GND CON 121.9 348.6	CLNC DEL 121.625	UNICOM 122.95
-----------------------------	--	---	-------------------------------	----------------------------	-------------------------



CATEGORY	A	B	C	D
S-ILS 21	1137-1/2 250 (300-1/2)			
S-LOC 21	1380-1/2	493 (500-1/2)	1380-1	493 (500-1)
CIRCLING	1420-1 533 (600-1)	1460-1 573 (600-1)	1460-1 1/2 573 (600-1 1/2)	1700-2 3/4 813 (900-2 3/4)

EC-3, 07 SEP 2023 to 05 OCT 2023

EC-3, 07 SEP 2023 to 05 OCT 2023