

WAAS CH 42829 W21A	APP CRS 212°	Rwy Idg TDZE 887 Apt Elev 887	7015
--	------------------------	---	-------------

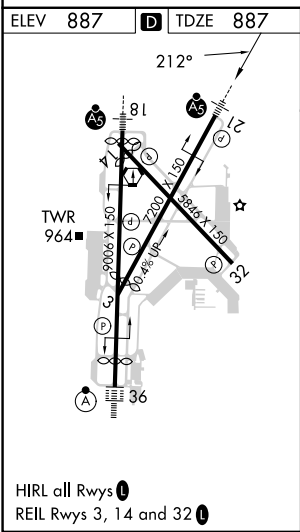
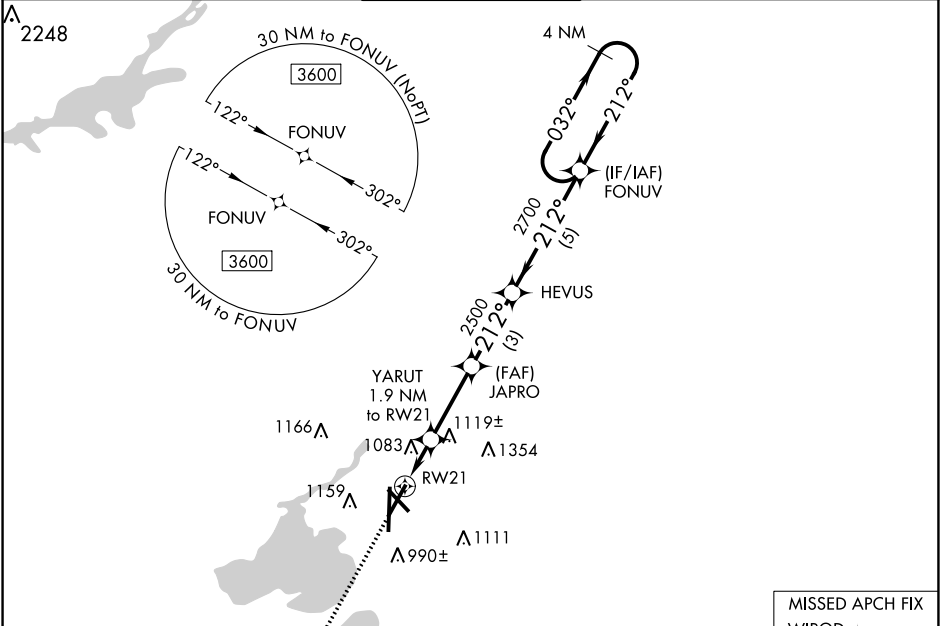
RNAV (GPS) RWY 21
DANE COUNTY RGNL/TRUAX FLD (MSN)

⚠ For uncompensated Baro-VNAV systems, LNAV/VNAV NA below -20°C (-4°F) or above 54°C (130°F). DME/DME RNP-0.3 NA. For inop MALSR, increase LNAV/VNAV all Cats visibility to 1¾ mile and LNAV Cat C/D visibility to 1½ mile.



MISSED APPROACH:
Climb to 3600 direct WIROD and hold.

ATIS 124.65 278.3	MADISON APP CON * 135.45 343.7	MADISON TOWER * 119.3 (CTAF) 0 257.8	GND CON 121.9 348.6	CLNC DEL 121.625	UNICOM 122.95
-----------------------------	--	--	-------------------------------	----------------------------	-------------------------



ELEV 887	D TDZE 887				
3600	WIROD * LNAV only	FONUV	4 NM Holding Pattern		
↑	YARUT 1.9 NM to RW21	JAPRO 2500	HEVUS	032° → 3600	
	* 1.4 NM to RW21	* 1540	2700	← 212°	
	1.4 NM	0.5	3 NM	5 NM	
GP 3.00°	TCH 53				
CATEGORY	A	B	C	D	
LPV DA	1087-½		200 (200-½)		
LNAV/VNAV DA	1412-1¾		525 (600-1¾)		
LNAV MDA	1380-½		1380-1		493 (500-1)
C CIRCLING	1420-1	1460-1	1460-1½	1700-2¾	
	533 (600-1)	573 (600-1)	573 (600-1½)	813 (900-2¾)	

EC-3, 07 SEP 2023 to 05 OCT 2023

EC-3, 07 SEP 2023 to 05 OCT 2023