

WAAS CH 58021 W32A	APP CRS 320°	Rwy Idg TDZE Apt Elev	5846 862 887
--	------------------------	-----------------------------	---

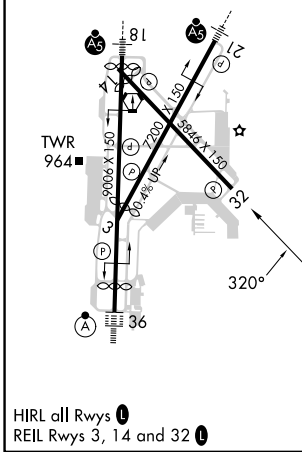
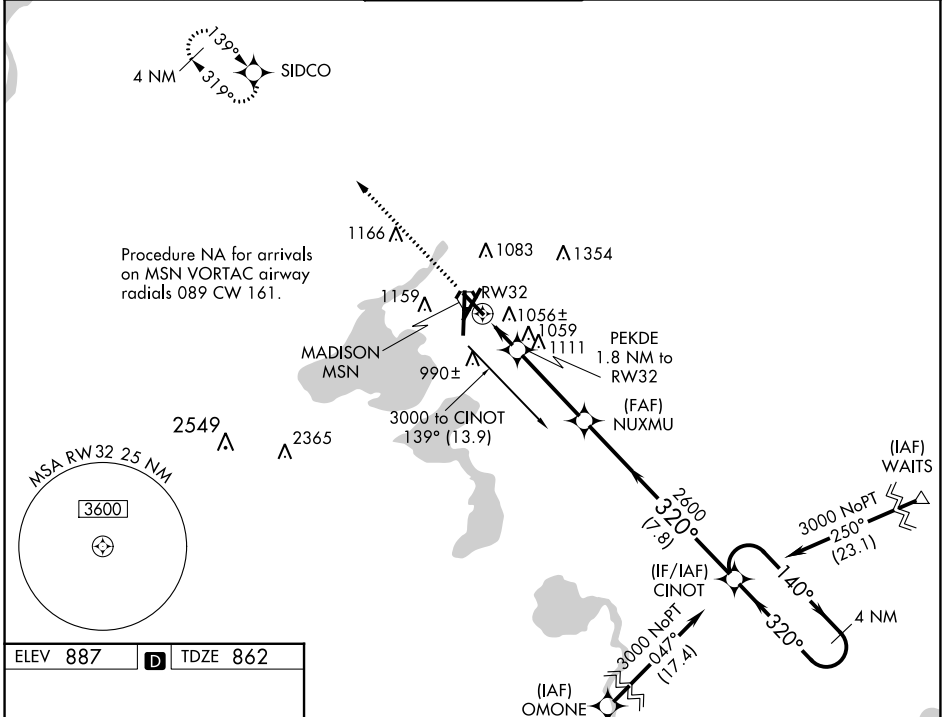
RNAV (GPS) RWY 32

DANE COUNTY RGNL/TRUAX FLD (MSN)

⚠ For uncompensated Baro-VNAV systems, LNAV/VNAV NA below -19°C (-2°F) or above 54°C (130°F). DME/DME RNP-0.3 NA. Helicopter visibility reduction below ¾ SM NA.

MISSED APPROACH: Climb to 3200 direct SIDCO and hold.

ATIS 124.65 278.3	MADISON APP CON * 135.45 343.7	MADISON TOWER * 119.3 (CTAF) 0 257.8	GND CON 121.9 348.6	CINC DEL 121.625	UNICOM 122.95
-----------------------------	--	--	-------------------------------	----------------------------	-------------------------



3200	SIDCO	NUXMU	CINOT	4 NM Holding Pattern
*LNAV only	PEKDE 1.8 NM to RW32	2600	2600	140° → 3000
	RW32	*1480	2600	← 320°
	1.8 NM	3.5 NM	7.8 NM	GP 3.00° TCH 56
CATEGORY	A	B	C	D
LPV DA	1232-1¼		370 (400-1¼)	
LNAV/VNAV DA	1237-1¼		375 (400-1¼)	
LNAV MDA	1360-1 498 (500-1)		1360-1¾ 498 (500-1¾)	
C CIRCLING	1420-1 533 (600-1)	1460-1 573 (600-1)	1460-1½ 573 (600-1½)	1700-2¾ 813 (900-2¾)

EC-3, 07 SEP 2023 to 05 OCT 2023

EC-3, 07 SEP 2023 to 05 OCT 2023