

WAAS CH <b>82721</b> <b>W36A</b>	APP CRS <b>005°</b>	Rwy Idg TDZE <b>862</b> Apt Elev <b>887</b>	<b>8005</b>
--	------------------------	---	-------------

# RNAV (GPS) RWY 36

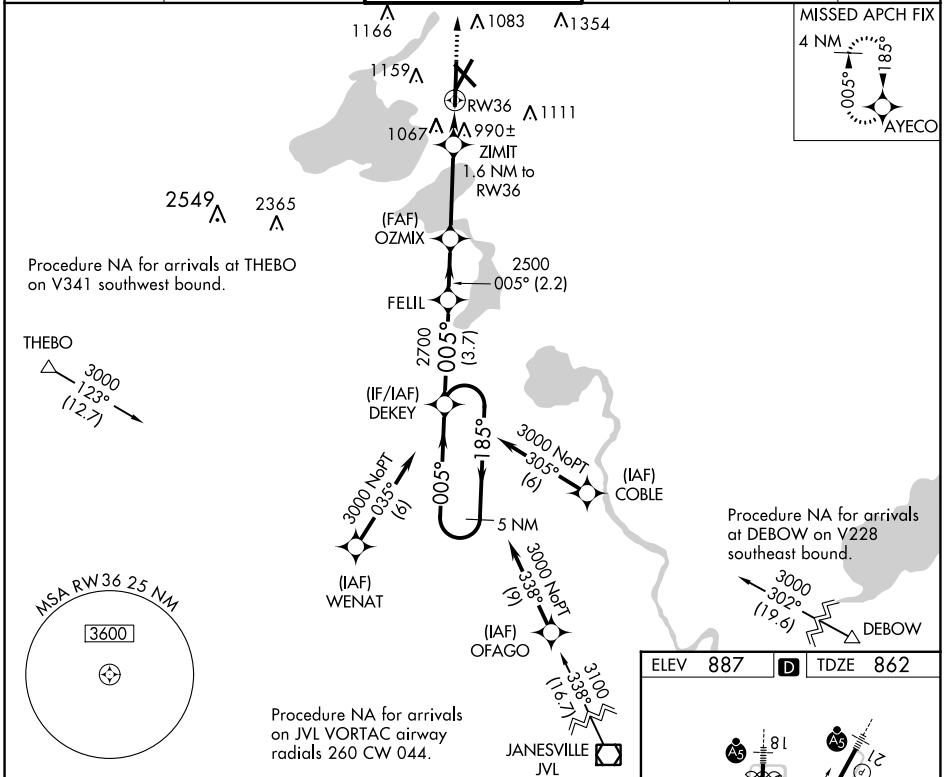
DANE COUNTY RGNL/TRUAX FLD (MSN)

**⚠** For uncompensated Baro-VNAV systems, LNAV/VNAV NA below -19°C (-2°F) or above 54°C (130°F). DME/DME RNP-0.3 NA. For inop ALSF-2, increase LNAV/VNAV all Cats visibility to 1/2 miles. \*\*RVR 1800 authorized with use of FD or AP or HUD to DA.

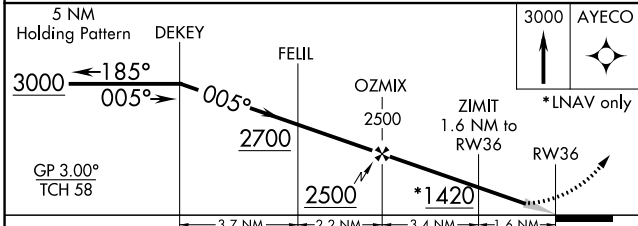
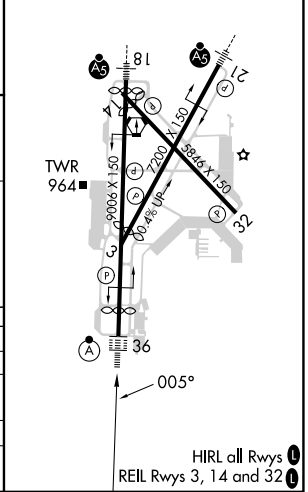


**MISSED APPROACH:**  
Climb to 3000 direct  
AYECO and hold.

ATIS <b>124.65 278.3</b>	MADISON APP CON * <b>135.45 343.7</b>	MADISON TOWER * <b>119.3 (CTAF) 0 257.8</b>	GND CON <b>121.9 348.6</b>	CLNC DEL <b>121.625</b>	UNICOM <b>122.95</b>
-----------------------------	--	--	-------------------------------	----------------------------	-------------------------



ELEV 887	<b>D</b>	TDZE 862
----------	----------	----------



CATEGORY	A	B	C	D
LPV DA **		1062/24	200 (200-1/2)	
LNAV/VNAV DA		1331/60	469 (500-1/4)	
LNAV MDA	1300/24	438 (500-1/2)	1300/40	438 (500-3/4)
CIRCLING	1420-1 533 (600-1)	1460-1 573 (600-1)	1460-1 1/2 573 (600-1/2)	1700-2 3/4 813 (900-2 3/4)

EC-3, 07 SEP 2023 to 05 OCT 2023

EC-3, 07 SEP 2023 to 05 OCT 2023