

LOC/DME I-MNA <b>109.1</b> Chan 28	APP CRS <b>172°</b>	Rwy ldg <b>8914</b> TDZE <b>229</b> Apt Elev <b>266</b>
--	------------------------	---

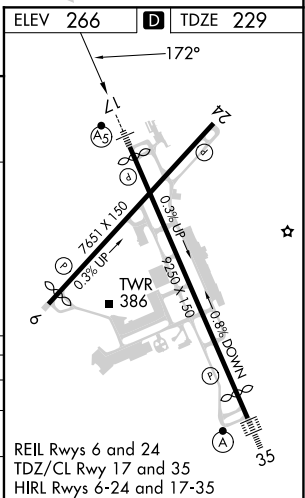
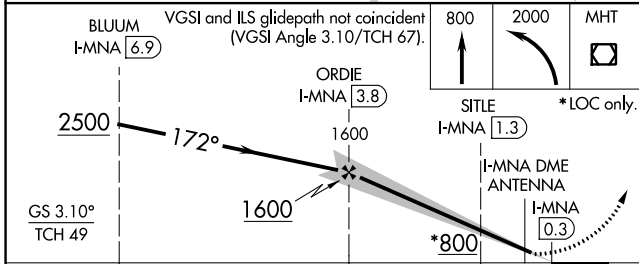
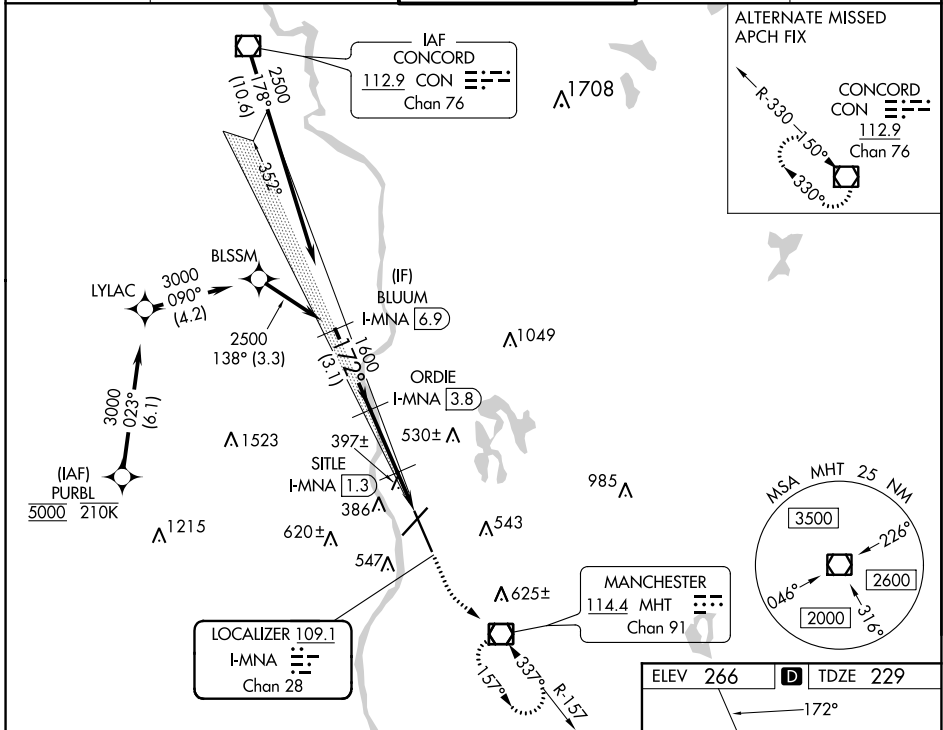
# ILS or LOC RWY 17

MANCHESTER BOSTON RGNL (MHT)

DME required.  
From PURBL: RNAV 1-GPS required.

MALSR  
MISSED APPROACH: Climb to 800 then climbing left turn to 2000 direct MHT VOR/DME and hold.

ATIS <b>119.55</b>	BOSTON APP CON <b>124.9 269.075</b>	MANCHESTER TOWER <b>121.3 239.025</b>	GND CON <b>121.9</b>	CLNC DEL <b>135.9</b>
-----------------------	--	--	-------------------------	--------------------------



CATEGORY	A	B	C	D
S-ILS 17	429/18		200 (200-½)	
S-LOC 17	660/24	431 (400-½)	660/40	431 (400-¾)
CIRCLING	880-1	614 (700-1)	980-2 714 (800-2)	1100-2¾ 834 (900-2¾)

NE-1, 07 SEP 2023 to 05 OCT 2023

NE-1, 07 SEP 2023 to 05 OCT 2023