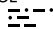
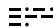


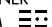
MANCHESTER ONE DEPARTURE

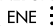
**TOP ALTITUDE:
3000**

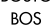
ATIS
119.55
CLNC DEL
135.9
GND CON
121.9
MANCHESTER TOWER
121.3 239.025
BOS DEP CON
124.9 269.075

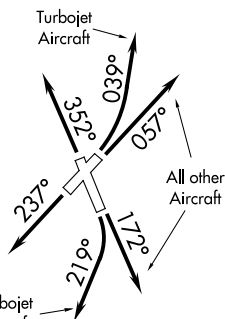
CAMBRIDGE
115.0 CAM 
Chan 97
N42°59.66'-W73°20.64'
L-32-34, H-11-12

CONCORD
112.9 CON 
Chan 76
N43°13.19'-W71°34.53'
L-32

GARDNER
110.6 GDM 
Chan 43
N42°32.76'-W72°03.49'
L-33-34, H-11-12

KENNEBUNK
117.1 ENE 
Chan 118
N43°25.54'-W70°36.81'
L-32, H-11-12

BOSTON
112.7 BOS 
Chan 74
N42°21.45'-W70°59.37'
L-33-34, H-10-11-12



TAKEOFF MINIMUMS:

- Rwy 6: Standard.
- Rwy 17: 300-1½ or standard with a minimum climb of 270' per NM to 600.
- Rwy 24: Standard with a minimum climb of 335' per NM to 800.
- Rwy 35: 300-1½ or standard with a minimum climb of 265' per NM to 1400.

NOTE: RADAR required.

NOTE: Chart not to scale.

DEPARTURE ROUTE DESCRIPTION

- TAKEOFF RUNWAY 6:** TURBOJET AIRCRAFT - Climbing left turn heading 039°, then....
ALL OTHER AIRCRAFT - Climb on heading 057° or as assigned by ATC, then....
- TAKEOFF RUNWAY 17:** TURBOJET AIRCRAFT - Climbing right turn heading 219°, then....
ALL OTHER AIRCRAFT - Climb on heading 172° or as assigned by ATC, then....
- TAKEOFF RUNWAY 24:** Climb on heading 237° or as assigned by ATC, then....
- TAKEOFF RUNWAY 35:** Climb on heading 352° or as assigned by ATC, then....

...expect vectors to assigned route/navaid/fix. Maintain 3000 or as assigned by ATC.
Expect clearance to filed altitude/flight level within five (5) minutes after departure.

MANCHESTER ONE DEPARTURE