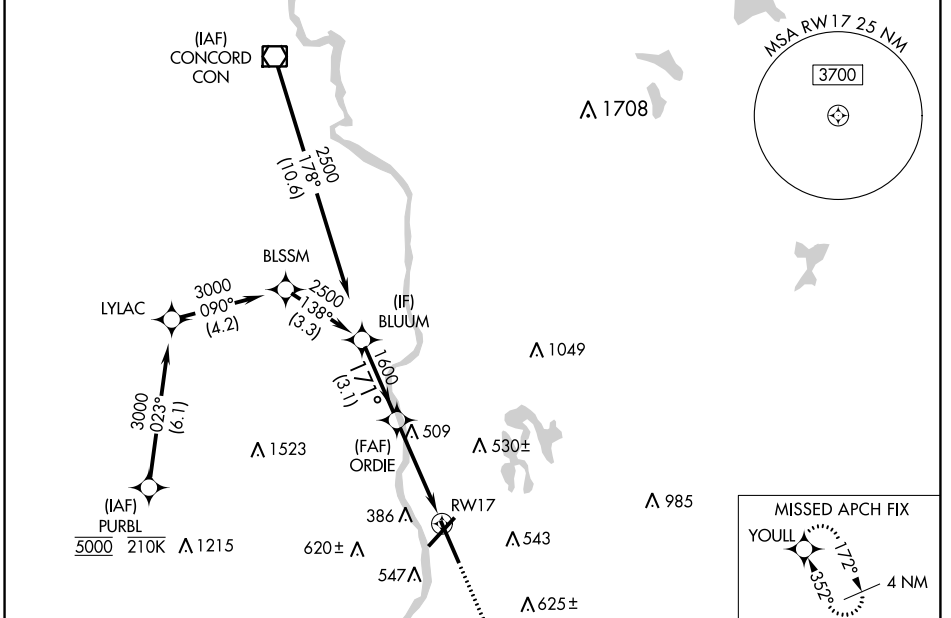


WAAS CH 93807 W17A	APP CRS 171°	Rwy Idg 8914 TDZE 229 Apt Elev 266
----------------------------------------	------------------------	---------------------------------------------------------------

RNAV (GPS) Y RWY 17

MANCHESTER BOSTON RGNL (MHT)

RNP APCH-GPS.		MALSR		MISSED APPROACH: Climb to 2000 direct YOUULL and hold.	
▼ For uncompensated Baro-VNAV systems, LNAV/VNAV NA below -19°C or above 54°C. ▲ For inop ALS, increase LNAV CAT A/B visibility to RVR 5500.					
ATIS 119.55	BOSTON APP CON 124.9 269.075	MANCHESTER TOWER 121.3 239.025	GND CON 121.9	CLNC DEL 135.9	



NE-1, 07 SEP 2023 to 05 OCT 2023

NE-1, 07 SEP 2023 to 05 OCT 2023

BLUUM		VGSi and RNAV glidepath not coincident (VGSi Angle 3.10/TCH 67).		2000	YOUULL
2500	171°	1600	1.4 NM to RWY 17		
GP 3.10°	TCH 49	3.1 NM	2.7 NM	1.4 NM	
CATEGORY	A	B	C	D	
LPV DA	429/18		200 (200-½)		
LNAV/VNAV DA	760/55		531 (500-1)		
LNAV MDA	760/24	531 (500-½)	760/55	531 (500-1)	
CIRCLING	880-1	614 (700-1)	980-2 714 (800-2)	1100-2¾ 834 (900-2¾)	

