

WAAS CH <b>53628</b> <b>W29A</b>	APP CRS <b>287°</b>	Rwy Idg TDZE Apt Elev	<b>4713</b> <b>408</b> <b>408</b>
--	------------------------	-----------------------------	---

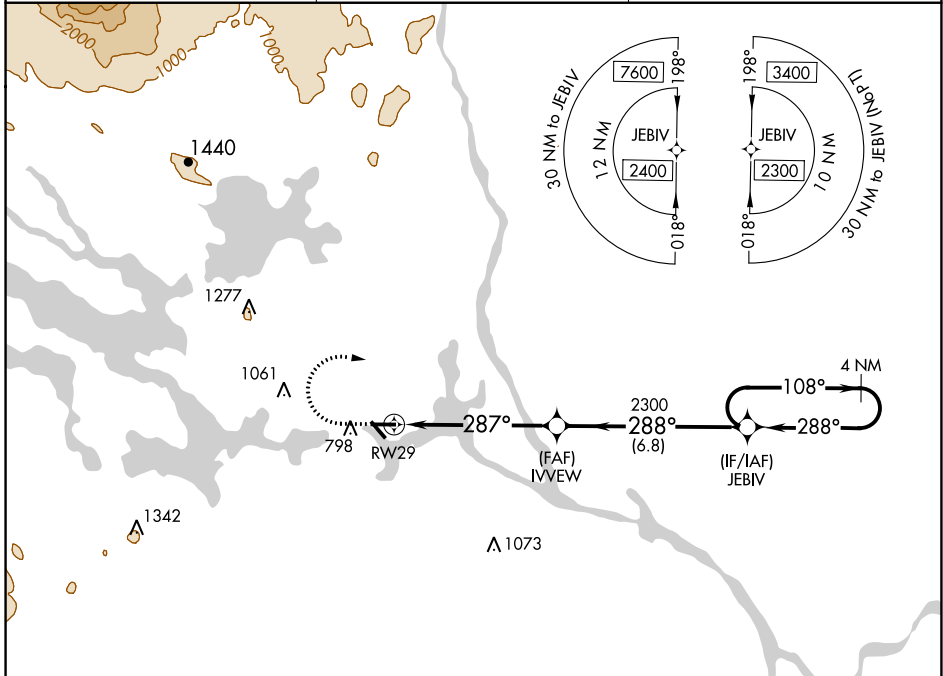
# RNAV (GPS) RWY 29

MILLINOCKET MUNI (MLT)

**⚠** Baro-VNAV NA when using Houlton altimeter setting. For uncompensated Baro-VNAV systems, LNAV/VNAV NA below -15°C (5°F) or above 41°C (105°F). DME/DME RNP-0.3 NA. Helicopter visibility reduction below 3/4 SM NA. When local altimeter setting not received, use Houlton altimeter setting and increase LPV DA to 817 feet and all Cats visibility 3/8 SM; increase LNAV/VNAV DA to 935 feet and all Cats visibility 3/8 SM; increase all MDAs 120 feet and LNAV Cat C/D visibility 3/8 SM, and Circling Cat A/B visibility 1/4 SM and Cat C visibility 1/2 SM. Night landing: Rwy 11, 34 NA.

**MISSED APPROACH:** Climb to 920 then climbing right turn to 2300 direct JEBIV and hold.

ASOS <b>135.225</b>	BOSTON CENTER <b>120.25 346.4</b>	UNICOM <b>122.8 (CTAF)</b>
------------------------	--------------------------------------	-------------------------------



ELEV 408	TDZE 408	920	2300	JEBIV
<p>REIL Rwy 29 <b>1</b></p> <p>MIRL Rwy 11-29 <b>1</b></p>		<p>4 NM Holding Pattern</p> <p>GP 3.00° TCH 5T</p>		
CATEGORY	A	B	C	D
LPV DA	697-1		289 (300-1)	
LNAV/VNAV DA	815-1 3/8		407 (500-1 3/8)	
LNAV MDA	920-1	512 (600-1)	920-1 1/2	512 (600-1 1/2)
CIRCLING	1100-1	692 (700-1)	1100-2 692 (700-2)	1380-3 972 (1000-3)

NE-1, 07 SEP 2023 to 05 OCT 2023

NE-1, 07 SEP 2023 to 05 OCT 2023