

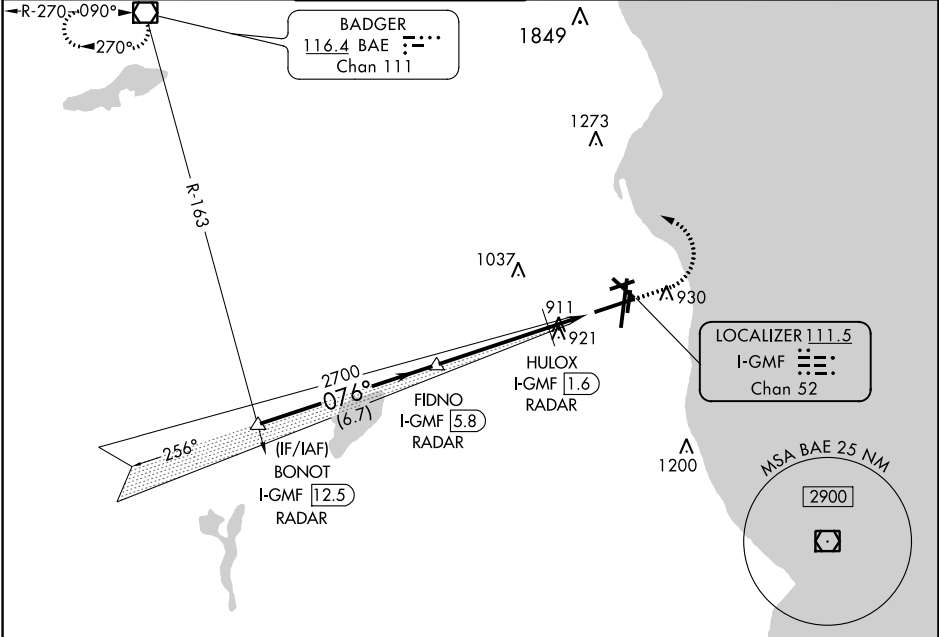
LOC/DME I-GMF <b>111.5</b> Chan <b>52</b>	APP CRS <b>076°</b>	Rwy Idg <b>8012</b> TDZE <b>729</b> Apt Elev <b>729</b>
---	------------------------	---

# ILS or LOC RWY 7R

GENERAL MITCHELL INTL (MKE)

RADAR required for procedure entry. DME or RADAR required.		MALSR 	MISSED APPROACH: Climb to 2900 then left turn direct BAE VOR/DME and hold.		
# RVR 1800 authorized with use of FD or AP or HUD to DA.					

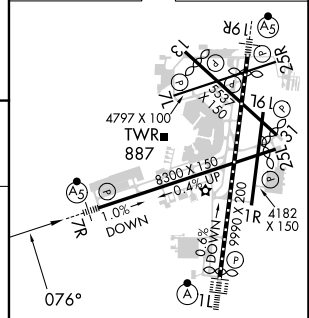
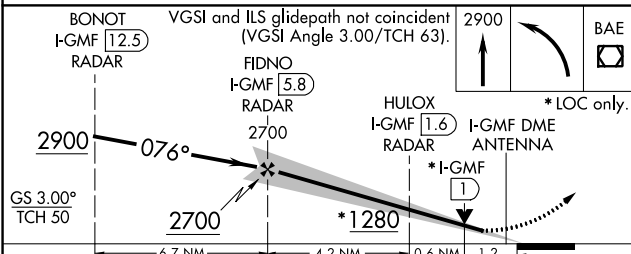
D-ATIS <b>126.4</b>	MILWAUKEE APP CON <b>126.5 307.0</b>	MILWAUKEE TOWER <b>124.575 269.05</b>	GND CON <b>121.8 263.125</b>	CLNC DEL <b>120.8</b>	CPDLC
------------------------	---	--	---------------------------------	--------------------------	-------



EC-3, 07 SEP 2023 to 05 OCT 2023

EC-3, 07 SEP 2023 to 05 OCT 2023

ELEV 729	<b>D</b> TDZE 729
----------	-------------------



CATEGORY	A	B	C	D
S-ILS 7R #	929/24 200 (200-½)			
S-LOC 7R	1180/24	451 (500-½)	1180/45	451 (500-¾)
<b>C</b> CIRCLING	1240-1	511 (600-1)	1240-1½ 511 (600-½)	1360-2 631 (700-2)

TDZ/CL Rwy 1L	REL Rws 1R, 7L,
	13, 25L, 25R and 31
	HIRL Rws 1L-19R and 7R-25L
	MIRL Rws 1R-19L, 13-31, and 7L-25R
	FAF to MAP 6 NM
Knots	60 90 120 150 180
Min:Seq	6:00 4:00 3:00 2:24 2:00