

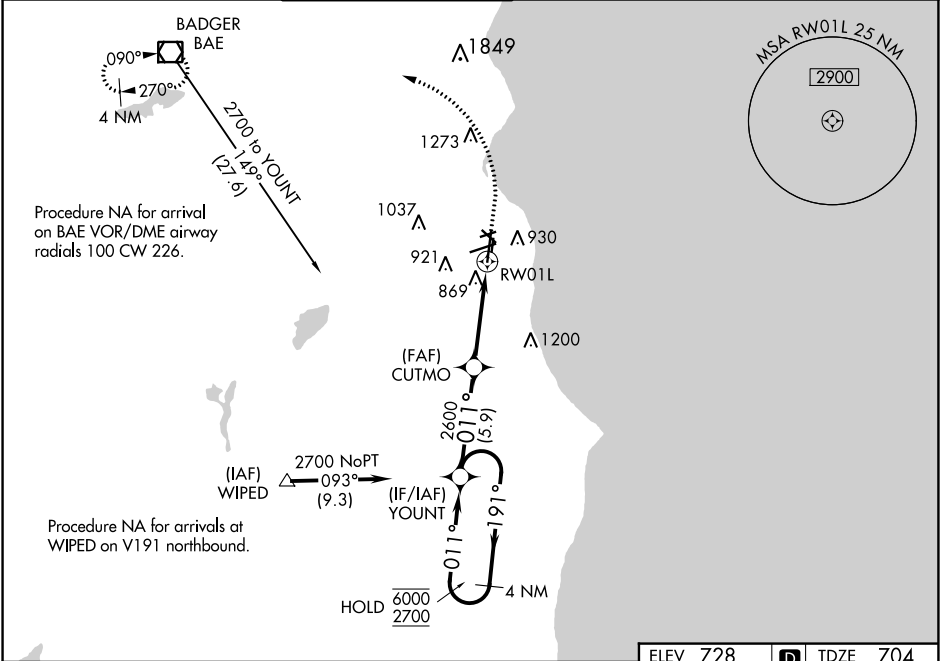
WAAS CH <b>45742</b> <b>W01A</b>	APP CRS <b>011°</b>	Rwy Idg TDZE <b>704</b> Apt Elev <b>728</b>	<b>9080</b>
--	------------------------	---	-------------

# RNAV (GPS) RWY 1L

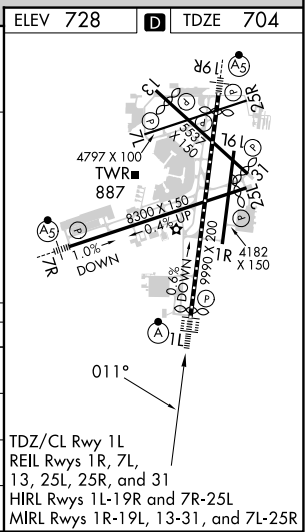
GENERAL MITCHELL INTL (MKE)

RNP APCH - GPS		ALSF-2	MISSED APPROACH: Climb to 1130 then climbing left turn to 2900 direct BAE VOR/DME and hold.
<p>▼ For uncompensated Baro-VNAV systems, LNAV/VNAV NA below -19°C or above 54°C. For inop ALS increase LNAV/VNAV all Cats visibility to RVR 6000, increase LNAV Cat C/D visibility to RVR 6000.</p>			

D-ATIS <b>126.4</b>	MILWAUKEE APP CON <b>126.5 307.0</b>	MILWAUKEE TOWER <b>124.575 269.05</b>	GND CON <b>121.8 263.125</b>	CLNC DEL <b>120.8</b>	CPDLC
------------------------	---	--	---------------------------------	--------------------------	-------



VGSi and RNAV glidepath not coincident (VGSi Angle 3.00/TCH 72).		1130	2900	BAE
4 NM Holding Pattern YOUNT				
<p>6000 ← 191°</p> <p>2700 → 011°</p> <p>GP 3.00° TCH 56</p>		<p>CUTMO</p> <p>2600</p> <p>1.1 NM to RW01L</p> <p>RW01L</p> <p>5.9 NM</p> <p>4.7 NM</p> <p>1.1 NM</p>		
CATEGORY	A	B	C	D
LPV DA		904/18	200 (200-½)	
LNAV/VNAV DA		1120/40	416 (400-¾)	
LNAV MDA	1120/24	416 (400-½)	1120/40	416 (400-¾)
CIRCLING	1240-1	512 (600-1)	1240-1½ 512 (600-1½)	1360-2 632 (700-2)



EC-3, 07 SEP 2023 to 05 OCT 2023

EC-3, 07 SEP 2023 to 05 OCT 2023