

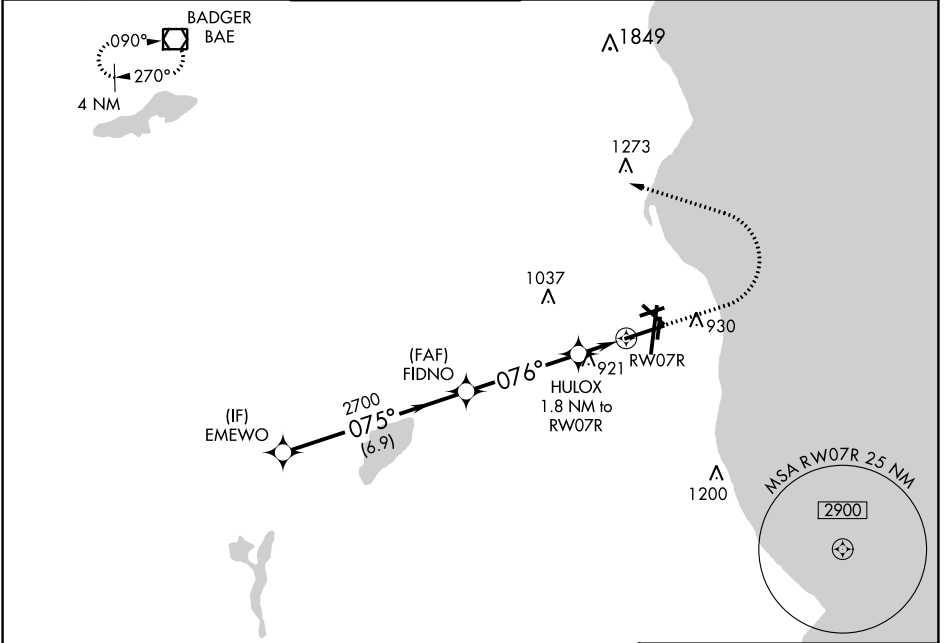
WAAS CH 69226 W07A	APP CRS 076°	Rwy Idg TDZE Apt Elev	8012 729 729
--	------------------------	-----------------------------	---

RNAV (GPS) Z RWY 7R

GENERAL MITCHELL INTL (MKE)

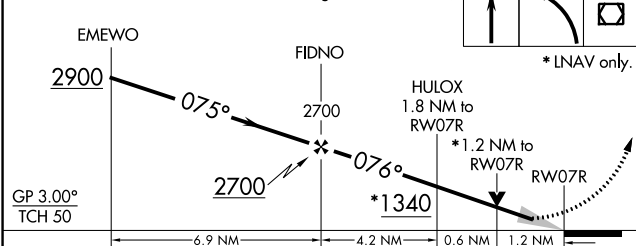
For uncompensated Baro-VNAV systems, LNAV/VNAV NA below -20°C (-4°F) or above 54°C (130°F). DME/DME RNP-0.3 NA. # RVR 1800 authorized with use of FD or AP or HUD to DA.	MALSR 	MISSED APPROACH: Climb to 2900 then climbing left turn to 3000 direct BAE VOR/DME and hold.

D-ATIS 126.4	MILWAUKEE APP CON 126.5 307.0	MILWAUKEE TOWER 124.575 269.05	GND CON 121.8 263.125	CLNC DEL 120.8	CPDLC
------------------------	---	--	---------------------------------	--------------------------	-------

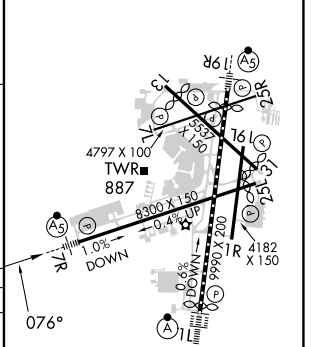


ELEV 729	D	TDZE 729
----------	----------	----------

VGSI and RNAV glidepath not coincident (VGSI Angle 3.00/TCH 63).



CATEGORY	A	B	C	D
LPV DA #		929/24	200 (200-½)	
LNAV/VNAV DA		1232-1¼	503 (600-1¼)	
LNAV MDA	1180/24	451 (500-½)	1180/45	451 (500-¾)
C CIRCLING	1240-1	511 (600-1)	1240-1½ 511 (600-1½)	1360-2 631 (700-2)



TDZ/CL Rwy 1L
REIL Rwy 1R, 7L, 13, 25R, 25L and 31
HIRL Rwy 1L-19R and 7R-25L
MIRL Rwy 1R-19L, 13-31 and 7L-25R

EC-3, 07 SEP 2023 to 05 OCT 2023

EC-3, 07 SEP 2023 to 05 OCT 2023