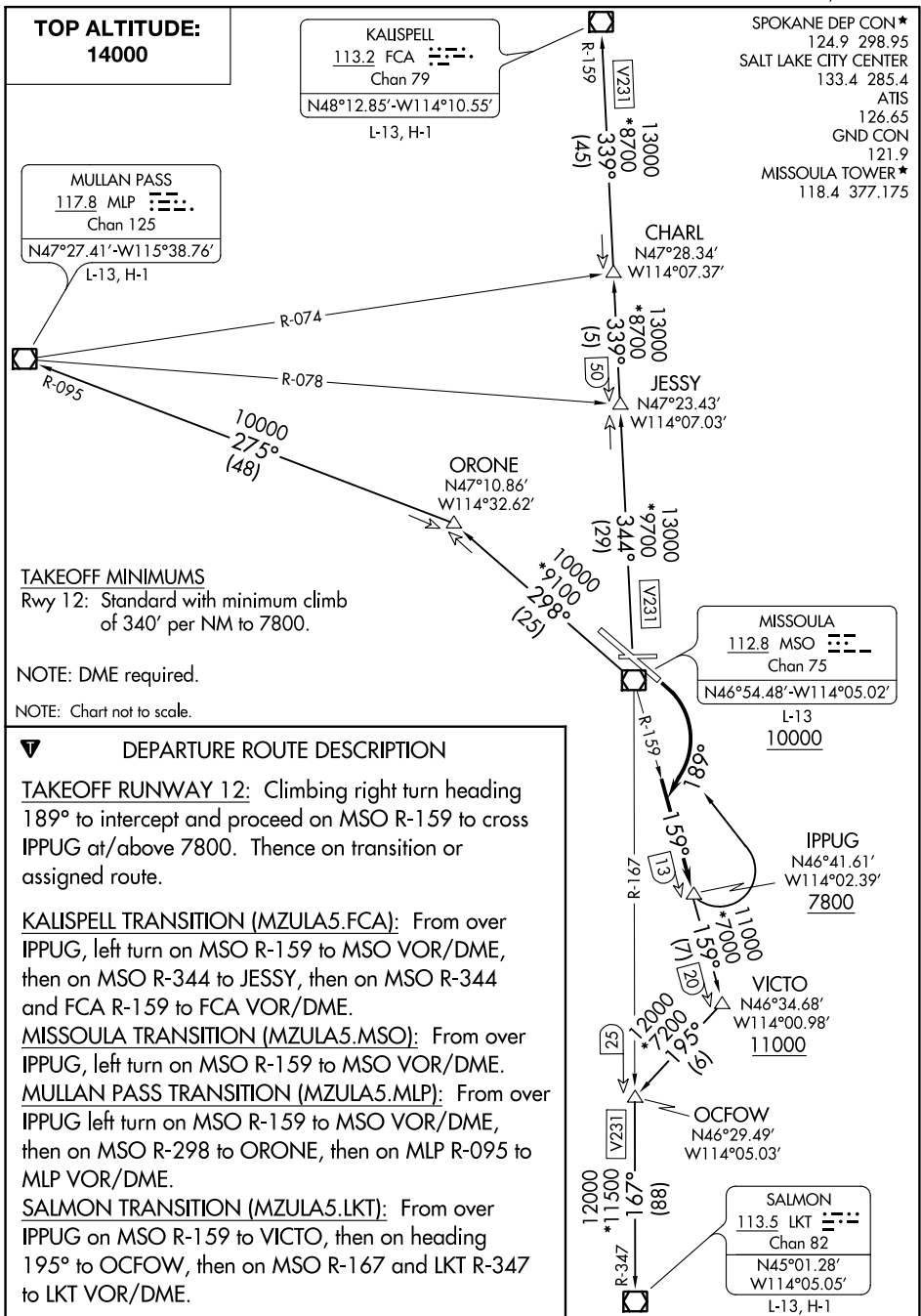


MZULA FIVE DEPARTURE

AL-266 (FAA)

MISSOULA MONTANA (MISO)
MISSOULA, MONTANA



SPOKANE DEP CON *
124.9 298.95
SALT LAKE CITY CENTER
133.4 285.4
ATIS
126.65
GND CON
121.9
MISSOULA TOWER *
118.4 377.175

TOP ALTITUDE:
14000

KALISPELL
113.2 FCA
Chan 79
N48°12.85'-W114°10.55'
L-13, H-1

MULLAN PASS
117.8 MLP
Chan 125
N47°27.41'-W115°38.76'
L-13, H-1

CHARL
N47°28.34'
W114°07.37'

JESSY
N47°23.43'
W114°07.03'

ORONE
N47°10.86'
W114°32.62'

MISSOULA
112.8 MSO
Chan 75
N46°54.48'-W114°05.02'
L-13
10000

IPPUG
N46°41.61'
W114°02.39'
7800

VICTO
N46°34.68'
W114°00.98'
11000

OCFOW
N46°29.49'
W114°05.03'

SALMON
113.5 LKT
Chan 82
N45°01.28'
W114°05.05'
L-13, H-1

TAKEOFF MINIMUMS
Rwy 12: Standard with minimum climb
of 340' per NM to 7800.

NOTE: DME required.

NOTE: Chart not to scale.

DEPARTURE ROUTE DESCRIPTION

TAKEOFF RUNWAY 12: Climbing right turn heading 189° to intercept and proceed on MSO R-159 to cross IPPUG at/above 7800. Thence on transition or assigned route.

KALISPELL TRANSITION (MZULA5.FCA): From over IPPUG, left turn on MSO R-159 to MSO VOR/DME, then on MSO R-344 to JESSY, then on MSO R-344 and FCA R-159 to FCA VOR/DME.

MISSOULA TRANSITION (MZULA5.MSO): From over IPPUG, left turn on MSO R-159 to MSO VOR/DME.

MULLAN PASS TRANSITION (MZULA5.MLP): From over IPPUG left turn on MSO R-159 to MSO VOR/DME, then on MSO R-298 to ORONE, then on MLP R-095 to MLP VOR/DME.

SALMON TRANSITION (MZULA5.LKT): From over IPPUG on MSO R-159 to VICTO, then on heading 195° to OCFOW, then on MSO R-167 and LKT R-347 to LKT VOR/DME.

NW-1, 07 SEP 2023 to 05 OCT 2023

NW-1, 07 SEP 2023 to 05 OCT 2023

MZULA FIVE DEPARTURE