
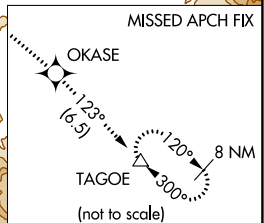
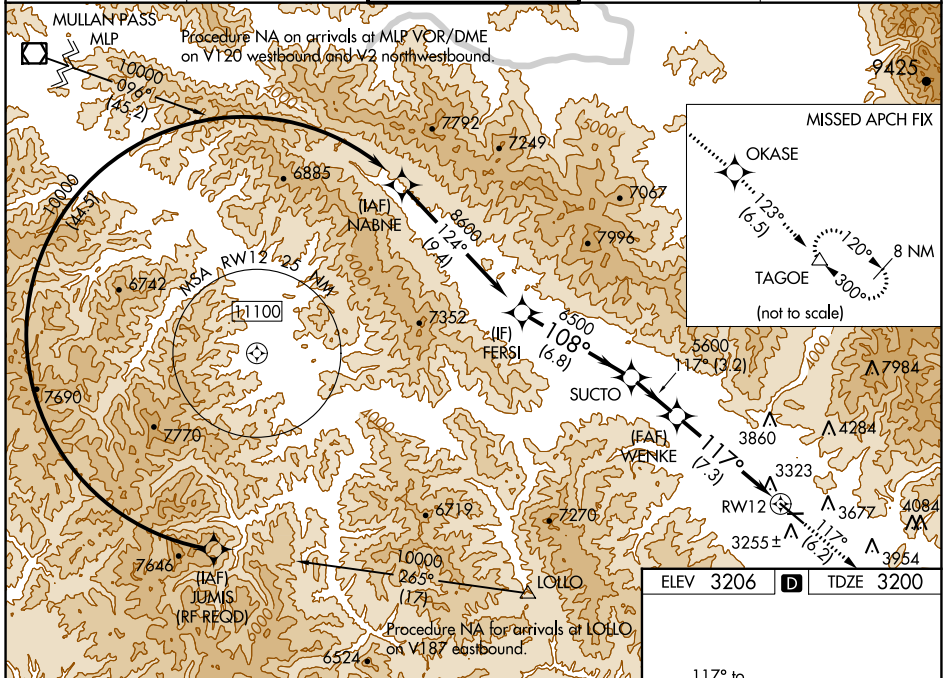


APP CRS	Rwy Idg	9501
117°	TDZE	3200
	Apt Elev	3206

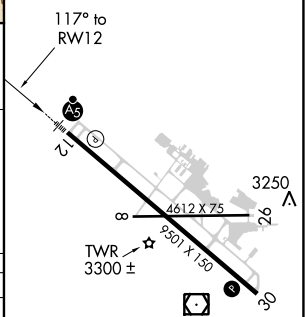
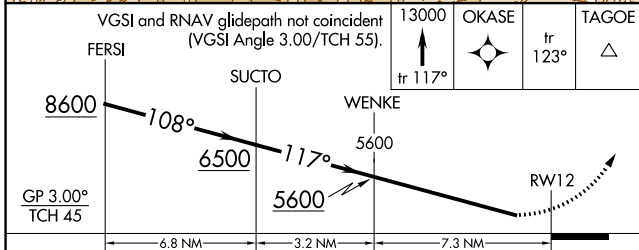
RNAV (RNP) Z RWY 12

MISSOULA MONTANA (MISO)

RNP AR APCH.		MISSED APPROACH: Climb to 13000 on track 117° to OKASE and on track 123° to TAGOE and hold, continue climb-in-hold to 13000.	
<p>▼ For uncompensated Baro-VNAV systems, LNAV/VNAV NA below -21° C (-6°F) or above 43°C (109°F).</p> <p>▲ For inop ALS, increase RNP 0.12 all Cats visibility to RVR 6000. For inop ALS, increase RNP 0.30 all Cats visibility to 2½ SM. When local weather not received, procedure NA.</p>		<p>MALS R</p>  <p>*Missed approach requires minimum climb of 350 feet per NM to 8300; if unable to meet climb gradient, see RNAV (GPS) Y RWY 12.</p> <p>#Missed approach requires minimum climb of 425 feet per NM to 8300.</p>	
ATIS	SPOKANE APP CON*	MISSOULA TOWER*	GND CON
126.65	124.9 298.95	118.4 (CTAF) 0 377.175	121.9
			UNICOM
			122.95



ELEV	3206	D	TDZE	3200
------	------	---	------	------



CATEGORY	A	B	C	D
RNP 0.12 DA#	3518/40		318 (400-¾)	
RNP 0.30 DA*	3880-2		680 (700-2)	

AUTHORIZATION REQUIRED

REIL Rwy 30
MIRL Rwy 8-26
HIRL Rwy 12-30

NW-1, 07 SEP 2023 to 05 OCT 2023

NW-1, 07 SEP 2023 to 05 OCT 2023