

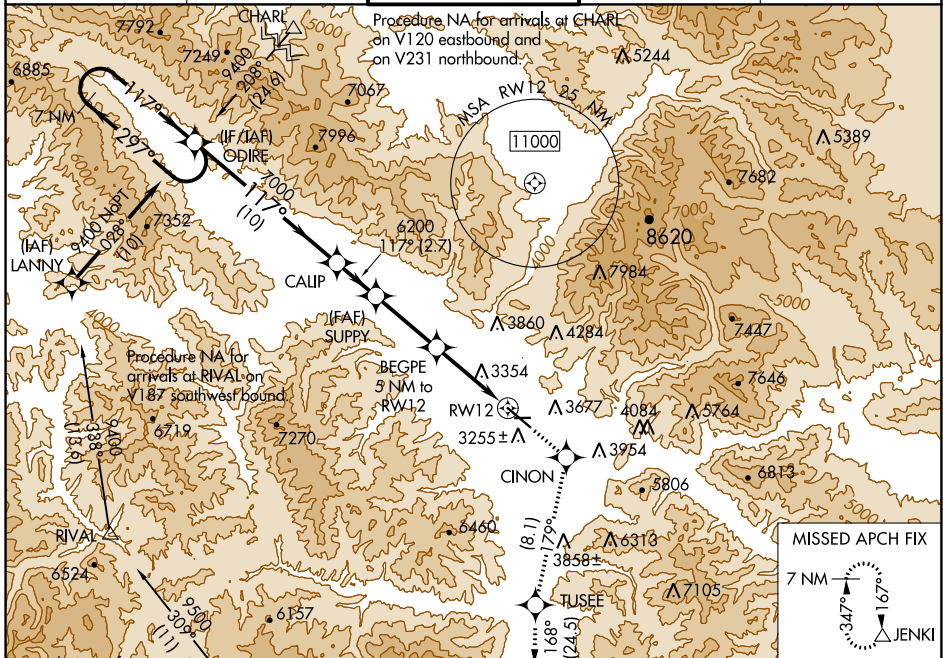
WAAS CH 65715 W12B	APP CRS 117°	Rwy Idg TDZE Apt Elev	9501 3200 3206
--	------------------------	-----------------------------	---

RNAV (GPS) Y RWY 12

MISSOULA MONTANA (MISO)

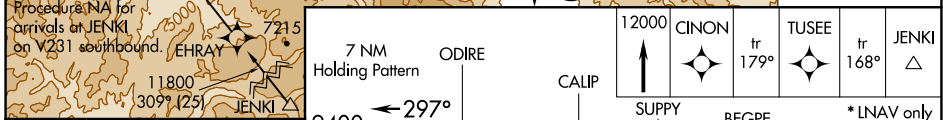
RNP APCH.	MALS R	MISSED APPROACH: (Do not exceed 200K until CINON) Climb to 2000 direct CINON and on track 179° to TUSEE and on track 168° to JENKI and hold, continue climb-in-hold to 2000. ## Missed approach requires minimum climb of 325 feet per NM to 7700.
<p>▼ Circling N/A for Cats C and D northeast of Rwy 12-30. Inop table does not apply to LNAV # Cats C/D. Inop table does not apply to LPV † all Cats. **RVR 1800 authorized with use of FD or AP or HUD to DA.</p>		

ATIS 126.65	SPOKANE APP CON * 124.9 298.95	MISSOULA TOWER * 118.4 (CTAF) 377.175	GND CON 121.9	UNICOM 122.95
-----------------------	--	---	-------------------------	-------------------------

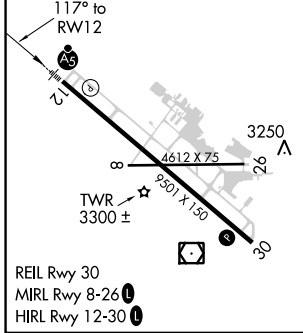


NW-1, 07 SEP 2023 to 05 OCT 2023

NW-1, 07 SEP 2023 to 05 OCT 2023



ELEV 3206	D	TDZE 3200
-----------	---	-----------



7 NM Holding Pattern	ODIRE	2000 CINON	tr 179° TUSEE	tr 168° JENKI
9400	← 297°	↑	◆	◆
GP 3.00° TCH 55	117° →	6200 SUPPLY	BEGPE 5 NM to RW12	*1.2 NM to RW12
		7000	*4840	
		6200		
		10 NM	2.7 NM	4.3 NM

CATEGORY	A	B	C	D
LPV DA **		3400/24	200 (200-½)	
LPV DA †		4229-4	1029 (1100-4)	
LNAV MDA ##		3640/24	440 (500-½)	3640/40 440 (500-¾)
LNAV MDA #		4520/40 1320 (1400-¾)	4520/55 1320 (1400-1)	4520-3 1320 (1400-3)
CIRCLING		4520-1¼ 1314 (1400-1¼)	4700-1½ 1494 (1500-½)	4700-3 1494 (1500-3)
				5140-3 1934 (2000-3)