

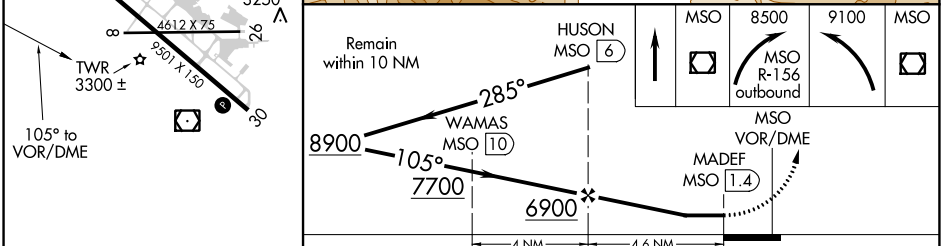
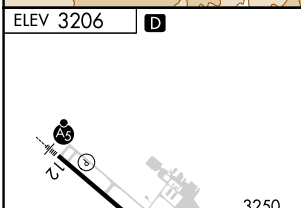
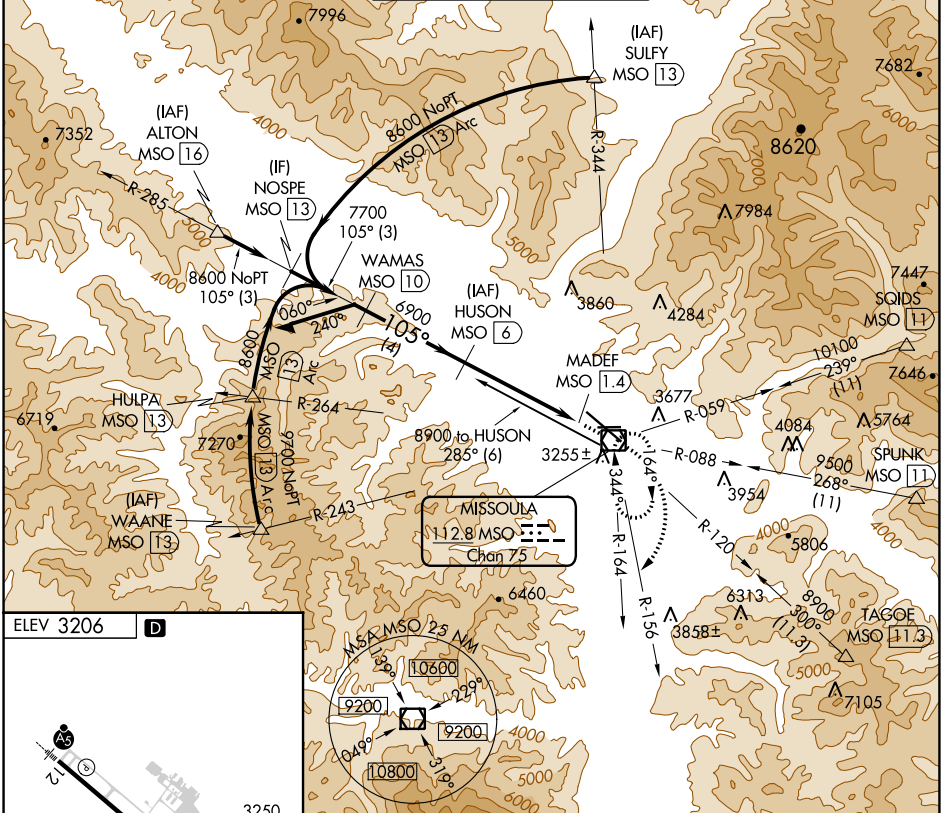
VOR/DME MSO 112.8 Chan 75	APP CRS 105°	Rwy Idg TDZE Apt Elev N/A N/A 3206
---	------------------------	--

VOR-A

MISSOULA MONTANA (MSO)

DME required.		<p>MISSED APPROACH: Climb direct MSO VOR/DME then climbing right turn to 8500 on MSO VOR/DME R-156 outbound then climbing left turn to 9100 direct to MSO VOR/DME and hold.</p>			
<p>▽ ⚠ ❄ -12°C</p>	<p>ATIS 126.65</p>	<p>SPOKANE APP CON * 124.9 298.95</p>	<p>MISSOULA TOWER * 118.4 (CTAF) 377.175</p>	<p>GND CON 121.9</p>	<p>UNICOM 122.95</p>

ATIS 126.65	SPOKANE APP CON * 124.9 298.95	MISSOULA TOWER * 118.4 (CTAF) 377.175	GND CON 121.9	UNICOM 122.95
-----------------------	--	---	-------------------------	-------------------------



REIL Rwy 30	MIRL Rwy 8-26	HIRL Rwy 12-30
REIL Rwy 30	MIRL Rwy 8-26	HIRL Rwy 12-30

CATEGORY	A	B	C	D
C CIRCLING	5120-1¼ 1914 (2000-1¼)	5120-1½ 1914 (2000-1½)	5120-3 1914 (2000-3)	5160-3 1954 (2000-3)

NW-1, 07 SEP 2023 to 05 OCT 2023

NW-1, 07 SEP 2023 to 05 OCT 2023