

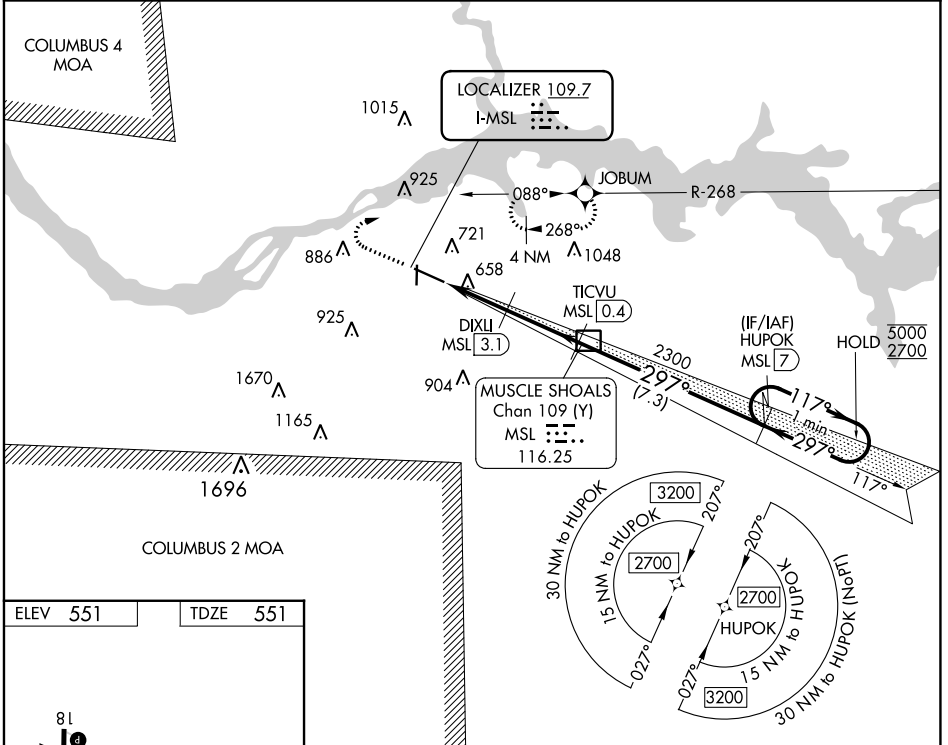
LOC I-MSL 109.7	APP CRS 297°	Rwy Idg TDZE Apt Elev	6694 551 551
---------------------------	------------------------	-----------------------------	---

ILS Y or LOC Y RWY 30

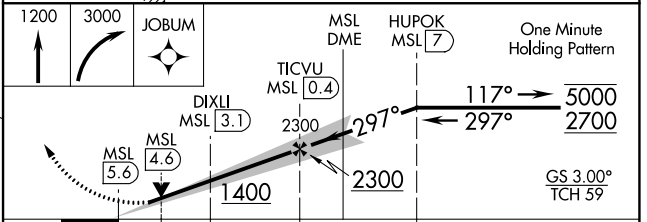
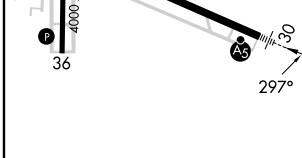
NORTHWEST ALABAMA RGNL (MSL)

RNAV 1 - GPS.	MALSR 	MISSED APPROACH: Climb to 1200 then climbing right turn to 3000 direct JOBUM and hold, continue climb-in-hold to 3000.
DME required.		
<p>⚠ DME from MSL DME. Simultaneous reception of I-MSL and MSL DME required. For inop ALS increase S-LOC 30 Cats C/D visibility to 1 SM.</p>		

ASOS 119.425	MEMPHIS CENTER 120.8 307.0	GCO 121.725	UNICOM 123.05 (CTAF) 0
------------------------	--------------------------------------	-----------------------	----------------------------------



ELEV 551	TDZE 551
----------	----------



CATEGORY	A	B	C	D
S-ILS 30	751-1/2		200 (200-1/2)	
S-LOC 30	920-1/2 369 (400-1/2)		920-5/8 369 (400-5/8)	
C CIRCLING	1040-1 489 (500-1)		1280-2 729 (800-2) 1280-2 1/4 729 (800-2 1/4)	

- REIL Rwy 12 0
- MIRL Rwy 18-36 0
- HIRL Rwy 12-30 0

SE-4, 07 SEP 2023 to 05 OCT 2023

SE-4, 07 SEP 2023 to 05 OCT 2023