

|  |                        |   |   |
|--|------------------------|---|---|
| WAAS<br>CH <b>90518</b><br><b>W12A</b> | APP CRS<br><b>117°</b> | Rwy Idg<br>TDZE <b>544</b><br>Apt Elev <b>551</b> | <b>6694</b><br><b>544</b><br><b>551</b> |
|--|------------------------|---|---|

# RNAV (GPS) RWY 12

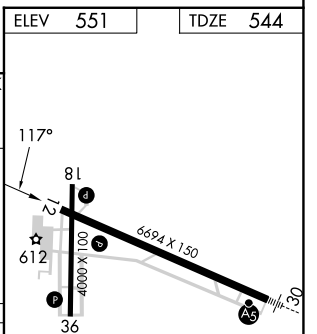
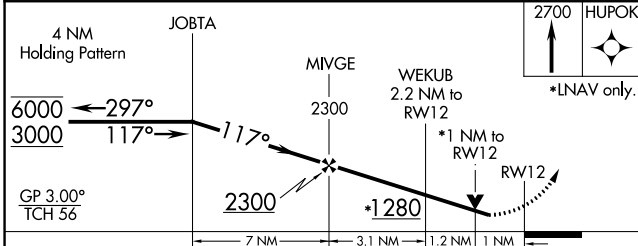
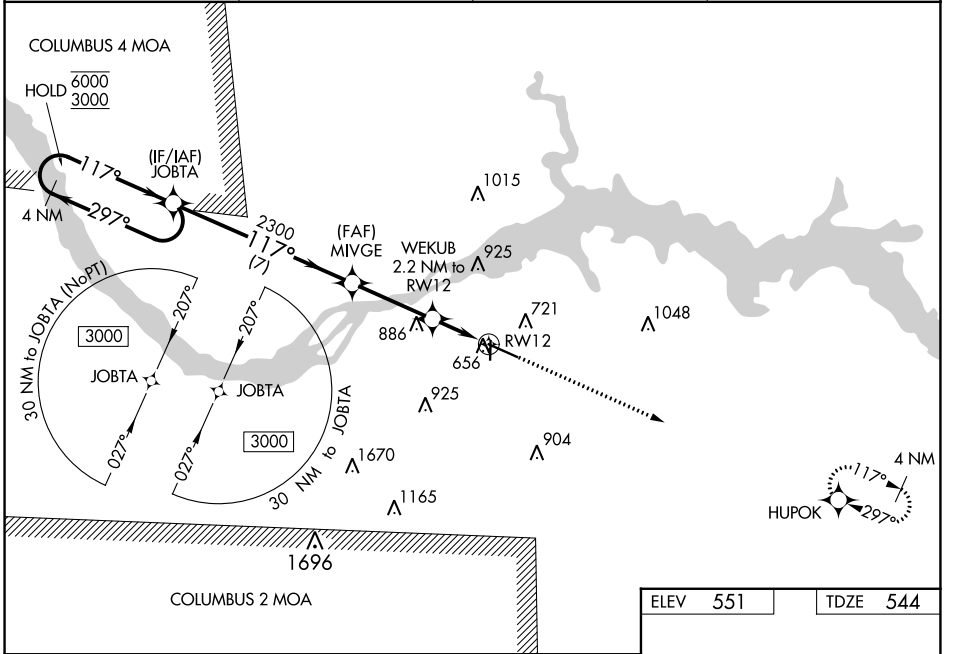
NORTHWEST ALABAMA RGNL (MISL)

RNP APCH.

▼ Rwy 12 helicopter visibility reduction below 3/4 SM NA. For uncompensated Baro-VNAV systems, LNAV/VNAV NA below -4°C or above 54°C. When local altimeter setting not received use Decatur altimeter setting and increase LPV DA to 934 feet, LNAV/VNAV DA to 1025 feet and all MDA 100 feet; increase LPV all Cats visibility 1/4 SM, LNAV/VNAV all Cats visibility 3/8 SM, LNAV Cat C and D visibility 3/8 SM and Circling Cat C and D visibility 1/2 SM. Baro-VNAV and VDP NA when using Decatur altimeter setting.

MISSED APPROACH: Climb to 2700 direct HUPOK and hold.

|                        |                                      |                       |                                |
|------------------------|--------------------------------------|-----------------------|--------------------------------|
| ASOS<br><b>119.425</b> | MEMPHIS CENTER<br><b>120.8 307.0</b> | GCO<br><b>121.725</b> | UNICOM<br><b>123.05 (CTAF)</b> |
|------------------------|--------------------------------------|-----------------------|--------------------------------|



| CATEGORY     | A      | B           | C                     | D                             |
|--------------|--------|-------------|-----------------------|-------------------------------|
| LPV DA       |        | 851-1       | 307 (300-1)           |                               |
| LNAV/VNAV DA |        | 942-1 1/4   | 398 (400-1 1/4)       |                               |
| LNAV MDA     |        | 920-1       | 376 (400-1)           |                               |
| CIRCLING     | 1040-1 | 489 (500-1) | 1280-2<br>729 (800-2) | 1280-2 1/4<br>729 (800-2 1/4) |

ELEV 551 TDZE 544

2700 HUPOK

\*LNAV only.

REIL Rwy 12 1  
MIRL Rwy 18-36 1  
HIRL Rwy 12-30 1

SE-4, 07 SEP 2023 to 05 OCT 2023

SE-4, 07 SEP 2023 to 05 OCT 2023