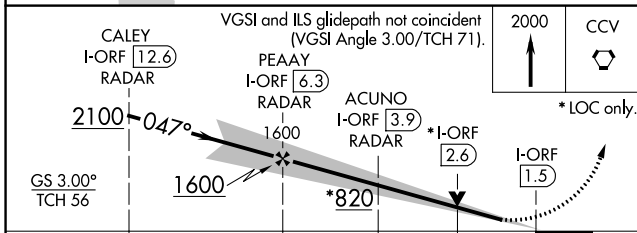
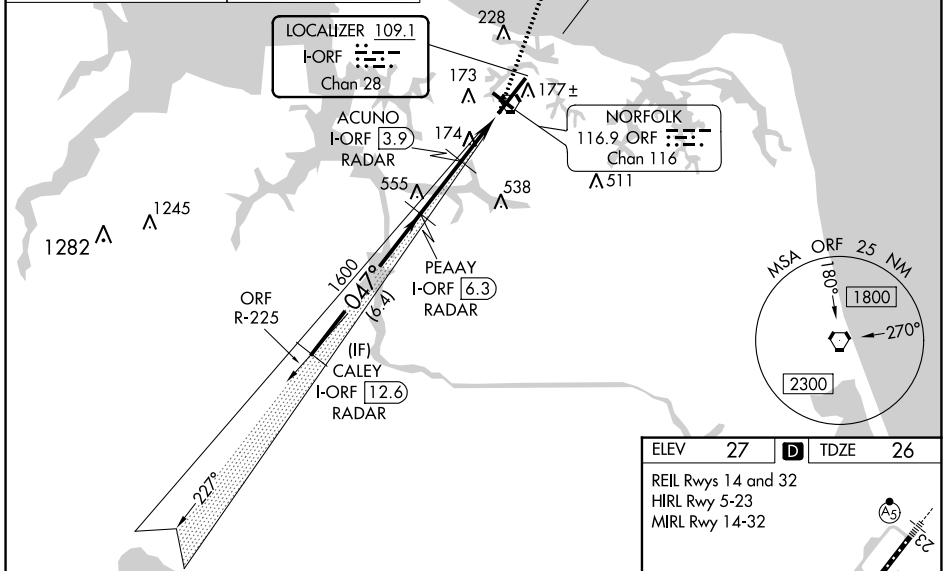
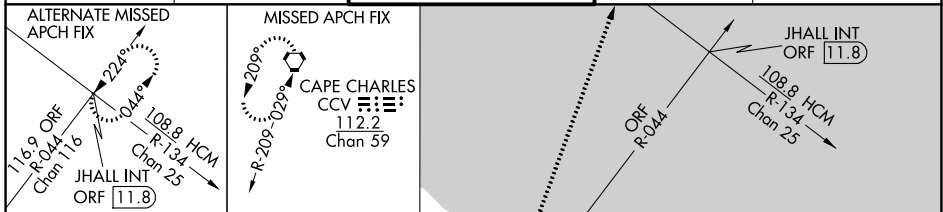


LOC/DME I-ORF 109.1 Chan 28	APP CRS 047°	Rwy ldg 7809 TDZE 26 Apt Elev 27
--	------------------------	---

ILS or LOC RWY 5

NORFOLK INTL (ORF)

DME or RADAR required. RADAR required for procedure entry.		MALSR	MISSED APPROACH: Climb to 2000 direct CCV VORTAC and hold.
ATIS 127.15	NORFOLK APP CON 118.9 353.7	NORFOLK TOWER 120.8 257.8	GND CON 121.9
		CLNC DEL 118.5	



ELEV 27	TDZE 26
REIL Rwy 14 and 32 HIRL Rwy 5-23 MIRL Rwy 14-32	
FAF to MAP 4.8 NM	
Knots	60 90 120 150 180
Min:Sec	4:48 3:12 2:24 1:55 1:36

CATEGORY	A	B	C	D
S-ILS 5**	226/24 200 (200-½)			
S-LOC 5	440/24 414 (500-½)	440/40 414 (500-¾)		
CIRCLING	480-1 453 (500-1)	540-1 513 (600-1)	540-1½ 513 (600-1½)	900-2¾ 873 (900-2¾)

NE-3, 07 SEP 2023 to 05 OCT 2023

NE-3, 07 SEP 2023 to 05 OCT 2023