

APP CRS	Rwy Idg	<b>7809</b>
<b>047°</b>	TDZE	<b>26</b>
	Apt Elev	<b>27</b>

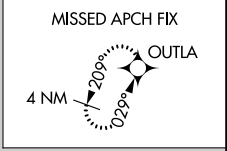
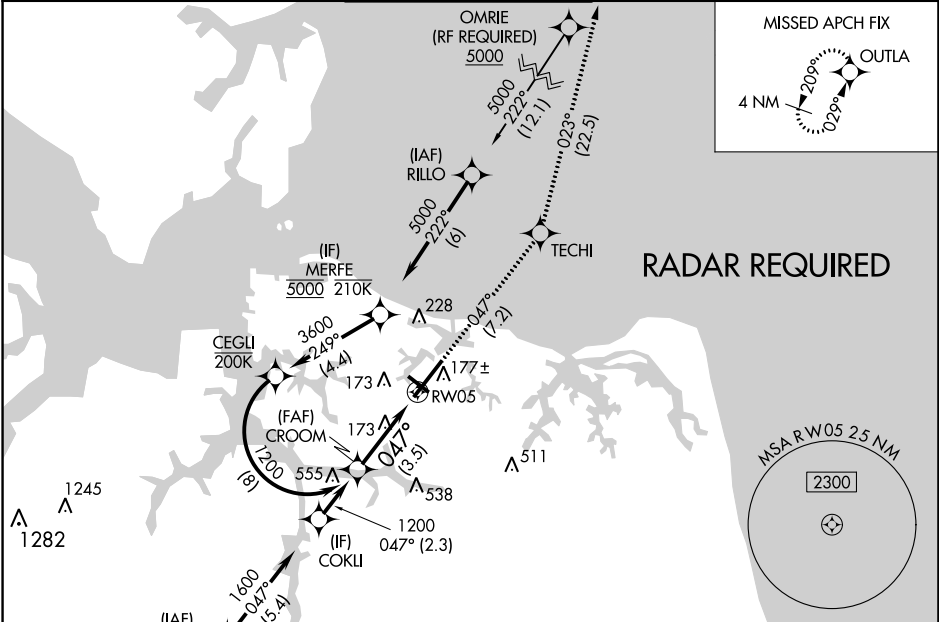
# RNAV (RNP) Y RWY 5

NORFOLK INTL (O.R.F)

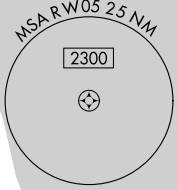
▼ For uncompensated Baro-VNAV systems, LNAV/VNAV NA below -9°C (16°F) or above 54°C (130°F). GPS required.

MALSR  MISSED APPROACH: Climb to 2000 on track 047° to TECHI and on track 023° to OUTLA and hold.

ATIS <b>127.15</b>	NORFOLK APP CON <b>118.9 353.7</b>	NORFOLK TOWER <b>120.8 257.8</b>	GND CON <b>121.9</b>	CLNC DEL <b>118.5</b>
-----------------------	---------------------------------------	-------------------------------------	-------------------------	--------------------------



**RADAR REQUIRED**



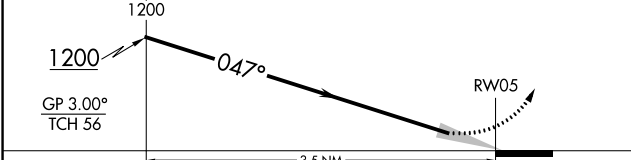
NE-3, 07 SEP 2023 to 05 OCT 2023

NE-3, 07 SEP 2023 to 05 OCT 2023



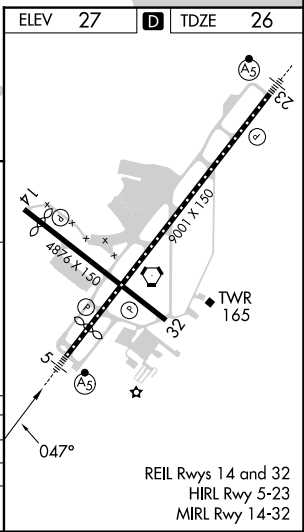
See planview for multiple IF locations.

2000	tr 047°	TECHI	tr 023°	OUTLA
------	---------	-------	---------	-------



CATEGORY	A	B	C	D
RNP 0.10 DA		350/26	324 (400-½)	
RNP 0.30 DA		454/40	428 (500-¾)	

**AUTHORIZATION REQUIRED**



REIL Rwy 14 and 32  
HIRL Rwy 5-23  
MIRL Rwy 14-32