

VORTAC ORF 116.9 Chan 116	APP CRS 326°	Rwy Idg TDZE 25 Apt Elev 26	3901
--	------------------------	---	-------------

VOR/DME RWY 32

NORFOLK INTL (ORF)

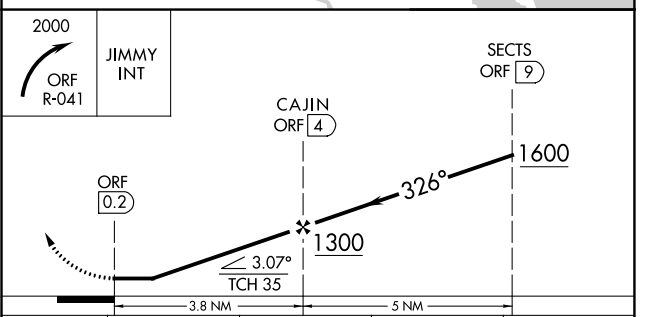
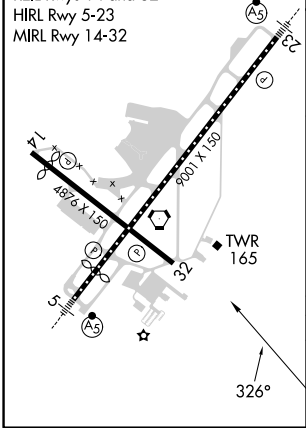
<p>Visibility reduction by helicopters NA.</p>	<p>MISSED APPROACH: Climbing right turn to 2000 via ORF R-041 to JIMMY Int/11.8 DME and hold.</p>			
--	---	--	--	--

ATIS 127.15	NORFOLK APP CON 118.9 353.7	NORFOLK TOWER 120.8 257.8	GND CON 121.9	CLNC DEL 118.5
-----------------------	---------------------------------------	-------------------------------------	-------------------------	--------------------------



RADAR REQUIRED

ELEV 26	D	TDZE 25
---------	----------	---------



CATEGORY	A	B	C	D
S-32	460-1	435 (500-1)	460-1¼ 435 (500-1¼)	460-1½ 435 (500-1½)
C CIRCLING	480-1 454 (500-1)	540-1 514 (600-1)	540-1½ 514 (600-1½)	900-2¾ 874 (900-2¾)

NE-3, 07 SEP 2023 to 05 OCT 2023

NE-3, 07 SEP 2023 to 05 OCT 2023