

(TOLLZ1.TOLLZ) 21168

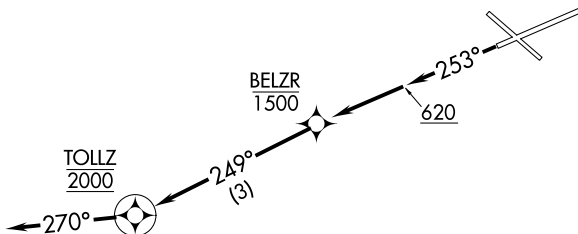
AL-305 (FAA)

EXEC (ORL)
ORLANDO, FLORIDA

TOLLZ ONE DEPARTURE (RNAV)

**TOP ALTITUDE:
2000**

ATIS
127.25
CLNC DEL
128.45
GND CON
121.4 239.0
EXECUTIVE TOWER ★
118.7 239.0
ORLANDO DEP CON
119.4 351.9



NOTE: DME/DME/IRU or GPS required.
NOTE: RADAR required.
NOTE: RNAV 1.

TAKEOFF MINIMUMS

Rwy 25: Standard with minimum climb of 500' per NM to 620.

NOTE: Chart not to scale.



DEPARTURE ROUTE DESCRIPTION

TAKEOFF RUNWAY 25: Climb on heading 253° to 620, then direct to cross BELZR at or below 1500, then on track 249° to cross TOLLZ at 2000, thence. . . .

. . . .on heading 270° or as assigned by ATC. Expect clearance to filed altitude within 10 minutes after departure.

TOLLZ ONE DEPARTURE (RNAV)
(TOLLZ1.TOLLZ) 22APR21

ORLANDO, FLORIDA
EXEC (ORL)

SE-3, 07 SEP 2023 to 05 OCT 2023

SE-3, 07 SEP 2023 to 05 OCT 2023