

# HI-ILS or LOC Y RWY 12

LOC I-MUO <b>110.3</b>	APCH CRS <b>122°</b>	Rwy Idg <b>13,510</b> TDZE <b>2987</b> Arprt Elev <b>2996</b>
---------------------------	-------------------------	---------------------------------------------------------------------

JAL-323 [USAF]

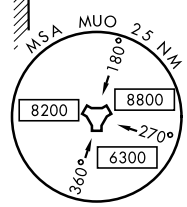
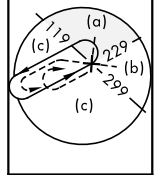
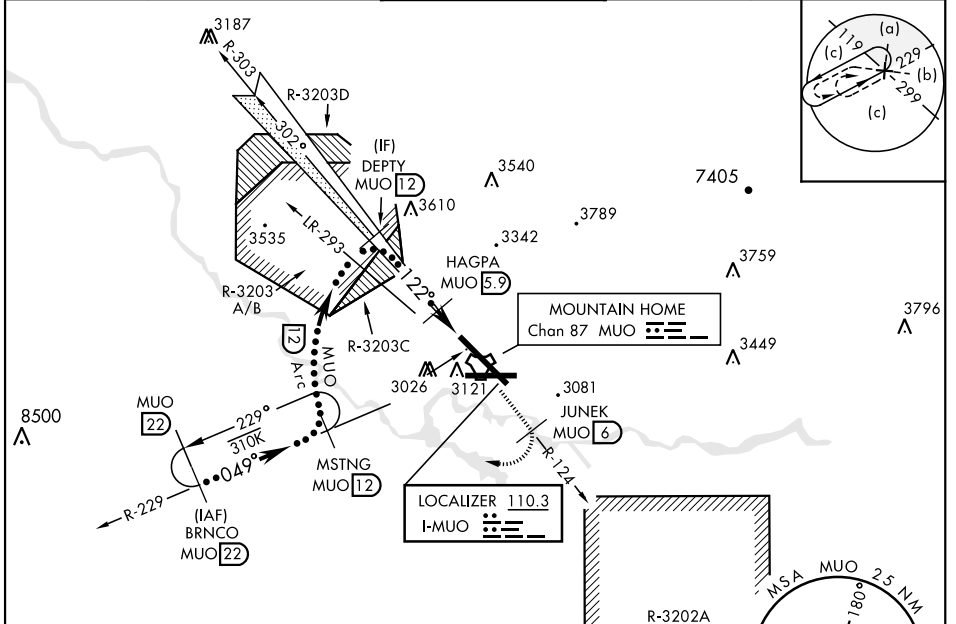
MOUNTAIN HOME AFB (KMUO)

▼ \* When ALS inop, increase CAT CDE RVR to 40 and vis to 3/4 mile.  
 \*\* When ALS inop, increase CAT CDE vis to 1 1/2 miles.  
 \*\*\* Circling NA NE of Rwy 12-30.



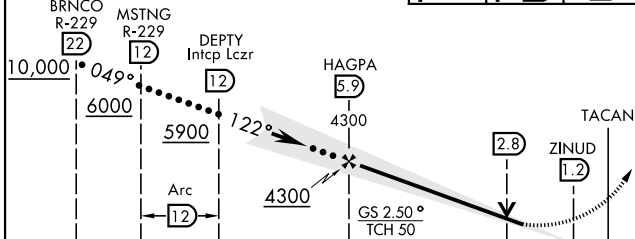
MISSED APPROACH: Climb to 10,000 via MUO R-124 to JUNEK/6 DME, turn right and intercept MUO R-229 to MSTNG/12 DME and hold. Continue climb in hold to 10,000.

ATIS <b>273.5</b>	MOUNTAIN HOME APP CON <b>124.8 259.1</b>	MOUNTAIN HOME TOWER <b>133.85 253.5</b>	GND CON <b>120.5 275.8</b>	CLNC DEL <b>127.1 290.425</b>
----------------------	---------------------------------------------	--------------------------------------------	-------------------------------	----------------------------------

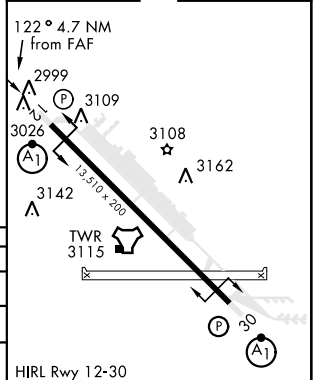


**RADAR or DME REQUIRED**  
EMERG SAFE ALT 100 NM 14,200

VGS and ILS glidepath not coincident (VGS Angle 2.50/TCH 41).  
 10,000 MUO R-124  
 JUNEK MUO 6  
 MSTNG MUO R-229



ELEV 2996	TDZE 2987
-----------	-----------



CATEGORY	C	D	E
S-ILS 12 *	3190/24	203	(200-1/2)
S-LOC 12 **	3460/50	473	(500-1)
CIRCLING ***	3560-1 1/2 564 (600-1 1/2)	3560-2 564 (600-2)	3700-2 1/2 704 (800-2 1/2)

HIRL Rwy 12-30

# HI-ILS or LOC Y RWY 12

NW-1, 07 SEP 2023 to 05 OCT 2023

NW-1, 07 SEP 2023 to 05 OCT 2023