

# HI-ILS or LOC Y RWY 30

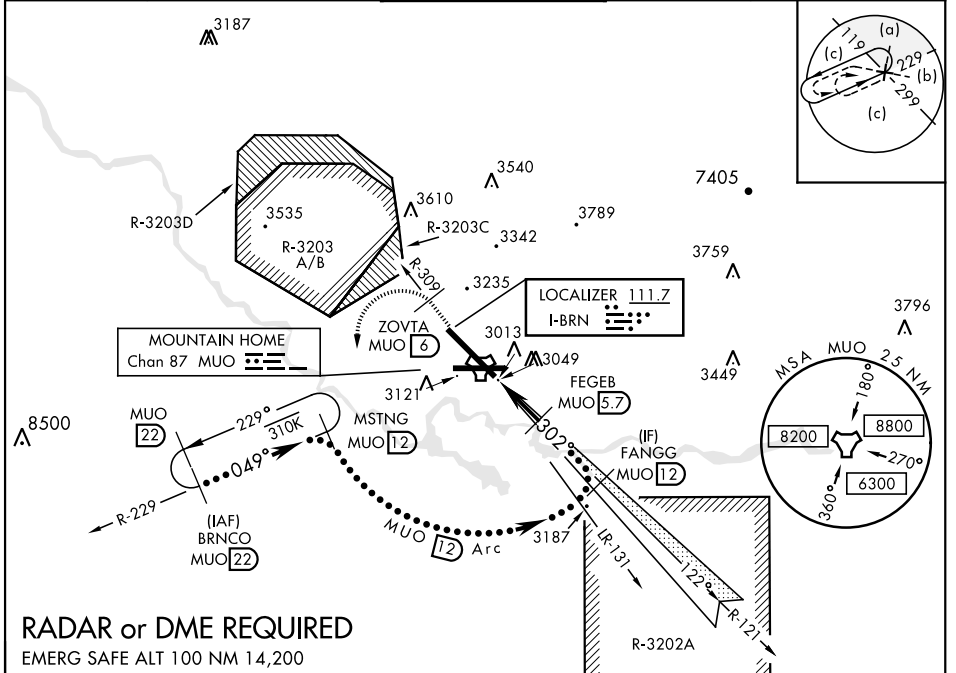
LOC I-BRN <b>111.7</b>	APCH CRS <b>302°</b>	Rwy Idg <b>13,510</b> TDZE <b>2996</b> Arpt Elev <b>2996</b>	JAL-323 [USAF]	MOUNTAIN HOME AFB (KMUO)
---------------------------	-------------------------	--	----------------	--------------------------

▼ \* When ALS inop, increase CAT CDE RVR to 47 and vis to 1 mile.  
 \*\* When ALS inop, increase CAT CDE vis to 1 1/2 miles.  
 \*\*\* Circling NA NE of Rwy 12-30.

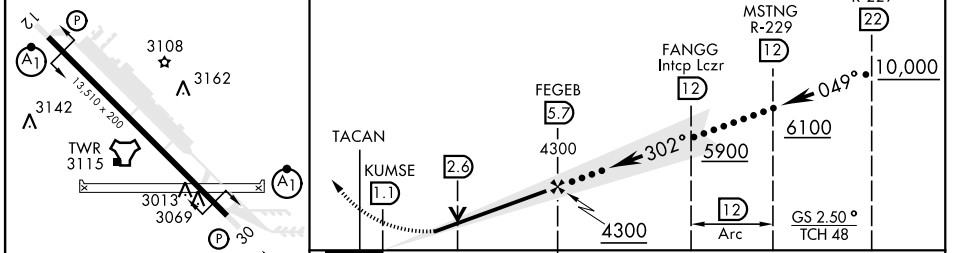
ALSF-1  

 MISSED APPROACH: Climb to 10,000 via MUO R-309 to ZOVTA/6 DME, turn left and intcp MUO R-229 to MSTNG/12 DME and hold. Continue climb in hold to 10,000.

ATIS <b>273.5</b>	MOUNTAIN HOME APP CON <b>124.8 259.1</b>	MOUNTAIN HOME TOWER <b>133.85 253.5</b>	GND CON <b>120.5 275.8</b>	CLNC DEL <b>127.1 290.425</b>
----------------------	---	--	-------------------------------	----------------------------------



ELEV 2996	TDZE 2996	10,000 MUO R-309	ZOVTA MUO 6	MUO R-229	MSTNG MUO R-229	VGSI and ILS glidepath not coincident (VGSI Angle 2.50/TCH 40).
-----------	-----------	---------------------	----------------	-----------	--------------------	--



CATEGORY	C	D	E
S-ILS 30 *	3246/40	250 (300-3/4)	
S-LOC 30 **	3460/50	464 (500-1)	
*** C CIRCLING	3560-1 1/2 564 (600-1 1/2)	3560-2 564 (600-2)	3700-2 1/2 704 (800-2 1/2)

# HI-ILS or LOC Y RWY 30

NW-1, 07 SEP 2023 to 05 OCT 2023

NW-1, 07 SEP 2023 to 05 OCT 2023