

MOUNTAIN HOME, IDAHO

# TACAN Z RWY 30

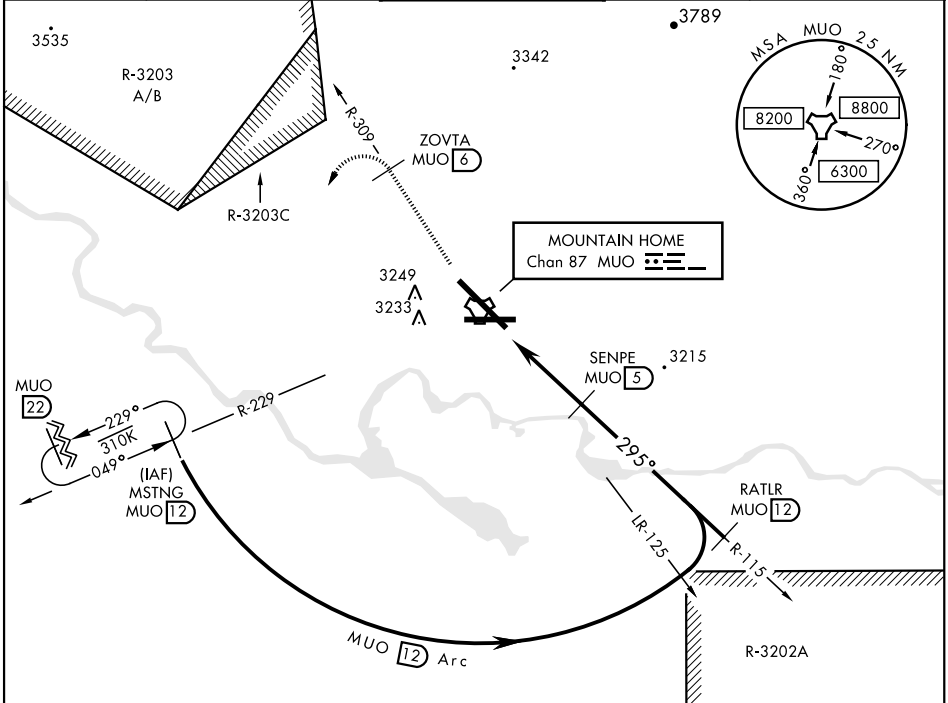
MOUNTAIN HOME AFB (KMUO)

TACAN MUO Chan 87	APCH CRS 295°	Rwy Idg 13,510 TDZE 2996 Arprt Elev 2996
----------------------	------------------	--

AL-323 [USAF]

<p>▼ * When ALS inop, increase CAT AB RVR to 55 and vis to 1 mile, CAT CDE vis to 1½ miles. ** Circling NA NE of Rwy 12-30.</p>	<p>ALSF-1 (A1)</p>	<p>MISSED APPROACH: Climb to 10,000 via MUO R-309 to ZOVTA/6 DME, turn left and intercept MUO R-229 to MSTNG/12 DME and hold. Continue climb in hold to 10,000.</p>
---	------------------------	---

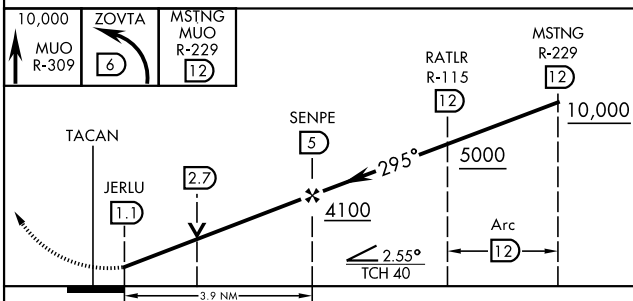
ATIS 273.5	MOUNTAIN HOME APP CON 124.8 259.1	MOUNTAIN HOME TOWER 133.85 253.5	GND CON 120.5 275.8	CLNC DEL 127.1 290.425
---------------	--------------------------------------	-------------------------------------	------------------------	---------------------------



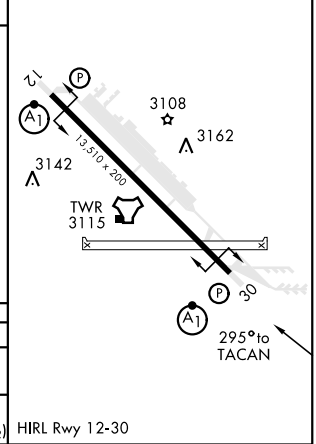
NW-1, 07 SEP 2023 to 05 OCT 2023

NW-1, 07 SEP 2023 to 05 OCT 2023

EMERG SAFE ALT 100 NM 14,200



ELEV 2996	TDZE 2996
-----------	-----------



CATEGORY	A	B	C	D	E
S-30 *	3480/24 484 (500-½)		3480/50 484 (500-1)		
CIRCLING **	3520-1 524 (600-1)	3560-1 564 (600-1)	3560-1½ 564 (600-1½)	3560-2 564 (600-2)	3700-2½ 704 (800-2½)

HIRL Rwy 12-30

MOUNTAIN HOME, IDAHO

43°03'N-115°52'W

MOUNTAIN HOME AFB (KMUO)

Amdt 3 17AUG17

# TACAN Z RWY 30