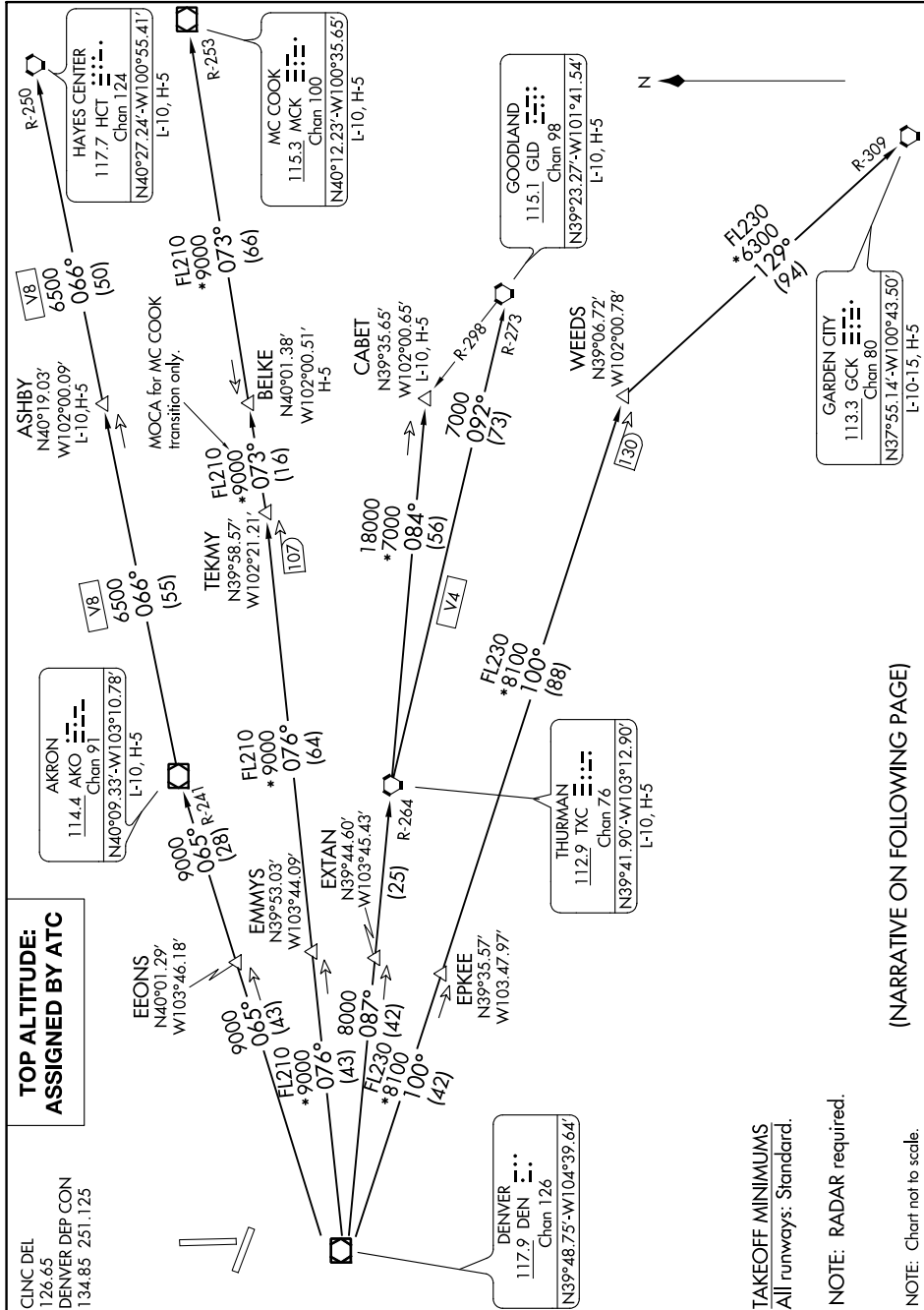


PLAINS ONE DEPARTURE

AL-325 (FAA)

GREELEY-WELD COUNTY (GXY)
GREELEY, COLORADO

SW-1, 07 SEP 2023 to 05 OCT 2023



TOP ALTITUDE: ASSIGNED BY ATC

CINC DEL
126.65
DENVER DEP CON
134.85 251.125

TAKEOFF MINIMUMS
All runways: Standard.

NOTE: RADAR required.

NOTE: Chart not to scale.

(NARRATIVE ON FOLLOWING PAGE)

SW-1, 07 SEP 2023 to 05 OCT 2023

PLAINS ONE DEPARTURE

GREELEY, COLORADO
GREELEY-WELD COUNTY (GXY)