

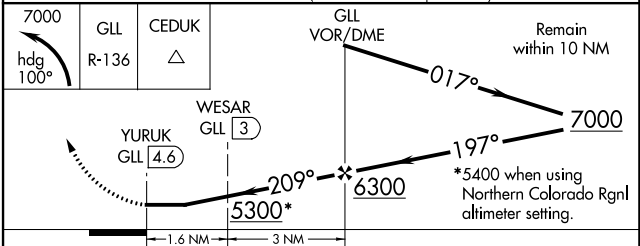
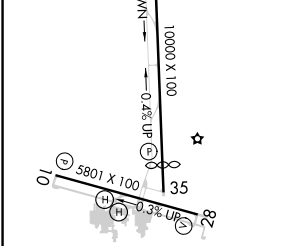
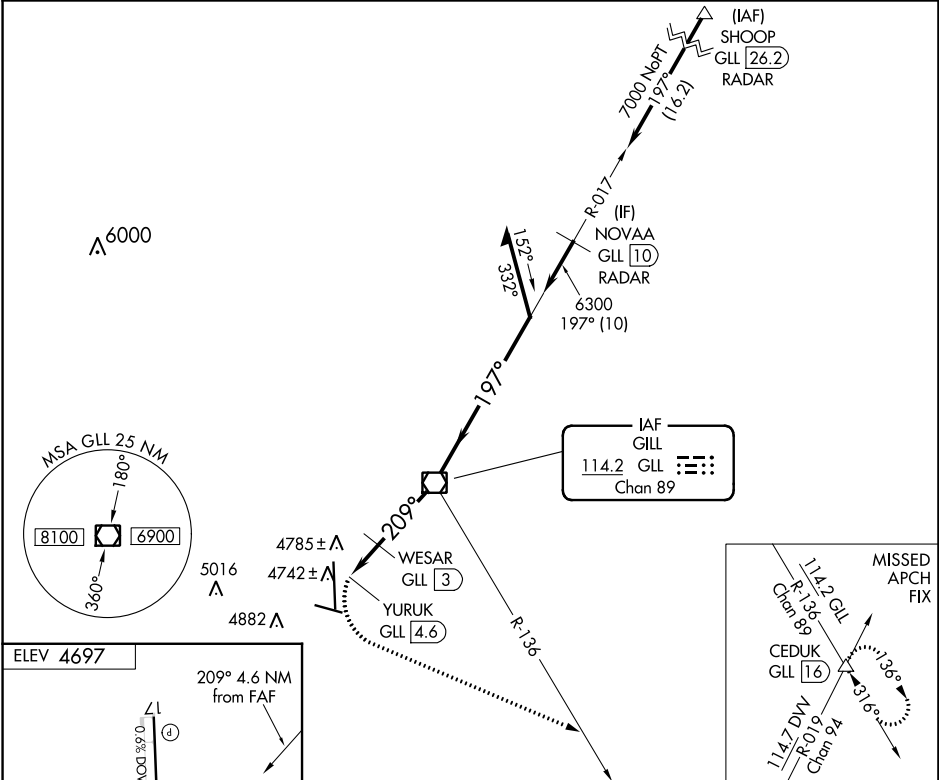
VOR/DME GLL <b>114.2</b> Chan <b>89</b>	APP CRS <b>209°</b>	Rwy Idg TDZE Apt Elev <b>4697</b>	<b>N/A</b> <b>N/A</b> <b>4697</b>
---	------------------------	--	---

**VOR-A**  
GREELEY-WELD COUNTY (GXY)

**⚠** When local altimeter setting not received, use Northern Colorado Rgnl altimeter setting and increase all MDA 100 feet and visibility Cat C/D and WESAR fix minimums Cat C/D visibility ¼ SM. DME required.

MISSED APPROACH: Climbing left turn to 7000 on heading 100° and GLL VOR/DME R-136 to CEDUK INT/GLL 16 DME and hold.

AWOS-3PT <b>135,175</b>	DENVER APP CON <b>134.85 251.125</b>	CLNC DEL <b>126.65</b>	UNICOM <b>122.8 (CTAF)</b>
----------------------------	---	---------------------------	-------------------------------



REIL Rwys 10, 28, 17 and 35	MIRL Rwys 10-28 and 17-35	FAF to MAP 4.6 NM	Knots					
			60	90	120	150	180	
			Min:Sec	4:36	3:04	2:18	1:50	1:32
CATEGORY			A	B	C	D		
<b>C</b> CIRCLING	5300-1	603 (700-1)	5300-1¾	603 (700-1¾)	5380-2¼	683 (700-2¼)		
WESAR FIX MINIMUMS (DME REQUIRED)								
<b>C</b> CIRCLING	5120-1	423 (500-1)	5200-1	503 (600-1)	5200-1½	503 (600-1½)	5380-2¼	
683 (700-2¼)								

SW-1, 07 SEP 2023 to 05 OCT 2023

SW-1, 07 SEP 2023 to 05 OCT 2023