

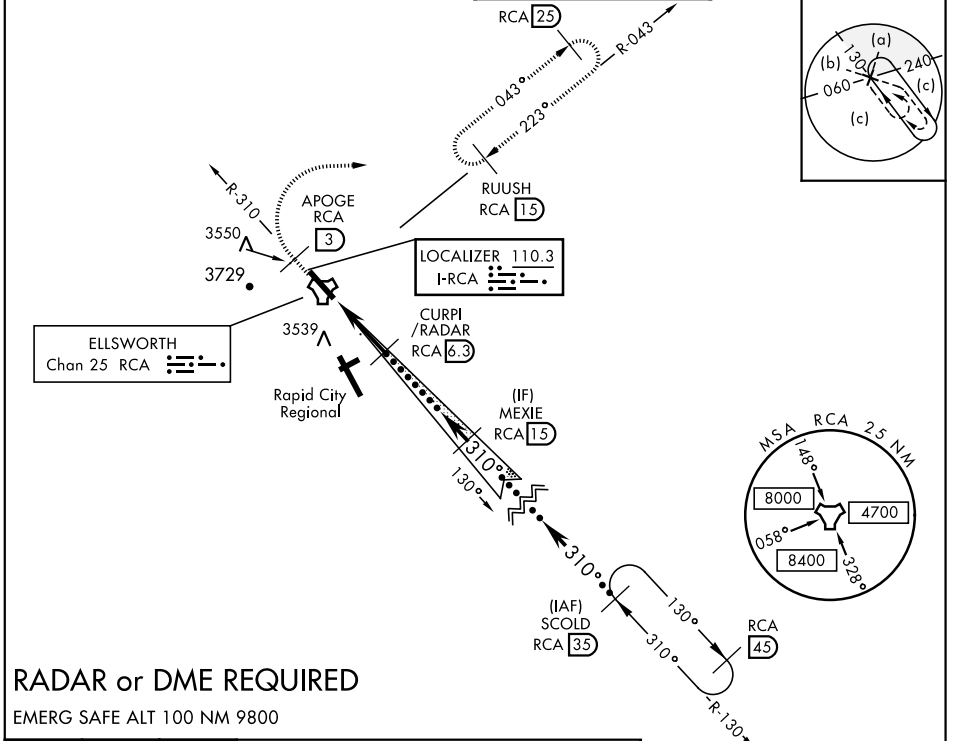
# HI-ILS or LOC Z RWY 31

LOC I-RCA <b>110.3</b>	APCH CRS <b>310°</b>	Rwy ldg <b>13,497</b> TDZE <b>3192</b> Arprt Elev <b>3276</b>	JAL-343 [USAF]	ELLSWORTH AFB (KRCA)
---------------------------	-------------------------	---	----------------	----------------------

**▼** \* When ALS inop, increase RVR to 40, vis to ¼ mile.  
 \*\* When ALS inop, increase vis to 1 ¾ miles.  
 \*\*\* CAT E circling restricted to 28th BW aircraft only; 28th BW aircraft will remain within Class D airspace.

**(A1)** ALSF-1 MISSED APPROACH: Track outbound RCA R-310 to 3 DME (APOGE), then turn right to join RCA R-043 to 15 DME (RUUSH) and hold. Maintain 6000.

ATIS ★ <b>120.625 269.9</b>	ELLSWORTH APP CON <b>119.5 259.1</b>	ELLSWORTH TOWER ★ <b>126.05 253.5</b>	GND CON <b>121.8 275.8</b>
--------------------------------	---	--	-------------------------------



**RADAR or DME REQUIRED**  
EMERG SAFE ALT 100 NM 9800

APOGE RCA R-310 (3)	6000 RCA R-043 (15)	RUUSH RCA (15)	VGSI and ILS glidepath not coincident (VGSI Angle 3.00 TCH 70).	SCOLD (35)	ELEV 3276	TDZE 3192
† LOC Only TACAN OPOGE (1.3) CURPI/RADAR (6.3) Intcp Lczr MEXIE (15) 5000 6000 GS 3.00° TCH 54 FL180				310° 5.5 NM from FAF HIRL Rwy 13-31 FAF to MAP 5.0 NM 3348 TWR 0.7% UP 13.422 x 300 31°		
CATEGORY	C	D	E			
S-ILS 31*	3392/24	200 (200-½)				
S-LOC 31**	3800-1 ¾	608 (600-1 ¾)				
CIRCLING ***	3880-1 ¾ 604 (700-1 ¾)	3980-2 ¼ 704 (800-2 ¼)	4040-2 ¾ 764 (800-2 ¾)	Knots	120	140
				Min:Sec	2:30	2:09
					1:53	1:40
					1:30	

# HI-ILS or LOC Z RWY 31

NC-1, 07 SEP 2023 to 05 OCT 2023

NC-1, 07 SEP 2023 to 05 OCT 2023