

# HI-TACAN Z RWY 13

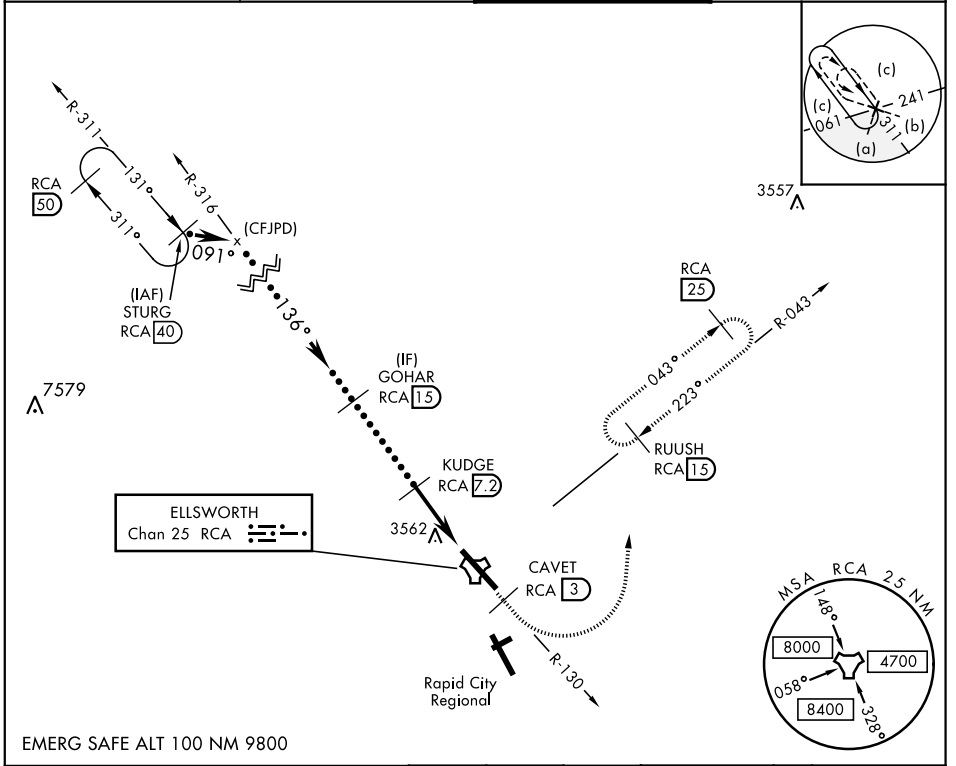
TACAN RCA Chan 25	APCH CRS 136°	Rwy ldg 13,497 TDZE 3276 Arprt Elev 3276	JAL-343 [USAF]	ELLSWORTH AFB (KRCA)
----------------------	------------------	--	----------------	----------------------

\* When ALS inop, increase CAT CDE vis to 1½ mile.  
 \*\* CAT E circling restricted to 28th BW aircraft only; 28th BW aircraft will remain within Class D airspace.

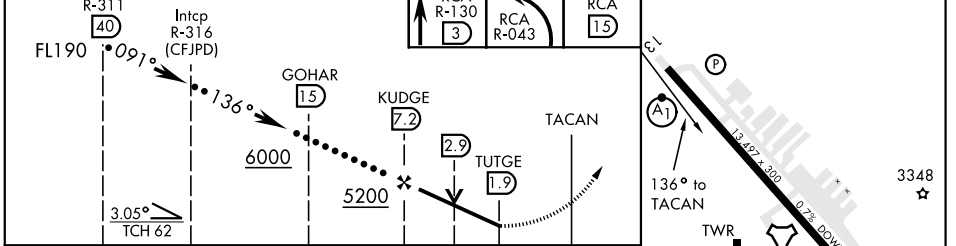


**MISSED APPROACH:** Track outbound RCA R-130 to 3 DME (CAVET), then turn left to join RCA R-043 to 15 DME (RUUSH) and hold. Maintain 6000.

ATIS * <b>120.625 269.9</b>	ELLSWORTH APP CON <b>119.5 259.1</b>	ELLSWORTH TOWER * <b>126.05 253.5</b>	GND CON <b>121.8 275.8</b>
--------------------------------	---	--	-------------------------------



EMERG SAFE ALT 100 NM 9800



	ELEV 3276	TDZE 3276	
CATEGORY	C	D	E
S-13 *	3820/60	544 (600-1½)	
CIRCLING **	3880-1¾ 604 (700-1¾)	3980-2¼ 704 (800-2¼)	4040-2¾ 764 (800-2¾)

RAPID CITY, SOUTH DAKOTA 44°09'N-103°06'W ELLSWORTH AFB (KRCA)

# HI-TACAN Z RWY 13

NC-1, 07 SEP 2023 to 05 OCT 2023

NC-1, 07 SEP 2023 to 05 OCT 2023

