

HI-TACAN Z RWY 31

TACAN RCA
Chan **25**

APCH CRS
302°

Rwy ldg **13,497**
TDZE **3192**
Arprt Elev **3276**

JAL-343 [USAF]

ELLSWORTH AFB (KRCA)

▲ * When ALS inop, increase CAT CDE vis to 1 3/4 mile.
** CAT E circling restricted to 28th BW aircraft only; 28th BW aircraft will remain within Class D airspace.



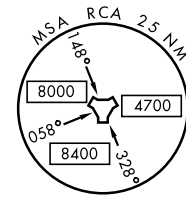
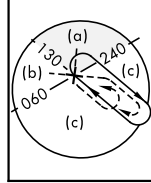
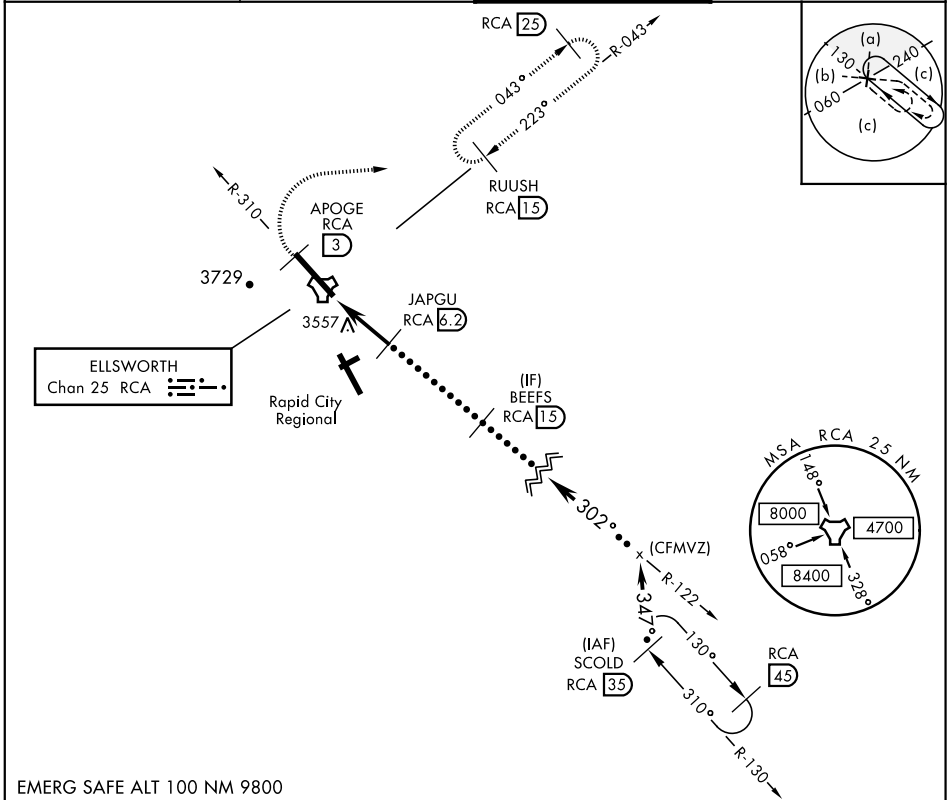
MISSSED APPROACH: Track outbound RCA R-310 to 3 DME (APOGE), then turn right to join RCA R-043 to 15 DME (RUUSH) and hold. Maintain 6000.

ATIS ★
120.625 269.9

ELLSWORTH APP CON
119.5 259.1

ELLSWORTH TOWER ★
126.05 253.5

GND CON
121.8 275.8



EMERG SAFE ALT 100 NM 9800

APOGE RCA R-310 (3)	6000	RUUSH RCA (15)	SCOLD R-130 (35)	ELEV 3276	TDZE 3192
TACAN	YODO (1.3)	JAPGU (6.2)	BEEFS (15)	Intrcp R-122 (CFMVZ)	FL180
CATEGORY	C		D		E
S-31*	3820-1 1/8		628	(600-1 1/8)	
CIRCLING**	3880-1 7/8 604 (700-1 7/8)	3980-2 1/4 704 (800-2 1/4)	4040-2 3/4 764 (800-2 3/4)		

RAPID CITY, SOUTH DAKOTA
Amdt 1 15SEP16

44°09'N-103°06'W

ELLSWORTH AFB (KRCA)

HI-TACAN Z RWY 31

NC-1, 07 SEP 2023 to 05 OCT 2023

NC-1, 07 SEP 2023 to 05 OCT 2023