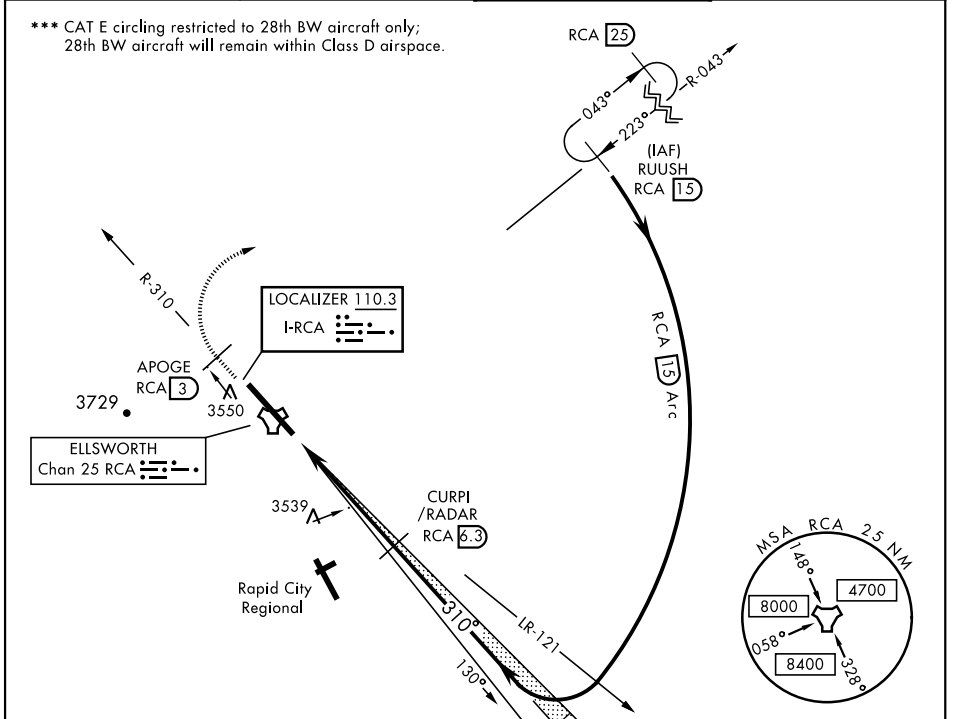


ILS or LOC Y RWY 31

LOC I-RCA 110.3	APCH CRS 310°	Rwy ldg 13,497 TDZE 3192 Arprt Elev 3276	AL-343 [USAF]	ELLSWORTH AFB (KRCA)
---------------------------	-------------------------	---	---------------	----------------------

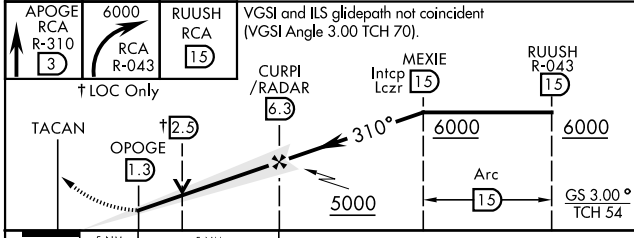
▼ * When ALS inop, increase RVR to 40 and vis to 3/4 mile.
****** When ALS inop, increase CAT AB RVR to 55 and vis to 1 mile, CAT CDE vis to 1 3/4 miles.

ATIS * 120.625 269.9	ELLSWORTH APP CON 119.5 259.1	ELLSWORTH TOWER * 126.05 253.5	GND CON 121.8 275.8
--------------------------------	---	--	-------------------------------

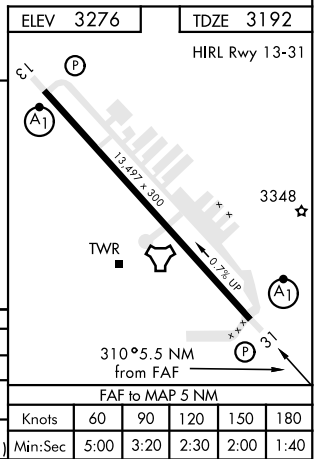


RADAR or DME REQUIRED

EMERG SAFE ALT 100 NM 9800



↑ APOGE RCA R-310 (3)	6000	RUUSH RCA (15)	VGSI and ILS glidepath not coincident (VGSI Angle 3.00 TCH 70).		
↑ LOC Only			CURPI/RADAR (6.3)	Intcp Lczt (15)	RUUSH R-043 (15)
TACAN	OPOGE (1.3)	↑ (2.5)	310°	6000	6000
.5 NM		.5 NM		Arc (15)	GS 3.00° TCH 54
CATEGORY	A	B	C	D	E
S-ILS 31*	3392/24		200	(200-1/2)	
S-LOC 31**	3800/24	608 (600-1/2)	3800-1 3/8	608	(600-1 3/8)
⊙ CIRCLING	3860-1 584 (600-1)	3880-1 604 (700-1)	3880-1 3/4 604 (700-1 3/4)	3980-2 1/4 704 (800-2 1/4)	4040-2 3/4 764 (800-2 3/4)



ILS or LOC Y RWY 31

NC-1, 07 SEP 2023 to 05 OCT 2023

NC-1, 07 SEP 2023 to 05 OCT 2023