

RAPID CITY, SOUTH DAKOTA

TACAN-A

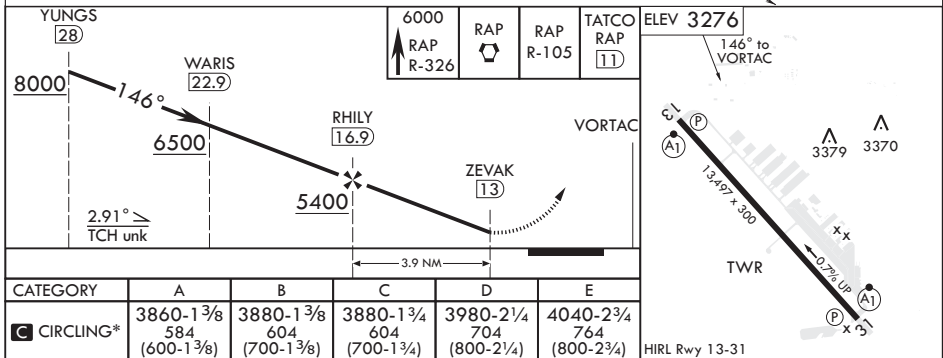
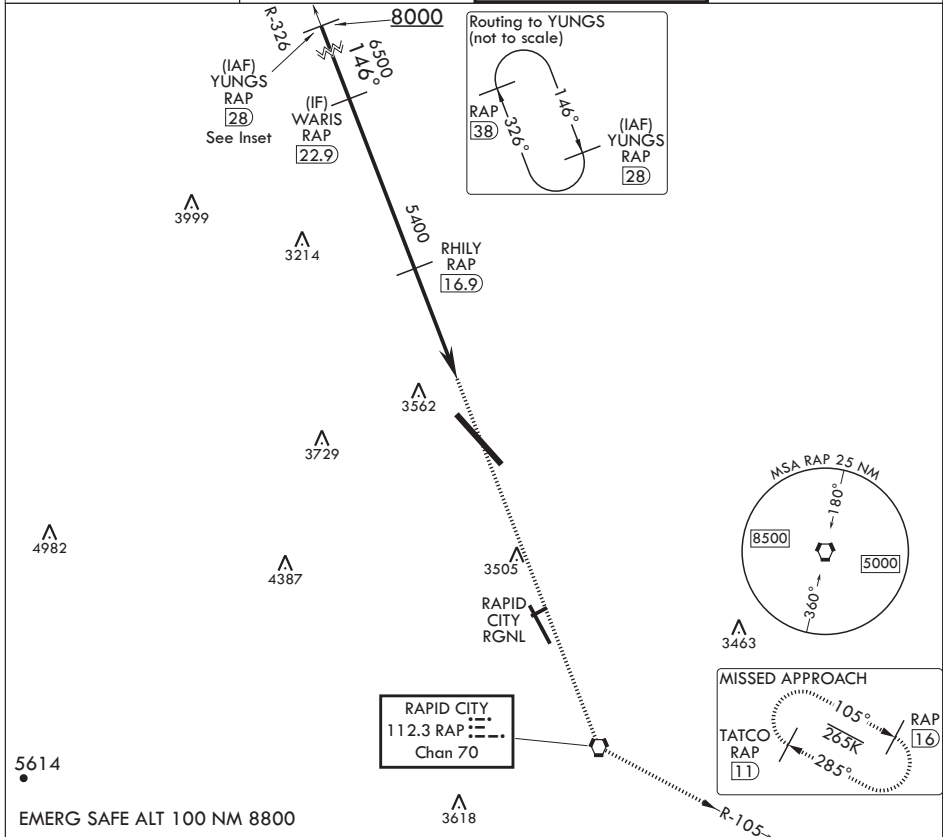
VORTAC RAP 112.3 Chan 70	APCH CRS 146°	Rwy Idg TDZE Arprt Elev N/A N/A 3276
--------------------------------	------------------	---

AL-343 (USAF)

ELLSWORTH AFB (KRCA)

⚠ * CAT E circling restricted to 28th BW aircraft only; 28th BW aircraft will remain within Class D airspace.

ATIS* 120.625 269.9	APP CON 119.5 259.1	TOWER* 126.05 253.5	GND CON 121.8 275.8
------------------------	------------------------	------------------------	------------------------



RAPID CITY, SOUTH DAKOTA
Amdt 2 22JUN17

44°09'N - 103°06'W

ELLSWORTH AFB (KRCA)
TACAN-A

NC-1, 07 SEP 2023 to 05 OCT 2023

NC-1, 07 SEP 2023 to 05 OCT 2023