

ATIS 134.75 239.05
 CLNC DEL 127.775 268.7
 GND CON 121.75 335.8
 TOWER 127.65 253.5
 DEP CON ★ 133.5 306.975
 LOS ANGELES CENTER 132.5 284.7

RADAR required TRM transition

Rwy	Knots	60	120	180	240	300	360
* 32	V/V(fpm)	231	462	693	924	1155	1386
† 14	V/V(fpm)	334	668	1002	1336	1670	2004
† 32	V/V(fpm)	309	618	927	1236	1545	1854

Max 310 KIAS until passing DIAMD (JLI transition MAX 310 KIAS until passing JLI)

CAUTION: Parachute activity in vicinity of PDZ VORTAC 26 DME.

OCEANSIDE
 115.3 OCN
 Chan 100
 N33° 14.44'
 W117° 25.06'
 L-4, H-4

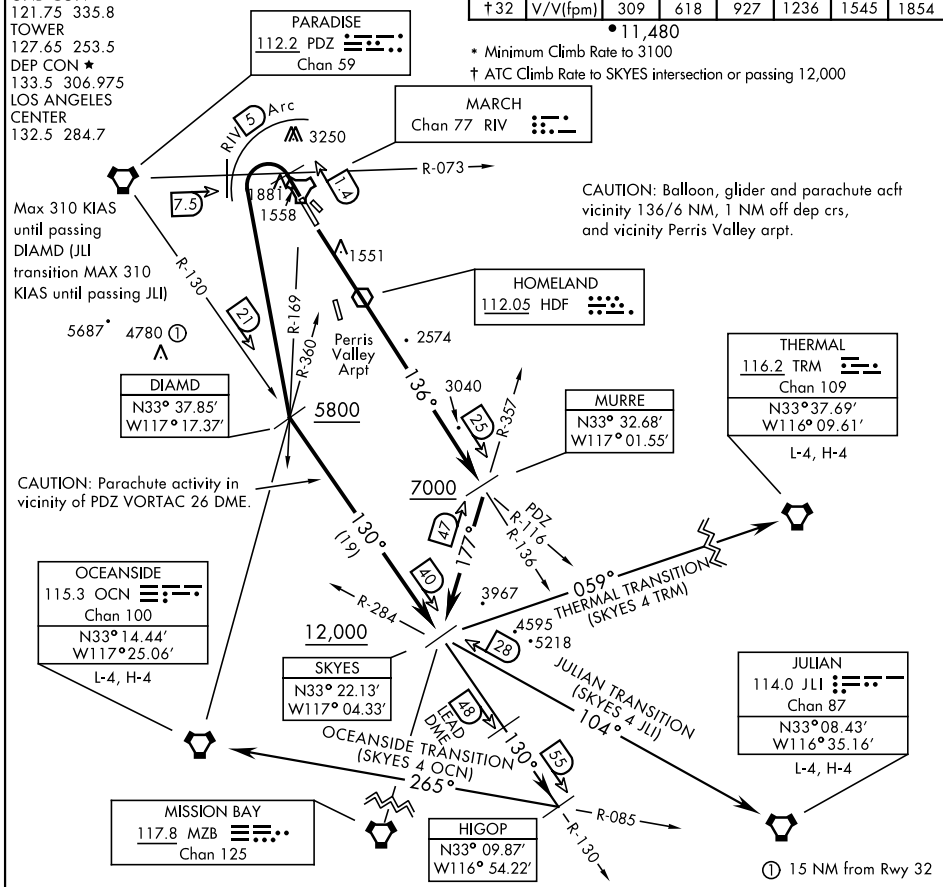
MISSION BAY
 117.8 MZB
 Chan 125

PARADISE
 112.2 PDZ
 Chan 59

MARCH
 Chan 77 RIV

CAUTION: Balloon, glider and parachute acft vicinity 136/6 NM, 1 NM off dep crs, and vicinity Perris Valley arpt.

• 11,480
 * Minimum Climb Rate to 3100
 † ATC Climb Rate to SKYES intersection or passing 12,000



DEPARTURE ROUTE DESCRIPTION

TAKEOFF RWY 14: Climb via RIV TACAN R-136 or climb direct HDF VOR, then via HDF R-136 to MURRE, intercept MZB VORTAC R-357 to SKYES, cross MURRE at or above 7000, and SKYES at or above 12,000. Thence via transition or assigned route.

TAKEOFF RWY 32: Climb on track 315°, then turn left crossing PDZ VORTAC R-073/RIV TACAN 1.4 DME direct DIAMD, proceed no closer than 7.5 DME PDZ. Remain within 5 DME RIV. Cross DIAMD at or above 5800. Intercept PDZ R-130 to SKYES, cross SKYES at or above 12,000. Thence via transition or assigned route.

JULIAN TRANSITION (SKYES 4 JLI): From over SKYES via JLI VORTAC R-284 direct JLI. MAX 310 KIAS until passing JULIAN VORTAC.

OCEANSIDE TRANSITION (SKYES 4 OCN): From over SKYES via PDZ VORTAC R-130 direct HIGOP, intercept OCN VORTAC R-085 direct OCN.

THERMAL TRANSITION (SKYES 4 TRM): From over SKYES track 059° to TRM. (Radar required)

SW-3, 07 SEP 2023 to 05 OCT 2023

SW-3, 07 SEP 2023 to 05 OCT 2023