

# VOR Y RWY 32

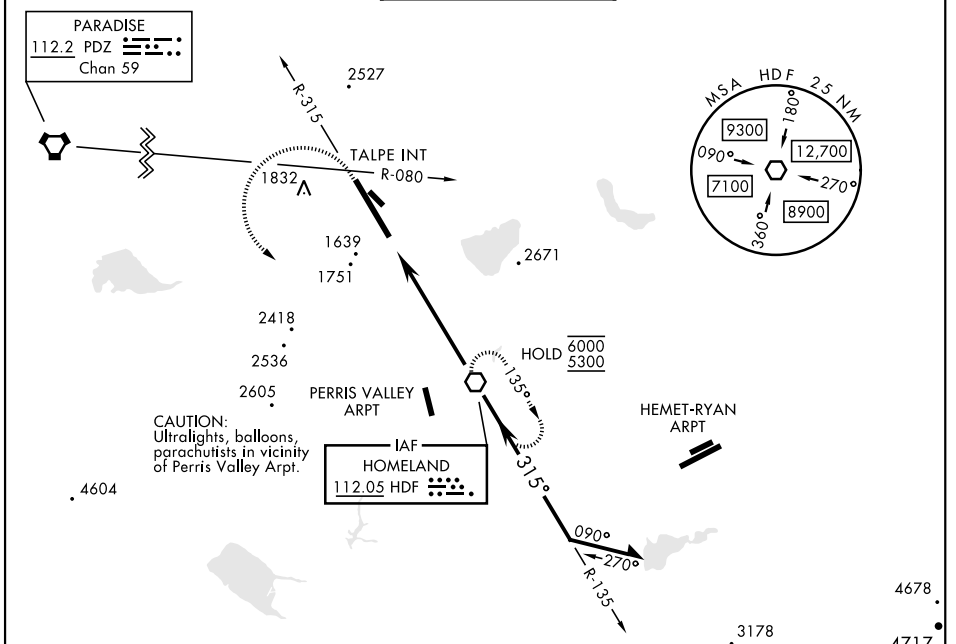
VOR HDF <b>112.05</b>	APCH CRS <b>315°</b>	Rwy ldg <b>13,302</b> TDZE <b>1497</b> Arpt Elev <b>1536</b>	AL-348 [USAF]	MARCH ARB (KRIV)
--------------------------	-------------------------	--	---------------	------------------

\*When ALS inop, increase CAT AB RVR to 60 and vis to 1 1/8 mile, CAT CDE vis to 1 1/8 miles.  
 \*\*Circling not authorized NE of Rwy 14-32. Rapid rising terrain.

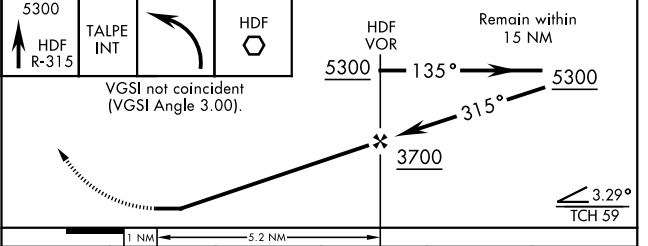
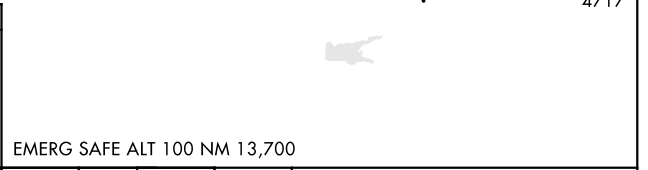
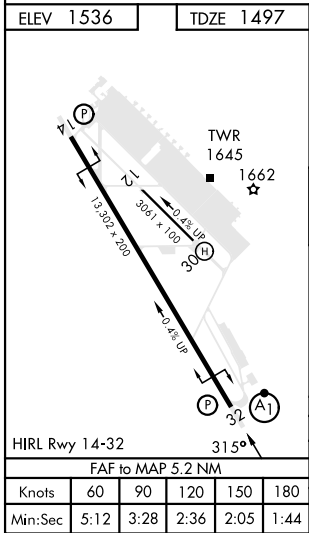


MISSED APPROACH: Climb to 5300 on HDF VOR R-315 to TALPE, then turn left direct HDF continue climb-in-hold to 5300.

ATIS <b>134.75 239.05</b>	APP/DEP CON ★ <b>133.5 306.975</b>	TOWER <b>127.65 253.5</b>	GND CON <b>121.75 335.8</b>	CLNC DEL <b>127.775 268.7</b>
------------------------------	---------------------------------------	------------------------------	--------------------------------	----------------------------------



CAUTION: Ultralights, balloons, parachutists in vicinity of Perris Valley Arpt.



CATEGORY	A	B	C	D	E
S-32 *	2040/40 543 (600-3/4)		2040/60	543	(600-1/8)
CIRCLING **	2180-1 1/8 644 (700-1 1/8)	2260-1 1/8 724 (800-1 1/8)	2300-2 1/4 764 (800-2 1/4)	2440-3 904 (1000-3)	2840-3 1304 (1400-3)

# VOR Y RWY 32

SW-3, 07 SEP 2023 to 05 OCT 2023

SW-3, 07 SEP 2023 to 05 OCT 2023