

LOC/DME I-MHR 111.35 Chan 50(Y)	APP CRS 221°	Rwy Idg 11301 TDZE 98 Apt Elev 98
----------------------------------------------	------------------------	--------------------------------------------------------------

ILS Y or LOC Y RWY 22L

SACRAMENTO MATHER (MHR)

TACAN required for procedure entry at BAB TACAN. For non-TACAN equipped aircraft, DME required.

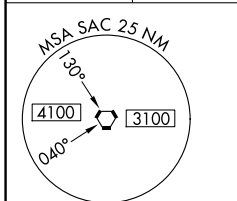
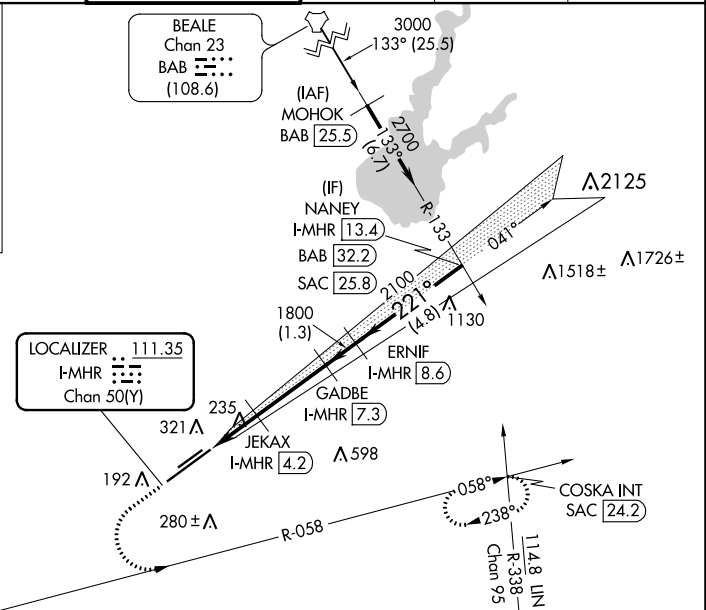
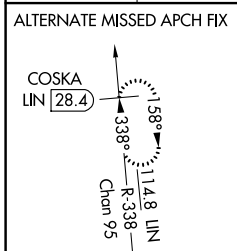
⚠ Circling NA northwest of Rwy 4R-22L. For inop ALS, increase S-ILS Cat E visibility to RVR 4000 and S-LOC Cat C/D/E visibility to RVR 6000.

⚠ *RVR 1800 authorized with use of FD or AP or HUD to DA. (NA when using Sacramento Exec altimeter setting).

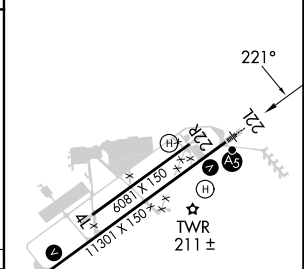
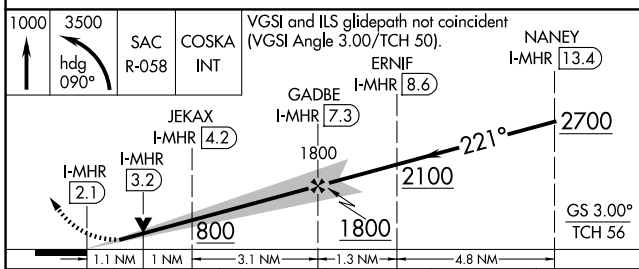
MALS R

MISSED APPROACH: Climb to 1000, then climbing left turn to 3500 on heading 090° and SAC VORTAC R-058 to COSKA INT/SAC 24.2 DME and hold, continue climb-in-hold to 3500.

ATIS 118.325	NORCAL APP CON 127.4 317.5	MATHER TOWER ★ 120.65 (CTAF) 0 282.25	GND CON 121.85 307.9	CLNC DEL 121.85 307.9	UNICOM 122.95
------------------------	--------------------------------------	-------------------------------------------------	--------------------------------	---------------------------------	-------------------------



ELEV 98	TDZE 98
---------	---------



CATEGORY	A	B	C	D	E
S-ILS 22L	298/24		200 (200-½)		
S-LOC 22L	500/24	402 (500-½)	500/40 402 (500-¾)		
CIRCLING	560-1	462 (500-1)	600-1½ 502 (600-1½)	800-2¼ 702 (800-2¼)	800-2½ 702 (800-2½)

MIRL Rwy 4L-22R
HIRL Rwy 4R-22L

SW-2, 07 SEP 2023 to 05 OCT 2023

SW-2, 07 SEP 2023 to 05 OCT 2023