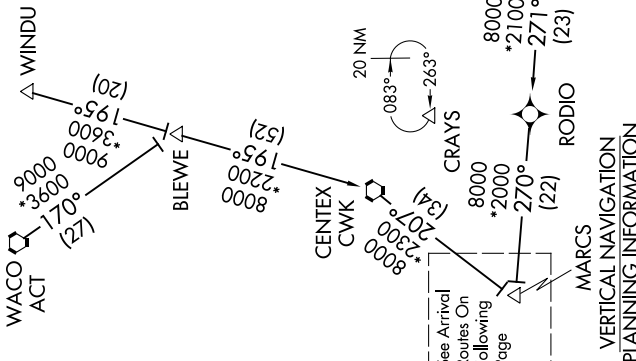


BRAUN THREE ARRIVAL (RNAV) Transition Routes

SAN ANTONIO, TEXAS

SC-3, 07 SEP 2023 to 05 OCT 2023

- HUMBLE TRANSITION (IAH.BRAUN3)
- LUFKIN TRANSITION (LFK.BRAUN3)
- MOLLR TRANSITION (MOLLR.BRAUN3)
- WACO TRANSITION (ACT.BRAUN3)
- WALLIN TRANSITION (WALLIN.BRAUN3)
- WINDU TRANSITION (WINDU.BRAUN3)



See Arrival Routes On Following Page

MARCS VERTICAL NAVIGATION PLANNING INFORMATION

Turbojets: Expect 13000

NOTE: RADAR required.  
 NOTE: RNAV 1.  
 NOTE: DME/DME/IRU or GPS required.  
 NOTE: WALLIN transition for Houston Terminal Area Departures only.

SAN ANTONIO APP CON  
 127.1 269.1  
 KRND ATIS\*  
 290.525  
 SAT D-ATIS  
 118.9  
 KSKF ATIS  
 120.45 273.5  
 SSF ATIS  
 128.8



(CONTINUED ON FOLLOWING PAGE)

NOTE: Chart not to scale

SC-3, 07 SEP 2023 to 05 OCT 2023

BRAUN THREE ARRIVAL (RNAV) Transition Routes

SAN ANTONIO, TEXAS