

# ILS or LOC/DME Y RWY 16

LOC I-SKF <b>110.1</b>	APCH CRS <b>158°</b>	Rwy Ildg <b>11,550</b> TDZE <b>690</b> Arprt Elev <b>690</b>
---------------------------	-------------------------	--

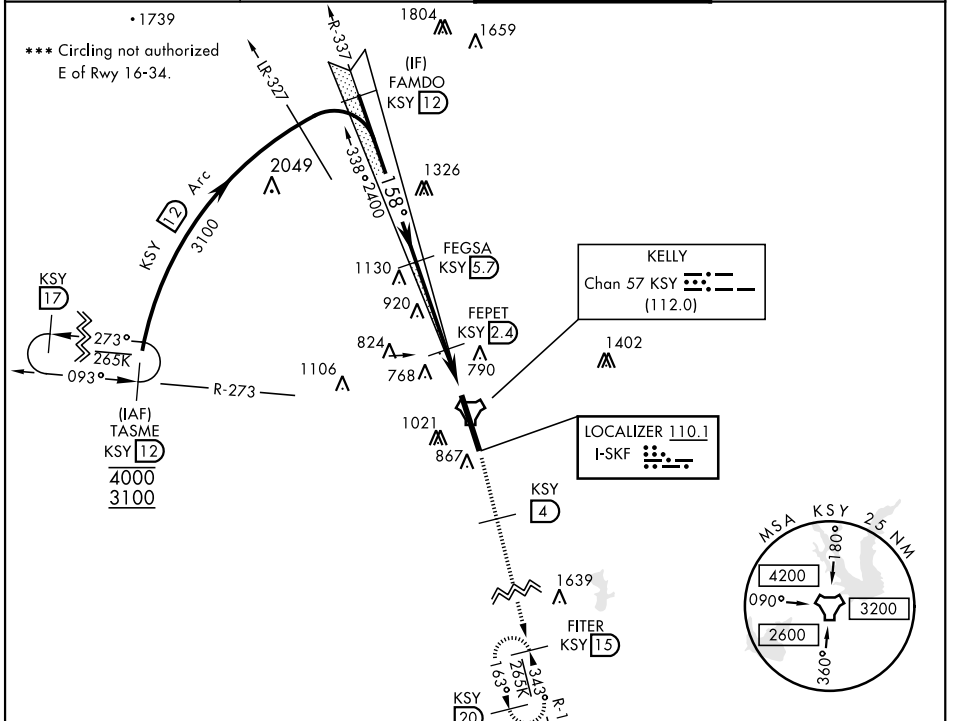
AL-371 [USAF]

KELLY FLD (KSKF)

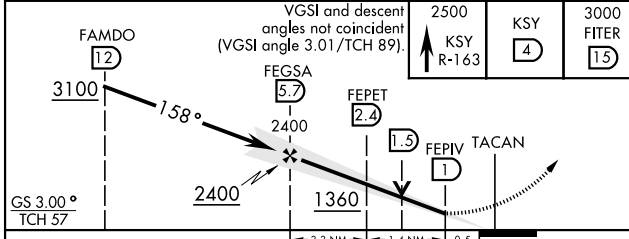
\*When ALS inop, increase RVR to 40 and vis to 3/4 mile.  
 \*\*When ALS inop, increase CAT AB RVR to 55 and vis to 1 mile, CAT CDE RVR to 60 and vis to 1 1/8 miles.

ALSF-1 MISSED APPROACH: Climb to 2500 via KSY R-163 until 4 DME, then continue climb to 3000 to FITER/1.5 DME and hold. Non-TACAN equipped aircraft expect alternate missed approach instructions.

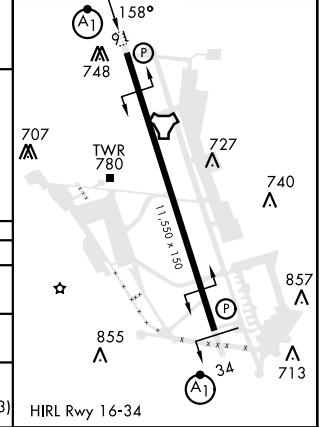
ATIS <b>120.45 273.5</b>	SAN ANTONIO APP CON <b>118.05 353.5</b>	TOWER <b>124.3 322.35</b>	GND CON <b>121.8 289.4</b>
-----------------------------	--	------------------------------	-------------------------------



EMERG SAFE ALT 100 NM 4200



ELEV 690	TDZE 690
----------	----------



CATEGORY	A	B	C	D	E
S-ILS 16*	890/24		200	(200-1/2)	
S-LOC/DME 16**	1080/24	390 (400-1/2)	1080/35	390	(400-5/8)
<b>C</b> CIRCLING ***	1200-1 510 (600-1)	1280-1 590 (600-1)	1340-1 3/4 650 (700-1 3/4)	1400-2 1/4 710 (800-2 1/4)	1900-3 1210 (1300-3)

# ILS or LOC/DME Y RWY 16

SC-3, 07 SEP 2023 to 05 OCT 2023

SC-3, 07 SEP 2023 to 05 OCT 2023