

SAN ANTONIO, TEXAS

# RNAV (GPS) RWY 16

WAAS CH 52296 W16A	APCH CRS 158°	Rwy ldg TDZE Arprt Elev	11,550 690 690
--------------------------	------------------	-------------------------------	----------------------

AL-371 (USAF)

KELLY FLD (KSKF)

RNP APCH * When ALS inop, increase RVR to 40, vis to 3/4 miles. ** When ALS inop, increase RVR to 60, vis to 1 1/8 miles.	ALS-1 	MISSED APPROACH: Climb to 1500 then climbing right turn to 3000 direct FITER and hold.
---	-----------	--

ATIS 120.45 273.5	SAN ANTONIO APP CON 118.05 353.5	KELLY TOWER 124.3 322.35	GND CON 121.8 289.4
----------------------	-------------------------------------	-----------------------------	------------------------

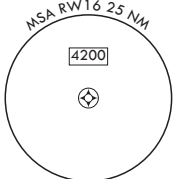
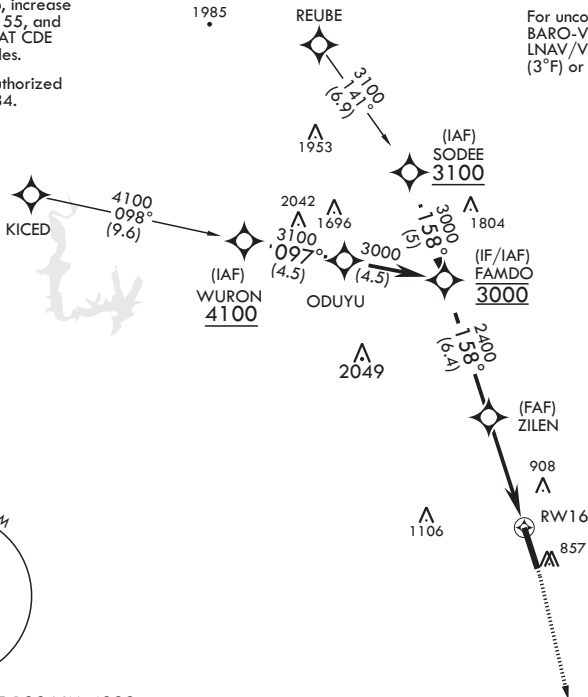
\*\*\* When ALS inop, increase CAT AB RVR to 55, and vis to 1 mile; CAT CDE vis to 1 7/8 miles.

\*\*\*\* Circling not authorized E of Rwy 16-34.

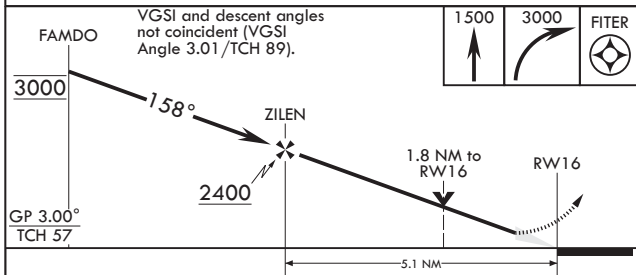
1985

REUBE

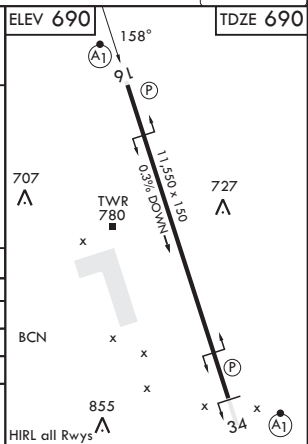
For uncompensated BARO-VNAV systems, LNAV/VNAV NA below -16°C (3°F) or above 54°C (129°F).



EMERG SAFE ALT 100 NM 4200



CATEGORY	A	B	C	D	E
LPV DA*	890/24		200	(200-½)	
LNAV/VNAV DA**	1080/35		390	(400-¾)	
LNAV MDA***	1360/24 670 (700-½)		1360-1½	670	(700-1½)
<b>C</b> CIRCLING****	1360-1 670 (700-1)		1360-1½ 670 (700-1½)	1400-2¼ 710 (800-2¼)	1900-3 1210 (1300-3)



SAN ANTONIO, TEXAS  
Amdt 2 23FEB23

29°23'N - 98°35'W

KELLY FLD (KSKF)

# RNAV (GPS) RWY 16

SC-3, 07 SEP 2023 to 05 OCT 2023

SC-3, 07 SEP 2023 to 05 OCT 2023