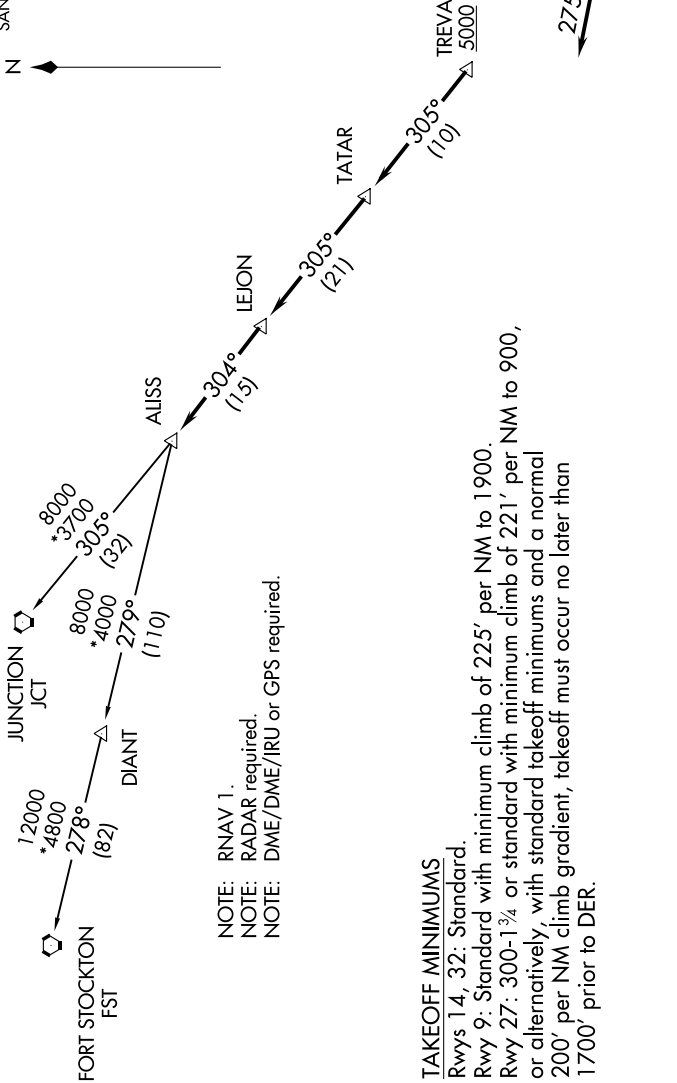


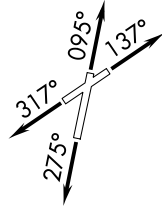
# ALISS FIVE DEPARTURE (RNAV)

ALISS  
 128.8  
 CLINC DEL (When twr closed)  
 121.7  
 GND CON  
 121.7 379.9  
 SAN ANTONIO DEP CON  
 125.7 290.225  
 STINSON TOWER★  
 118.2 379.9



NOTE: RNAV 1.  
 NOTE: RADAR required.  
 NOTE: DME/DME/IRU or GPS required.

**TAKEOFF MINIMUMS**  
 Rwy 14, 32: Standard.  
 Rwy 9: Standard with minimum climb of 225' per NM to 1900.  
 Rwy 27: 300-1 3/4 or standard with minimum climb of 221' per NM to 900, or alternatively, with standard takeoff minimums and a normal 200' per NM climb gradient, takeoff must occur no later than 1700' prior to DER.



NOTE: Chart not to scale.

(NARRATIVE ON FOLLOWING PAGE)

SC-3, 07 SEP 2023 to 05 OCT 2023