

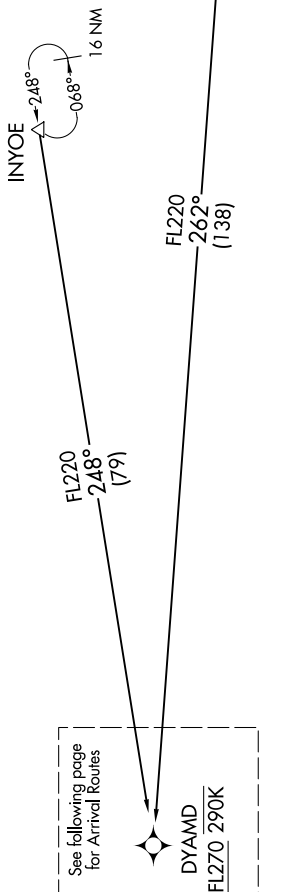
(DYAMD.DYAMD5) 19003

AL-375 (FAA)

SAN FRANCISCO INTL (SFO)  
SAN FRANCISCO, CALIFORNIA

# DYAMD FIVE ARRIVAL (RNAV) Transition Routes

OAKLAND CENTER  
134.37 281.5  
NORCAL APP CON  
128.325 254.3  
D-ATIS  
113.7 115.8 118.85  
SAN FRANCISCO TOWER  
120.5 269.1  
GND CON  
121.8



See following page  
for Arrival Routes

DYAMD  
FL270 290K

INYOE TRANSITION (INYOE.DYAMD5)  
RUSME TRANSITION (RUSME.DYAMD5)

- NOTE: RNAV 1.
- NOTE: DME/DME/IRU or GPS required.
- NOTE: Expect to receive "descend via" clearance from Oakland Center. Northern California TRACON will assign landing runway.
- NOTE: RADAR required for non-GPS equipped aircraft.

(CONTINUED ON FOLLOWING PAGE)

NOTE: Chart not to scale.